

Our District



Horsham
District
Council

News from Horsham District Council
July 2023

**Enjoy a summer
of fun activities**
.....

**Our Coronation
celebrations in pictures**
.....

**Climate action across
the District**
.....

 Follow us on Instagram @HorshamDC

 Find us on Facebook/HorshamDC



**Places
Leisure**

Part of Places for People

Because Community Matters

A place for you

Premium memberships on your doorstep



**The Pavilions
in the Park**



**Billingshurst
Leisure Centre**



**The Bridge
Leisure Centre**



**Steyning
Leisure Centre**

With our Premium membership you can benefit from



Unlimited
gym



Unlimited
swim*



Unlimited
classes



Add up to
4 juniors

About us

We're passionate about helping you stay physically active and emotionally engaged in fitness, sport and wellbeing. Our mission is to put our heart and soul into 'creating active places and healthy people' - it's about creating a place for everyone.

Our memberships

We have a wide range of memberships to suit every families specific needs. Whether you are looking for an activity to keep the kids entertained on a Sunday afternoon or wanting to start a new hobby for yourself. Search Places Leisure or scan the QR code to find your nearest centre and find out more.



Scan the QR code to find out more

*Swimming facilities available at The Pavilions in the Park, Billingshurst Leisure Centre and Steyning Leisure Centre

Places for People Leisure Ltd.
working in partnership with
Horsham District Council



**Horsham
District
Council**

Welcome to summer 2023



I am delighted to have been elected as the new Leader of the Council and to welcome you to this summer edition of our residents' magazine.

As we enjoy longer days and sunnier months there is so much to look forward to across our District.

In this edition we showcase free and low-cost summer activities for all and feature some of our great volunteering opportunities.

We celebrate our fascinating architectural heritage and look back at the historic scenes we created with community celebrations right across the District over the Coronation weekend.

Look out for our draft Climate Action Strategy, support for businesses on their way to becoming carbon neutral and some fantastic work with Wilder Horsham District, inspiring the next generation of climate heroes.

Finally, I want to say a big thank you to some of our readers. Following our spring article 'Enabling activities for everyone' Ewan, a former Horsham Wheels for ALL group attendee, and the family and friends of the late Mr Bill Dare, generously donated trikes for our inclusive cycling sessions. Mr Dare's daughter commented: "I'm so glad Dad's trike will be put to good use. I know he would be very happy."

I couldn't be more grateful to the fantastic individuals and communities that make Horsham District such a great place to live and work. It is a privilege to lead the Council and I look forward to ensuring the Council continues to deliver excellent services for the benefit of all residents and local businesses.

Leader of Council

Cllr Martin Boffey

Above: Ewan with his trike for Wheels for ALL

Below: Bill's trike for Wheels for ALL delivered by his friend Will



"I'm so glad Dad's trike will be put to good use"



Hurst Road Café adds extra youth services	2
Enjoy a summer of fun in Horsham District	3
Give a little time, get a lot back	4
Step back in time at Horsham Museum	5
Look out for our new Wellbeing Hub	6
Cost of living: here to help	7
Delivering more homes for local people	8
Managing your council accounts online	8
Celebrating our architectural heritage in Horsham District	10
Renovating and preserving local history	11
Historic scenes	12
Eager beavers help us to boost biodiversity	14
Leading the charge – getting you motoring with electricity	15
Community Climate Fund – supporting local projects	16
Share your views on our draft Climate Action Strategy	17
Boost your business or promote your event	18
Fall detector – helping mum keep her independence	19
Business support in Horsham District	20
Stress-free leasing and lettings	22
Make the most of new digital parking permits	22
Sussex's super recyclers	22
Get yourself a hot bin or a compost bin	22
Is it time for a clear out?	22
Horsham District Councillors	24
Contact us	25
We're hiring!	25

GET IN TOUCH



Send us your feedback on this edition by emailing us at communications@horsham.gov.uk

Cover image: Coronation celebrations in the Carfax, Horsham © TobyPhillipsPhotography.co.uk

@HorshamDC

Hurst Road Café adds extra youth services

The Hurst Café, open to young people aged 11 to 18, is located in the former Hurst Road Youth Centre near Horsham Town Centre. It is a great safe social space for young people to meet with friends.

The café facility run by 4TheYouth, boasts social areas with games and activities, including free WiFi, pool tables, consoles and plenty of sofas to sit and chat. There is a garden space which is great in warm weather.

The centre also runs a regular activity programme, a 'student night' for young people in school years 11 to 13 and a weekly club for young people with additional needs aged 13 to 18. The centre provides open access to youth workers who are available for young people to talk to confidentially and get advice and support on a variety of issues, including emotional wellbeing, relationships, school and homework.

Please follow @hurstcafe on Instagram and the 4TheYouth page on Facebook for up-to-date opening times and more information.



Above: the i-Rock Horsham District team

Below: Food and drink available at 4TheYouth's café



New i-Rock Horsham District service

Newly joining the facility this summer are i-Rock Horsham District, adding their fantastic service to complement the 4TheYouth offer. Providing 'no wrong door' access to support for young people, i-Rock Horsham District is commissioned and co-ordinated by Sussex Partnership NHS Foundation Trust.

i-Rock offer both virtual and face-to-face appointments as well as access to specialist services on site if needed. Sessions allow young people to discuss how they are feeling in a safe, relaxed and informal environment. There are lots of different people at i-Rock who can offer support and advice on a range of issues young people may be facing including emotional and mental health, jobs, education and housing.

FIND OUT MORE



You can find out more about the i-Rock offer including booking for virtual appointments, details of all their sites and opening times along with information on how to use the services at: www.sussexcamhs.nhs.uk/our-services/service-finder/i-rock.

These two organisations deliver a great partnership for our young people providing a fantastic social facility and ensuring good quality support is easy to access.

For more information on our services for children and young people, please visit: www.horsham.gov.uk/community/children-and-young-people.



Enjoy a summer of fun in Horsham District

With so much to experience locally, including many free activities – what will you discover?



Play all day

Find our 52 play areas at: www.horsham.gov.uk/playareas.

Enjoy park life in Horsham

We have a busy diary of summer events for everyone in Horsham Park, including children's shows, music and events – look out for Love Parks Week events on 29 and 30 July and activities on 26 and 27 August. For full details please visit: www.horsham.gov.uk/horshampark.

Get into tennis

Pay as you play or sign up for membership at our courts in Horsham Park. Look out for free taster tennis sessions for over 12s as part of the Tennis for Free initiative. For more information, please visit: www.horshamparktennis.com.

Roll into our skate parks and BMX tracks

There are several skate parks and BMX tracks across Horsham District. Find one near you at: www.horsham.gov.uk/parks.

   @HorshamDC



Go out and explore

With many walking routes there is so much to discover in Horsham District. Head to: www.horsham.gov.uk/walks where you will find a selection of walks for all abilities. See Horsham District's history first-hand with Horsham Museum & Art Gallery's self-guided heritage trails at: www.horshammuseum.org/heritagetrails. Or pick out one of our 44 circular cycling routes at: www.horsham.gov.uk/bikerides.

Strikeout at Junior Baseball

Sessions for children and young people aged 8-12 at The Holbrook Club are continuing into July. Find booking information at: www.horsham.gov.uk/sport-and-leisure/sports-sessions.

Be a nature detective at Warnham Local Nature Reserve

Explore the boardwalks and wildlife at the Reserve on The Discovery Trail. Younger visitors can earn a Junior Trail Detective Badge. Find out more at www.horsham.gov.uk/warnhamlnr.

Neighbourhood Family Funday

Join our Neighbourhood Wardens at the Chanctonbury Leisure Centre in Storrington for fun-fuelled activities including a remote climbing wall and sports from 11am to 3pm on 21 August.



Immerse yourself in local produce and artisan products

Take a tour of all our charming markets. Find full details of all the markets in Billingshurst, Horsham, Henfield and Steyning at: www.visithorsham.co.uk/category/markets.

Carfax Bandstand Performances

Don't miss our programme of local talent in Horsham Town Centre. Find the latest schedule at: www.horsham.gov.uk/community/events-in-horsham-town-centre.

Sample a high street safari

Get set to go on one of our free outdoor geogames. Use your smartphone and follow the QR codes around local towns experiencing an interactive family story trail. Find out more at: www.highstreetsafari.com.



Complete a Mystery Trail

Download your map from www.whistlestoparts.org/mysterytrails and complete the seven mystery trails across the District. Paper copies of the maps can be collected while stocks last from Horsham Museum & Art Gallery and Warnham Local Nature Reserve.

Give a little time, get a lot back

You might think that you don't have the time to volunteer but there are so many opportunities that could be a perfect fit for you. From developing skills and making new friends, to unlocking new opportunities, volunteering gives back a whole lot of benefits.

Something for you?

We have something for all types of availability. From regular roles to one off or ad hoc opportunities. You could be operating from home, in offices and museums, in the community or the great outdoors.

Here are just some current and recent opportunities on our website:

Get up close with animal friends as a dog walker for **Greyhound Protection West Sussex** or help facilitate trips with donkeys at **East Clayton Farm**.

Right: Tapestry Day Club guests enjoying lunch and good company

Below: Volunteer at Amberley Museum

“Volunteers are our backbone”

Get outdoors and offer your horticultural knowledge maintaining green spaces for **The Phoenix Stroke Club** or **Springboard's** inclusive centre.

Find opportunities in local museums and galleries or help with **Root and Branch Theatre**.

Support men's mental health by leading group walks.

CEO and Founder of **MenWalkTalk**

Matt Pollard said:

“Volunteers are our backbone. Without their commitment, we wouldn't be able to create a safe and supportive space for men.”

Tackle social isolation and host an annual tea party with **Re-engage**, restore someone's social confidence with **Horsham District Befriends** or offer regular sociable days for small groups at home for **Tapestry Day Club**.



As a **SECamb Community First Responder**, Sally (pictured above) makes a huge difference. She commented:

“By volunteering you could save a life with each call.”

Volunteers can help in many ways:

- Great befrienders can help reduce isolation and anxiety and aid social inclusion
- Quality admin support is essential to ensure incredible charities, organisations and services can function properly
- Trustees bring their passion and expertise to champion their causes
- You might transform your local environment and see green spaces blossom
- You could be helping the next generation at one of the great youth providers.

Horsham District Voluntary Sector Support service works with charities and community groups to provide volunteering opportunities. If you want to make a difference locally, please get in touch.

Follow our four simple steps

1. Register as a volunteer at www.volunteerhorshamdistrict.co.uk
2. Find an opportunity and 'register your interest'
3. We will ask the organisation to contact you
4. Meet up, find out more and hopefully get volunteering!

FURTHER INFO



You can email us at volunteering@horsham.gov.uk or give us a call on 01403 215191.



Step back in time at Horsham Museum

Visit Horsham Museum & Art Gallery this summer to discover more about Horsham's past, explore our galleries and collections or simply relax in our tranquil courtyard garden.

Family Crafts

Our summer of history craft events will return with a different activity every week. Each week's theme relates to a different event from Horsham's history, and you can pick up a free passport from the Museum to collect a stamp for each activity that you complete.

The crafts will take place Tuesdays to Fridays, 10.30am to 3pm from 25 July until 1 September (excluding the week of 7 August). Booking in advance is recommended.



Left: Children's Crafts at the Museum

Below: Our tranquil courtyard garden

Summer exhibition

For those of you who have not visited our summer exhibition on Fredrick DuCane Godman you can still catch the exhibition until 24 September. The display features photographs and items from the private Godman archives, capturing his fascinating life as a collector. Godman's contribution to the natural sciences was so important that he was elected to the Royal Society in 1882. Visitors to the exhibition can view his certificate of election including the signature of Charles Darwin, who endorsed his appointment. The certificate is on loan from The Royal Society.

Events

Check out our new summer evening events, where the museum will be open until 8pm with live music and refreshments on selected Fridays throughout the summer. Upcoming events are on Friday 14 July, Friday 4 August and Friday 15 September.

Our Godman inspired events will be taking place from 8 to 11 August, with an evening event on Friday 4 August. There will be a series of workshops and talks all related to the theme of natural sciences.

Horsham Now

Opening on Saturday 21 October our Horsham Now gallery will showcase stories from the 21st and late 20th centuries looking at famous residents and the District's literary and artistic links. A section of the gallery will focus on the video game developer, Creative Assembly who were founded in Horsham in 1987 and have called the town home ever since. The display will explore the process of creating the worlds and characters of a video game and will uncover the layers of art and design that go into crafting each title.

FURTHER INFO



The Museum is open Tuesday to Saturday, 10am to 4pm and all days across bank holiday weekends.

Visit the website for event details and booking information at: www.horshammuseum.org/events.

Look out for our new Wellbeing Hub

Our brand-new dedicated Wellbeing Hub opened in Horsham's Swan Walk Shopping Centre on 1 July.

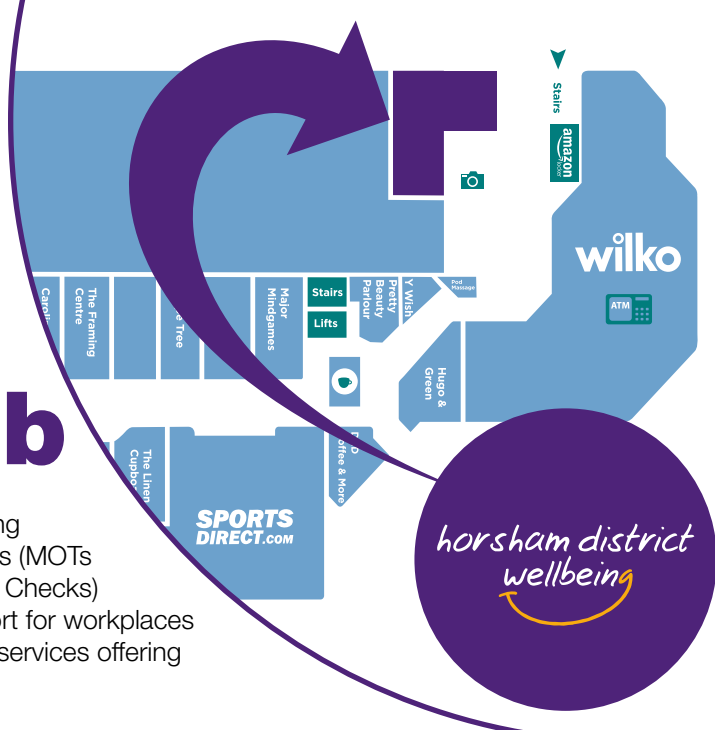
Horsham Wellbeing Hub offers adults that live or work in Horsham District the opportunity to drop in and get free support from our Wellbeing team to transform their health.

Let us help with:

- Managing your alcohol intake
- Eating well to improve your health and weight
- Getting active and improving your strength and balance

- Stopping smoking
- Wellbeing checks (MOTs and NHS Health Checks)
- Wellbeing support for workplaces
- Accessing local services offering support

Visit our friendly and welcoming centre to find out about the wide range of free services and courses on offer. This project is in partnership with West Sussex County Council and made possible by funding from the UK Shared Prosperity Fund.



FURTHER INFO

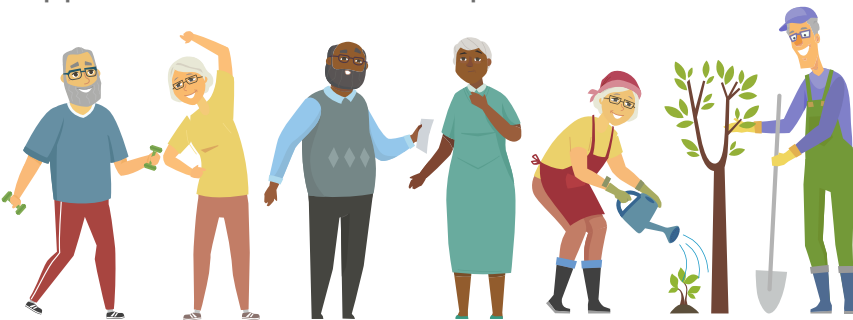
Horsham District Wellbeing offer courses and appointments across the District. For more information on locations and availability get in touch. You can also call us on **01403 215111** or visit: **www.horshamdistrictwellbeing.org.uk**.

ADVERTISEMENT

Looking for extra support with your day to day living?



The Connect to Support website is for anyone in West Sussex who is looking for additional help or support to maintain their independence.



westsussexconnecttosupport.org

Visit our website to:

- **DISCOVER** tips on improving your health and wellbeing
- **VIEW** equipment to help you stay independent
- **FIND** support for carers
- **LEARN** about options for extra care and support

Do you need help to use the website? Email: socialcare@westsussex.gov.uk or phone: 01243 642121

Cost of living: here to help

If you are struggling with rising costs, we are here to make sure you can find additional support.

The Council made an extra £1.1million of funding available dedicated to cost of living support for the 2023/24 financial year.

We have collated lots of places that will be able to help on our website at: www.horsham.gov.uk/community/cost-of-living-support.

This includes information on how to get help with food and essentials - including community fridges, and how to access the West Sussex Community Hub if your request is urgent.

If you are worried about money, or have found yourself in debt, there are a number of local and national organisations who can help.

We have information on household bills, pets and housing. There are resources to help support your health and wellbeing. There is also help for businesses, charities and armed forces personnel.

Saving money on energy bills

Saving energy is good for your pocket and the planet. You can find useful tips for reducing your energy use at home, and a range of schemes and grants that could help you at: www.horsham.gov.uk/climate-and-environment/energy-saving.

Face to face support

As well as looking for support online, there are lots of friendly places around the District you can drop into for a chat and advice.

We are continuing to run cost of living drop-in sessions in partnership with the West Sussex County Council Partnerships and Communities team. These are friendly sessions bringing together help from a range of organisations all in one place. You don't need an appointment.

Managing your money

We have funded Citizens Advice to employ two new advisors to support residents.

Citizens Advice can offer advice on money and debt and on what extra help you could get. You can find them online at www.advicewestsussex.org.uk or contact them via email, SignVideo, their website chat function or through their Freephone Adviceline on **0808 278 7969**.

How much could you save with our Leisure Access Card?

The Leisure Access Card is a free discount card that helps residents on low incomes and full-time students to save money when visiting local attractions, going to the gym, taking the children swimming, going bowling or catching the latest blockbuster at The Capitol in Horsham.

APPLY TODAY



It's completely free and you can apply in just a few minutes. See if you qualify at: www.horsham.gov.uk/sport-and-leisure/leisure-access-card.



Delivering more homes for local people



Three new affordable homes from Horsham District Homes, the Council's wholly owned housing company, provide much-needed accommodation for residents on the Housing Register.

The new homes consist of a four-bedroom adapted house and two three-bedroom family homes. They have been developed with sustainability at the forefront and include high levels of insulation, underfloor heating and air source heat pumps. These houses have enabled three local families who were on our housing register to access permanent affordable accommodation.

Horsham District Homes was created in 2019 to boost the existing delivery of affordable housing in the District, making the best use of available funds and providing a financial return to the Council for further reinvestment in housing and in District facilities.



FURTHER INFO

Please visit www.horsham.gov.uk/horshamdistricthomes for more information.



Managing your council accounts online

Did you know you could save time by registering for our self-service portal, where you can manage your Council Tax, Council Tax Support, Housing Benefit, Business Rates and Landlord payment accounts all in one place.

Simply create a new account with a password to get started.

Save time with Direct Debit
You can register to pay Council Tax or Business Rates by Direct Debit. Once you're set up, secure and convenient payments are taken automatically.

Sign up with your email address and your Council Tax or Business Rates account number.

FURTHER INFO

For further information and to find all the links you need to sign up to the portal please visit: www.horsham.gov.uk/council-tax-and-benefits.

www.horsham.gov.uk



Having trouble hearing?



Open your ears again with state of the art hearing aids
Hear what you have been missing!



The Horsham Hearing Centre

22 Worthing Road (opposite the Library) | Horsham | West Sussex | RH12 1SL

01403 218700 Horsham@hearcentres.com

*Book an initial consultation for only £35.00



Parent & Baby / Toddler / Childrens (4+)
swimming lessons, open 7 days a week.



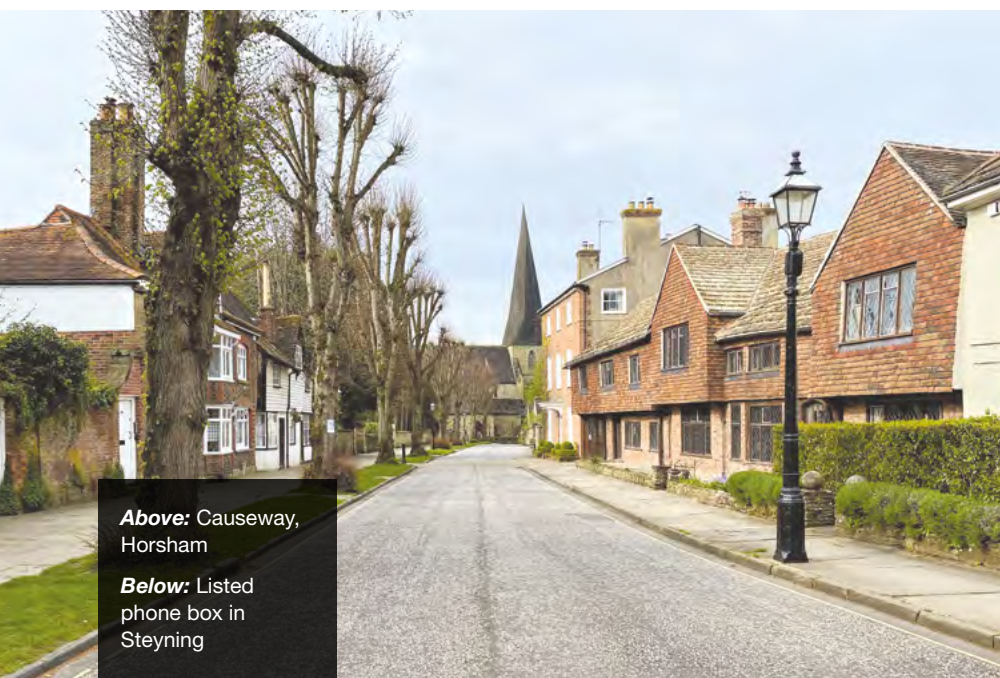
- Small classes
- Private luxury pool
- Qualified instructors
- Swim England registered
- CRB/DBS Checked Instructors
- Warm Pool - 34 Degrees
- 1 to 3 staff ratio for beginner lessons.
- Holiday intensive courses available



www.horshamswimschool.co.uk
Email: info@horshamswimschool.co.uk
Telephone: 07500 808898 | 07497 647220



Celebrating our architectural heritage in Horsham District



Above: Causeway, Horsham

Below: Listed phone box in Steyning

We are fortunate in our District to be surrounded by many interesting buildings and places of special architectural and historic significance.

In Horsham District there are some 1,800 listed buildings, and 37 Conservation Areas.

Listed buildings

Listing celebrates a building's special architectural or historical interest and protects it for future generations.

Listed buildings can also include more unusual structures such as the stocks in West Chiltington and a phone box in Steyning.

Listing does not prevent change to a listed building.



However, owners do need to apply for listed building consent from the Council for alterations that may affect special architectural or historic interest (in addition to any planning permission and building regulations approval required). Whether you are aiming to create extra living space, improve the appearance or accessibility of your property, our Strategic Planning team can provide advice before and during the application process. Our emphasis is on balancing the owners need with the historic significance of the building.

It is also important to get good advice from appropriate heritage craftspeople when considering works. Undertaking work without consent can be a criminal offence.

Conservation Areas

Where an area (from a few houses to a whole town) has a special architectural quality or historic interest it may be designated a Conservation Area. Our 37 Conservation Areas are spread across the District from rural Itchingfield and Blackstone to Horsham Town Centre.

In a Conservation Area, any works requiring planning permission are also subject to local historic conservation policies set out in our Local Plan and national policies outlined in the National Planning Policy Framework. Some types of development are restricted within Conservation Areas and permission may be needed for works affecting the external appearance of the buildings or to undertake works to some trees.

When considering applications within a Conservation Area, our Strategic Planning team give special attention to ensure they preserve and enhance the special character of settlements within our District.

FURTHER INFO



For more information including guidance on works to listed buildings and conservation areas, please see our website at: www.horsham.gov.uk/planning/listed-buildings.

You can also contact the planning team for general advice through our pre-application advice service: www.horsham.gov.uk/planning/planning-applications/pre-application-planning-advice.

Renovating and preserving local history

Many people long to live in a listed home as they look so attractive with their original features such as wooden beams, open fireplaces and historic stone or slate roofs – it's easy to see why so many of us fall in love at first sight.

Taking on the renovation of a listed building can be a rewarding experience for those who relish investing in or inhabiting part of the nation's historical fabric.

Bringing a historic home to life

Local residents, Mr and Mrs Asher wanted to alter, repair and extend their Grade II listed property. The project required planning permission, listed building consent and building regulations approval.



Sussex Building Control

Sussex Building Control - helping homeowners achieve their dreams

The couple, together with a local builder, were keen to engage the services of our Building Control team, Sussex Building Control at an early stage of the project. There was also consultation with conservation officers and Historic England.

Roz Mothe, our Building Control Surveyor on the project team, commented:

“As we're based locally, we're close to site and can visit at a time that's been convenient for the builder and the owners. We don't rely solely on photos to review work. We're responsible for checking every stage of the build to ensure it will be safe and efficient for the family to live in. The final phase of work is the extension and we're currently working towards completion. It's so rewarding helping to preserve and restore local history.”

This case study is just one example of the type of projects that Sussex Building Control can help with. We help residents create safe, energy efficient improvements to their homes every year. Our teams bring extensive expertise and invaluable specialist connections.



“ It's so rewarding helping to preserve and restore local history ”



Did you know...

Planning permission and building regulations approval (Building Control) are different. A project may need both or either one. Planning permission assesses whether the development fits in with local and national policies and Building Control covers the structural safety and accessibility aspects of development, and progress throughout the construction.

FURTHER INFO



If you are planning a new extension, conversion or other type of home improvement then please contact Sussex Building Control. You can find more information and contact details on our website at: www.horsham.gov.uk/building-control.



Historic scenes



A snapshot of happy and glorious events celebrating the Coronation of King Charles III.

Horsham Town Centre
We held a street party like no other, with performances across the town, our majestic markets, activities at the Museum & Art Gallery and a special Coronation Screening at The Capitol.



Horsham Images © TobyPhillipsPhotography.co.uk





District-wide celebrations

Parish and Neighbourhood Councils were offered up to £200 towards the cost of their Coronation celebrations. There were so many great ways to celebrate with live music, children's activities, picnics, fetes, screenings, vintage fairs, car rallies, family fun days and more.



Street parties

Many of you made the most of our fee waiver for road closures and got together with your neighbours hosting wonderful street parties.



THE BIG HELP OUT

The Big Help Out

Rounding off events was the launch of the Big Help Out; a national initiative to help boost volunteering. The Council are offering grants of up to £250 to local voluntary, community, or not-for-profit organisations for Big Help Out events locally.





Eager beavers help us to boost biodiversity



**Wilder
Horsham
District**

Not only a great project, it encourages the next generation to think about protecting the world around them and inspires them to consider the ways they might help nurture a thriving and biodiverse future.

Teaching staff said: “This was a great opportunity for the children to develop their teamwork, problem solving, environmental knowledge, communication, engineering and resilience skills.”

FURTHER INFO



To learn more about Wilder Horsham District - our unique and innovative five-year partnership with Sussex Wildlife Trust please visit: www.horsham.gov.uk/wilderhorshamdistrict.

The idea of a leaky dam sounds like a project gone wrong. However, with the help of our Wilder Horsham District project team, pupils from Arunside Primary School learned that slowing water down can be a brilliant way to help nature thrive.

Pupils were very excited to get stuck in and act like beavers collecting and using wood to make small dams in a stream running into the River Arun.

Slowing the flow of water can help to stabilise the environment, making it more resilient to extremes in temperature or rainfall. The leaky dam creates a protected oasis, storing water, filtering out and reducing the flow of pollutants and creating wetland to boost biodiversity.

Our Landowner Advisor Richard Black from Wilder Horsham District commented:

“Beavers are ecosystem engineers creating complex wetland habitats that benefit a host of other species, including people. A few beavers have been reintroduced to Sussex and are showing how they can be a huge positive in the right places. By building leaky dams we can mimic some of those effects and it was amazing to see how quickly the children grasped this concept and how effectively they solved the problems of dam construction. It’s a great way for them to feel empowered by making a real difference to big issues like flooding and climate change.”

“ It encourages the next generation to think about protecting the world ”



Sussex
Wildlife Trust



**Horsham
District
Council**

www.horsham.gov.uk

Leading the charge – getting you motoring with electricity

As more people take the plunge and upgrade to electric vehicles, we are making sure that more charge points are available throughout Horsham District.

A county-wide charge point network is being developed in an ongoing collaboration between Horsham District Council, West Sussex County Council, all of the councils in the County, and Connected Kerb (one of the country's leading providers of EV charging infrastructure solutions). Charge points are being installed in Council-owned car parks and in streets where residents do not have access to off-street parking, which is currently a barrier to going electric as there is nowhere convenient to charge a vehicle.

There are already several Council-owned car parks with new charge points, and more are planned during this year. A map including latest charge point locations, and the next phase of installations can be found here: www.connectedkerb.com/west-sussex-chargepoint-network.

If you live on or near a street where Connected Kerb are planning to install on-street charge points you will receive a leaflet to let you know what is going on, and asking for your views. The leaflet will be from Connected Kerb and West Sussex County Council.



Connected Kerb welcome ideas about other possible locations. Although they can't guarantee that a charge point will be installed, your suggestions will help them to map EV charge point demand for West Sussex.

GET INVOLVED



Simply go to www.connectedkerb.com/west-sussex-chargepoint-network-residents and click on the green 'register your interest' button to submit your suggested locations.

If you have any questions about the scheme, please email: EVcharge-points@westsussex.gov.uk.

ADVERTISEMENT

Transform a child's life by sharing yours

Every child deserves a safe and loving home. Become a foster carer with WSCC and receive up to £28.5k per year, plus comprehensive training and ongoing professional support

Want more information? Scan the QR code to book onto an information session, call **0330 222 7775** or visit fosteringwestsussex.org.uk



FOSTERING
WEST SUSSEX



Community Climate Fund – supporting local projects



Efficient LED lighting fitted at Horsham Tennis Club

This is the same amount of CO₂ you would emit driving 26 times around the M25!

The Community Climate Fund is a grant of up to £5,000 available for local voluntary or community groups undertaking new climate positive projects.

Groups such as schools, village halls, sports clubs and centres, scouts, guides and faith groups delivering inclusive projects can apply.

In this edition we look at the savings made at Horsham Tennis Club and the innovative water harvesting plans at Lower Barn Close Allotments in Horsham.

Lighting up your game more efficiently

We have had many successful applications from sports clubs and leisure centres switching to more efficient LED lighting. These projects improve facilities for residents right across the District, and include Horsham Tennis Club, Storrington Community Football Club, Steyning Tennis Club, Henfield Leisure Centre, Comptons Tennis Court, and Chanctonbury Leisure Centre.

One of the first to make use of the grant to upgrade their lighting was Horsham Tennis Club, who fitted external LED lights in 2021. They

have estimated that this will reduce their courtside lighting emissions by about 61%, or 960kg of CO₂ a year – this is the same amount of CO₂ you would emit driving 26 times around the M25!

Tackling water usage at Lower Barn Close Allotments

Lower Barn Close Allotments used resourcefulness, environmental awareness, and community support to design an effective water conservation project. Along with substantial volunteer support, they will be using our funds for the raw materials to complete a community DIY project to build three water harvesting stations on their allotments.

This will allow about 100 people to access water all year round and lengthen the growing season as the mains water is turned off between November and March. Most importantly it should reduce their mains water usage by about 20% or 25,000 litres. This saving is the equivalent to taking a 5-minute shower 417 times!

This saving is the equivalent to taking a 5-minute shower 417 times!



The community at Lower Barn Close Allotments

Make your climate friendly project happen

The next grant application round opens 3 July and closes 13 August 2023, the following round opens 2 October and closes 12 November 2023.

The funds must be used for brand new projects, which are self-sustaining beyond Council funding and carry a lasting impact on the wider community to inspire positive climate action.

Your organisation can apply once a year, providing it is for a new project in each application.

INFO



Please visit www.horsham.gov.uk/communityclimatefund to find out more.

You are welcome to discuss your application with a Sustainability Officer before applying. Please call **01403 215156** or email communityclimatefund@horsham.gov.uk.

Share your views on our draft Climate Action Strategy

A draft Climate Action Strategy has now been produced for the District. This builds on the work that the Council and others are already taking on climate change.

It aims for the District to become carbon neutral by 2050, and for our area to be better prepared for the impacts that the changing climate is already having. The draft Strategy includes a 10-year action plan for the Council, our key partners, and the wider community. Achieving this will be challenging. However, it will also create opportunities and benefits, such as improving health and wellbeing, uniting communities, and creating innovation potential for businesses.

A vital component is collaboration, the Council cannot achieve the goals in the draft strategy on its own. Tackling climate change requires action from residents, businesses, community groups and partner organisations. The draft Strategy will facilitate the collective action needed to build a resilient future for generations to come across the entire District.

“have your say”

We would like your views on the draft Strategy. These views, and other engagement, will shape the final Strategy. The draft Strategy and an online survey are on our website at: www.horsham.gov.uk/climateactionstrategy. This also has information and advice on actions that you can take on climate change, and groups in your area that you could join.

GET INVOLVED



To stay up to date with how the actions are progressing read our blog and sign up for our Climate Action email newsletter at: www.horsham.gov.uk/climate-and-environment. If you have any specific questions, please contact: climatechangeaction@horsham.gov.uk.





High visibility

With an average of 96,544 cars passing through these three sites each month, your advert will have a great reach.

A targeted audience

You can appeal to potential customers who are living, working, and shopping locally.

Cost-effective promotion

Our car park advertising rates offer an affordable way to promote your business or event.

Flexibility

It is a convenient and flexible way to promote your business. You can choose to advertise for a short period of time or longer term, and you can also choose to advertise in a specific car park or in multiple car parks.



Boost your business or promote your event

If you are looking for an efficient way to reach many potential customers, advertising in our car parks is a great option for your business or event.

We have A1 and A0 advertising space in Swan Walk, Piries Place and The Forum Car Parks, along with horizontal advertising space on the parking barriers.

FURTHER INFO



For more information visit: www.horsham.gov.uk/carparkadvertising.

ADVERTISEMENT



Expert advice on paying for care

Long-term care in your own home or in a residential care home is expensive, but with expert advice from independent financial specialists, Carewise can help you to make informed decisions on choosing and paying for the right care.

The Carewise care fees specialists are regulated by the Financial Conduct Authority and members of the Society of Later Life Advisers, so you can have peace of mind when discussing your finances.

Contact Carewise to find out how you could benefit.



WEST SUSSEX | Care Funding Advice

carewiseadvice.com | carewise@westsussex.gov.uk | 0330 222 7000

Fall detector – helping mum keep her independence

Fiona's mother Ann has a Pearl Advanced fall detector with a Seven base unit from our Community Link service.

Recently her alarm was triggered after Ann had a nasty fall. Even though she was outside her home her devices were able to alert the 24-hour alarm receiving centre because of their impressive 300m+ range.

Fiona got an alert call from the response team so was able to quickly locate her mother. She said:

"My mum was living independently with Alzheimer's and to help her do this, I arranged for her to have a fall detector from the Community Link team, just for my peace of mind.

"The team were efficient at installing the device and were very clear when explaining how everything worked. Nothing was too much trouble, and Mum took to wearing the fall detector necklace around her neck immediately.

"On 15 February I received a phone call from the Alarm Receiving Centre telling me that Mum had triggered the detector, but that they couldn't get an answer from her home phone. I went straight around to find that she had fallen a few metres from her house. Her neighbours were with her, and an ambulance had already been called.

"If Mum hadn't been wearing her fall detector, I wouldn't have known what had happened. The neighbours didn't have my number and the delay in contacting me would certainly have added to Mum's overall traumatic experience.

"The Community Link team were so kind when Mum was in hospital, and she was delighted with the card they sent her.

The detector, and the team who set it up, are the 4th emergency service as far as I'm concerned. I wouldn't feel as happy about Mum living independently without the added security of knowing that if Mum fell again, the Council have got it covered!"

Ann's Technology Enabled Care

Our Pearl Advanced Fall Detector is an easy to wear pendant with fall detection technology. If a fall and impact is detected, or if the personal help button is pressed, the device will communicate with a base unit to send an alert to our 24-hour alarm receiving centre.

The pendant has four modes which can be set up to suit the wearer: with settings for people with epilepsy, those requiring no touch functionality, and for high risk or less mobile users.

The pendant is water resistant and can be worn in the bath and shower.

"The Community Link team were so kind when Mum was in hospital"

"I arranged for her to have a fall detector from the Community Link team, just for my peace of mind"



Can we help you and your family?
Devices can be invaluable in giving users the confidence and independence to continue their daily activities, knowing they can summon essential help should anything happen.

These devices can be there to help a whole range of people – those living or working alone, managing various health needs, or simply wanting additional safety measures.



You can find more information on the full range of products at: www.horsham.gov.uk/communitylink.

Speak to our trained team members who will recommend devices based on your current needs on **01403 215230** or email us at community.link@horsham.gov.uk.

Helping businesses become more sustainable



Our Economic Development and Sustainability teams have been working on an exciting series of collaborative projects aimed at supporting local businesses on their journey to improved sustainability.

New webpage and video series
We have created a new 'Supporting your business to be carbon neutral' webpage signposting businesses to relevant funding, training, carbon footprint calculators and more. A jargon-busting glossary is also included.

What's more, a new video series is launching to help inspire local businesses to become more sustainable. This series showcases relatable case studies from other local businesses, including top tips

and quick wins such as switching lighting and considering investing in solar panels.

Keep an eye out on the Council's social media pages and webpages for the videos: www.horsham.gov.uk/business/supporting-your-business-to-carbon-neutral.

Sustainable Business Special Newsletter

A new quarterly 'Sustainable Business Special' edition of our fortnightly business email newsletter has been introduced. This aims to raise awareness of support available for local businesses.

This edition contains a wealth of information on the theme of sustainability, no matter how far along a business is on its journey to improve its environmental performance.

The business newsletter currently has over 1,800 subscribers, who receive up-to-date news straight to their email inbox on local funding and training opportunities, national business support initiatives and upcoming webinars. To stay up-to-date, Horsham District businesses are invited to subscribe to the newsletter here: www.horsham.gov.uk/business.

Recycling at Hepworth Brewery



Join the West Sussex Business Hub

Last year, we collaborated with local authorities across West Sussex to commission the development of the West Sussex Business Hub.

The Hub is now home to a growing community of local business owners, who can access an expanding range of support, advice and opportunities to connect with other local businesses as well as organisations who offer business support.

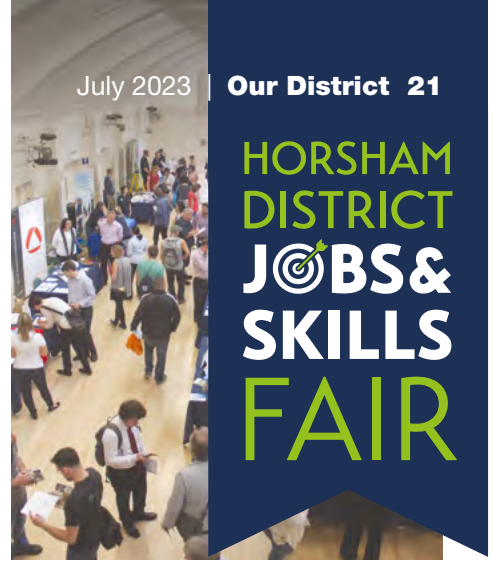
SIGN UP TODAY



Sign up for free today: <https://west-sussex-business-hub.mn.co>.

www.horsham.gov.uk





HORSHAM DISTRICT JOBS & SKILLS FAIR

Calling all local jobseekers

Save the date for the 2023 Jobs Fair at Horsham's Drill Hall, taking place on Saturday 30 September.

Local jobseekers can meet a range of local employers with vacancies and find out about training opportunities.

Find more information at: www.horsham.gov.uk/jobs-and-careers.



Plate Up Local

We are working in collaboration with Natural Partnerships CIC to encourage local hospitality and independent retail businesses to build new relationships with local suppliers and source local produce. This will reduce their food miles and support the improvement of their sustainability credentials.

A new public facing campaign will launch in the summer. Find out more at: www.sussexfoodanddrink.org.

New Flexible Business Space Directory

Do you work from home and find yourself looking for a change of scenery?

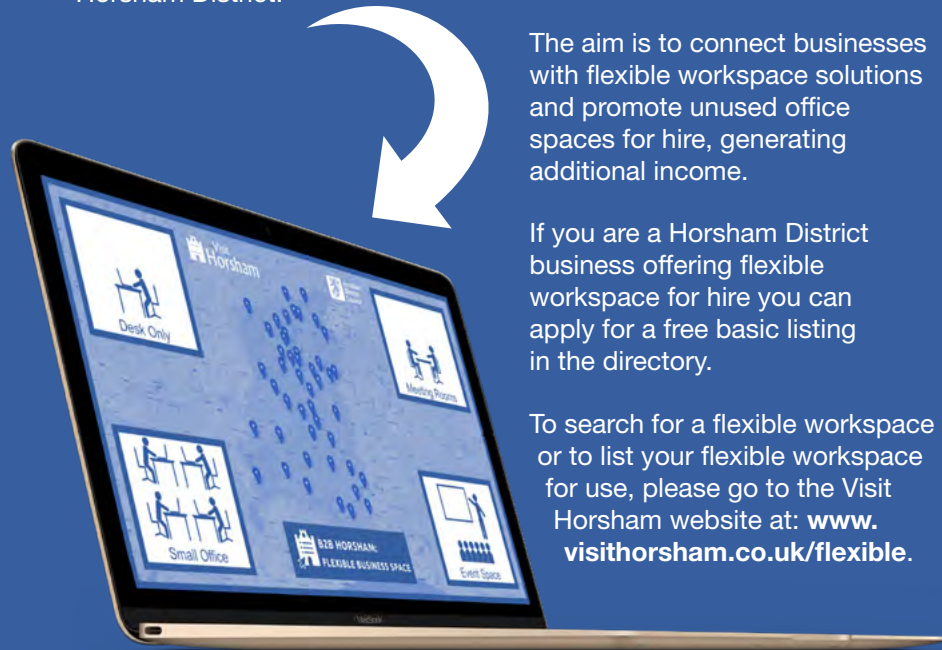
You can now access a new Flexible Business Space Directory to explore a range of flexible workspace and event space solutions available to hire in Horsham District.

Working with the Council's Economic Development team, Visit Horsham (an independent online Horsham District directory, guide and community forum) have extended their digital directory to feature community-based workspaces encouraging collaboration, networking, and growth.

The aim is to connect businesses with flexible workspace solutions and promote unused office spaces for hire, generating additional income.

If you are a Horsham District business offering flexible workspace for hire you can apply for a free basic listing in the directory.

To search for a flexible workspace or to list your flexible workspace for use, please go to the Visit Horsham website at: www.visithorsham.co.uk/flexible.



What are your business space needs?

Local businesses are being invited to complete a new short survey to help build a picture of current and future business space needs in Horsham District.

Every fortnight those completing the survey have the chance to win one of four team building escape room experiences with Major Mindgames.

We have collaborated with the Council's Strategic Planning team, commercial partners and local businesses to establish the survey.

GET INVOLVED



Businesses can find out more and complete the short survey here: www.surveymonkey.co.uk/r/BSSQRGK.



Stress-free leasing and lettings

Our leasing and letting schemes offer private sector landlords in the Horsham District reliable and consistent returns.

We offer management and maintenance services. Furthermore, you can be sure you will be helping those who most need it in your community.

Landlords play an important part in meeting our District's housing need – we house local families registered on the housing waiting list in urgent need of accommodation. Many are families with children in need of a secure home.

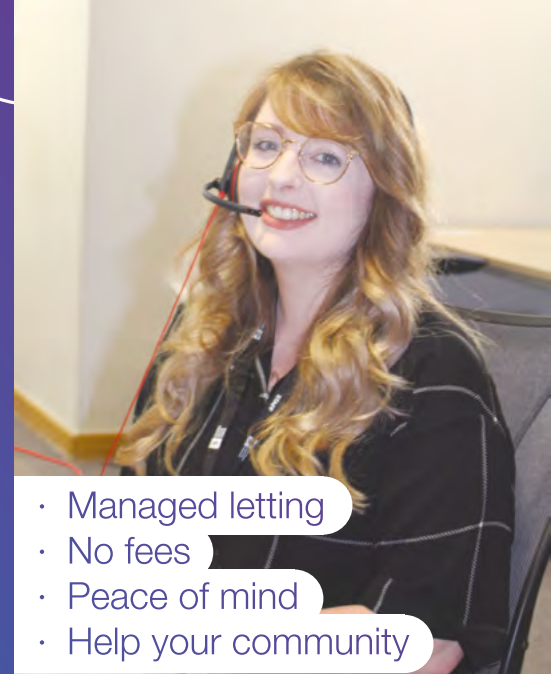
We offer two tiers of service:

Leasing

You lease your property to us for three to five years. We pay you rent at 20% below the current Local Housing Allowance Rates and take care of everything else: tenant management, inspections, and some maintenance.

Lettings

We find you a tenant for your property and they pay you rent at Local Housing Allowance Rates.



- Managed letting
- No fees
- Peace of mind
- Help your community

TALK TO US TODAY



If you have a property that might be suitable please call Victoria Thompson on **01403 215572** for an informal chat or email us at horshamPSL@horsham.gov.uk.

For more information, please visit: www.horsham.gov.uk/letwithus.

Make the most of new digital parking permits



As part of the West Sussex County Council Integrated Parking Strategy, new online on-street parking permits came into operation from 3 July 2023.

Digital parking permits are already in place at many car parks across Horsham District, as well as in other areas of West Sussex. Digital permits for Horsham's Controlled Parking Zones, including resident and visitor permits can now be purchased.

by telephone. This applies to resident's and visitor's permits.

Digital permits bring many benefits, including a reduced reliance on paper and plastic, instant email delivery and greater convenience as you can manage your parking needs at any time that suits you.

The move to digital permits means there is no need to display paper permits in your vehicle. Simply purchase your permit online and receive email notification when it is active.

The virtual permits are provided by MiPermit. You can purchase and manage your parking permits online, 24 hours-a-day, seven days-a-week. MiPermit can be accessed through the Council's website or

FURTHER INFO



Residents without online access are still able to request a paper application from the Council's Parking Services team on **01403 215379** during office hours.

For more information, please visit our website at: www.horsham.gov.uk/digitalpermits.





Is it time for a clear out?

Bulky Bag could be the answer.

For that rubbish clearance that doesn't really need a skip, but is still too much to stick in the car and take to the tip, why not try our Bulky Bag service?

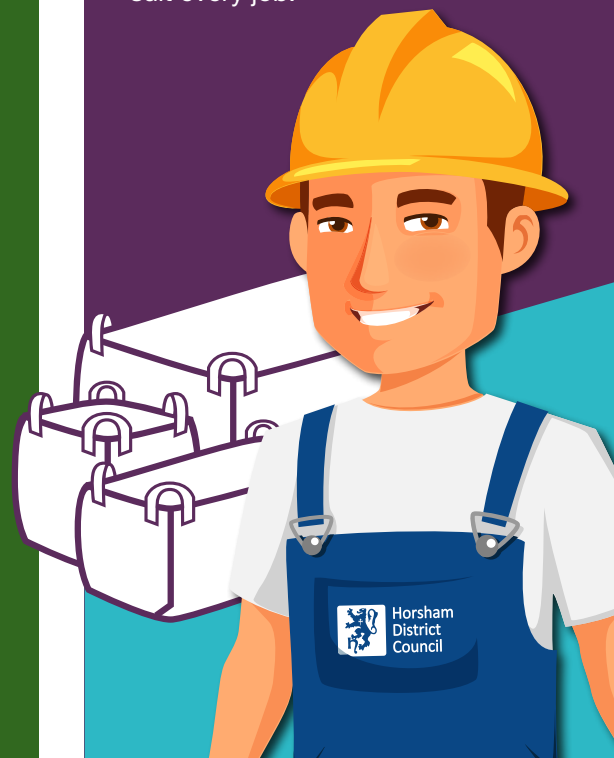
We can deliver you a Bulky Bag for all your waste and pick it up within five working days when you are finished with it.

ORDER TODAY



Perfect for house clearances, home projects, garden waste and commercial waste. Please check our website at: www.horsham.gov.uk/bulkybag for more details on our service and what can go in your Bulky Bag.

With three sizes to choose from, there's a Bulky Bag to suit every job.



Sussex's super recyclers



When it comes to recycling, we have an outstanding track record. Horsham District currently achieves a recycling rate of over 53%, the highest in Sussex, and in the top 50 across the whole of the UK.

Did you know?

Food waste from UK homes produces roughly 25million tonnes of CO₂ every year.

Around 4.5million tonnes of edible food is thrown away each year by UK households. 25% of this wasted food is due to cooking, preparing or serving too much - this costs UK households £3.5billion each year.

How much of your rubbish is food waste?

41.5% of the rubbish in an average Horsham District bin is made up of food waste. Much of this food waste can be easily avoided.

Five ways to reduce your food waste

1. Shop smart. Plan your meals and stick to your list
2. Batch cook and freeze the rest
3. Think before you throw. Could your leftovers make a tasty lunch?
4. Compost any peelings and eggshells
5. Check your fridge temperature to keep food fresher longer.

Get more ideas at www.lovefoodhatewaste.com.

Get yourself a hot bin or a compost bin

A hot bin can take cooked food waste including bones, peelings, and pet waste and turn it into rich compost in 30 to 90 days by heating up the contents.

The result is a nutrient-rich compost for your garden. If you wanted to use a traditional cold composter, keeping a container in the kitchen to collect your fruit and veg peelings could reduce your waste by up to 10%.

Last summer 15 families and community groups trialed hot bins, you can read all about their



experience by visiting the website at: www.horsham.gov.uk/recyclingchampions.

LOCAL DISCOUNT



Horsham District residents can now purchase a HOTBIN® composter with a 10% discount or a cold composter at a reduced price. Find more information about all our composting offers on our website at: www.horsham.gov.uk/composting.

Horsham District Councillors

Billingshurst

Cllr Sam Bateman
(Liberal Democrats)
sam.bateman@horsham.gov.uk

Cllr Mark Baynham
(Liberal Democrats)
Cabinet Member for Finance and Resources
mark.baynham@horsham.gov.uk

Cllr John Trollope
(Liberal Democrats)
john.trollope@horsham.gov.uk

Bramber, Upper Beeding and Woodmancote

Cllr Mike Croker (Green)
Leader of the Green Group
michael.croker@horsham.gov.uk

Cllr Roger Noel (Conservative)
roger.noel@horsham.gov.uk

Broadbridge Heath

Cllr James Brookes
(Liberal Democrats)
james.brookes@horsham.gov.uk

Cllr Jonathan Taylor
(Liberal Democrats)
jonathan.taylor@horsham.gov.uk

Colgate and Rusper

Cllr Tony Hogben
(Conservative)
tony.hogben@horsham.gov.uk

Cllr Liz Kitchen (Conservative)
elizabeth.kitchen@horsham.gov.uk

Cowfold, Shermanbury and West Grinstead

Cllr Joanne Knowles
(Liberal Democrats)
joanne.knowles@horsham.gov.uk

Cllr Lynn Lambert
(Conservative)
lynn.lambert@horsham.gov.uk

Denne

Cllr Ruth Fletcher
(Liberal Democrats)
Cabinet Member for Local Economy and Place
ruth.fletcher@horsham.gov.uk

Cllr John Milne
(Liberal Democrats)
Deputy Leader and Cabinet Member for Planning and Infrastructure
john.milne@horsham.gov.uk

Cllr Clive Trott
(Liberal Democrats)
clive.trott@horsham.gov.uk

Forest

Cllr Colin Minto
(Liberal Democrats)
colin.minto@horsham.gov.uk

Cllr Jon Olson
(Liberal Democrats)
Cabinet Member for Leisure, Culture and Green Spaces
jon.olson@horsham.gov.uk

Cllr David Skipp
(Liberal Democrats)
Chairman of the Council
david.skipp@horsham.gov.uk

Henfield

Cllr Malcolm Eastwood
(Independent)
malcolm.eastwood@horsham.gov.uk

Cllr Josh Potts (Conservative)
josh.potts@horsham.gov.uk

Holbrook East

Cllr Nick Grant
(Liberal Democrats)
nick.grant@horsham.gov.uk

Cllr Warwick Hellawell
(Liberal Democrats)
warwick.hellawell@horsham.gov.uk

Holbrook West

Cllr Nigel Emery
(Liberal Democrats)
Vice Chairman
nigel.emery@horsham.gov.uk

Cllr Chris Franke
(Liberal Democrats)
chris.franke@horsham.gov.uk

Itchingfield, Slinfold and Warnham

Cllr Kasia Greenwood
(Liberal Democrats)
kasia.greenwood@horsham.gov.uk

Cllr Tricia Youtan
(Conservative)
tricia.youtan@horsham.gov.uk

Nuthurst and Lower Beeding

Cllr Dennis Livingstone
(Liberal Democrats)
dennis.livingstone@horsham.gov.uk

Pulborough, Coldwaltham and Amberley

Cllr Jon Campbell (Green)
jon.campbell@horsham.gov.uk

Cllr Paul Clarke (Conservative)
paul.clarke@horsham.gov.uk

Cllr Len Ellis-Brown (Green)
len.ellis-brown@horsham.gov.uk

Roffey North

Cllr Tony Bevis
(Liberal Democrats)
tony.bevis@horsham.gov.uk

Cllr Belinda Walters
(Liberal Democrats)
belinda.walters@horsham.gov.uk

Roffey South

Cllr Jay Mercer
(Liberal Democrats)
Cabinet Member for Environmental Health, Recycling and Waste
jay.mercer@horsham.gov.uk

Cllr Sam Raby
(Liberal Democrats)
Cabinet Member for Housing, Communities and Wellbeing
sam.raby@horsham.gov.uk

Rudgwick

Cllr Richard Landeryou
(Conservative)
richard.landeryou@horsham.gov.uk

Southwater North

Cllr Peter van der Borgh
(Liberal Democrats)
peter.vanderborgh@horsham.gov.uk

Cllr Mike Wood
(Liberal Democrats)
mike.wood@horsham.gov.uk

Southwater South and Shipley

Cllr Colette Blackburn
(Liberal Democrats)
Cabinet Member for Climate Action and Nature Recovery
colette.blackburn@horsham.gov.uk

Cllr Alexander Jeffery
(Liberal Democrats)
alex.jeffery@horsham.gov.uk

Steyning and Ashurst

Cllr Victoria Finnegan (Green)
victoria.finnegan@horsham.gov.uk

Cllr Nicholas Marks (Green)
nicholas.marks@horsham.gov.uk

Storrington and Washington

Cllr Emma Beard (Green)
emma.beard@horsham.gov.uk

Cllr Claudia Fisher (Green)
claudia.fisher@horsham.gov.uk

Cllr Joan Grech (Green)
joan.grech@horsham.gov.uk

Trafalgar

Cllr Martin Boffey
(Liberal Democrats)
Leader of the Council
martin.boffey@horsham.gov.uk

Cllr Anthony Frankland
(Liberal Democrats)
anthony.frankland@horsham.gov.uk

West Chiltington, Thakeham and Ashington

Cllr Philip Circus
(Conservative)
Leader of the Opposition
philip.circus@horsham.gov.uk

Cllr Joy Dennis (Conservative)
joy.dennis@horsham.gov.uk

Cllr Alan Manton
(Conservative)
alan.manton@horsham.gov.uk

Disclaimer: Contents of this magazine were correct at the time of going to print. Full details of your councillor can be found at: www.horsham.gov.uk/councillors.



We're hiring!

We have an exciting variety of roles on offer for individuals from all backgrounds who care about their local community.

We have a great personal development ethos and a supportive working environment.

We would love to hear from you.



Never miss an opportunity
Scan the QR code to sign up to job alerts

Current Vacancies

For more information and details on our current vacancies, please visit: www.horsham.gov.uk/jobs-and-careers.



ARMED FORCES COVENANT



Contact us

Community Link

01403 215230

Economic Development

businessdevelopment@horsham.gov.uk

Employment Support Service

Journey2work@horsham.gov.uk
01403 215334

Electoral Services

elections@horsham.gov.uk
01403 215126

Environmental Health

publichealth.licensing@horsham.gov.uk
01403 215641

Leisure facilities

Billingshurst Leisure Centre
01403 787500

Blackbridge Community Centre
www.horsham.gov.uk/community/rooms-for-hire/blackbridge-community-centre

Steyning Sports and Swimming Centre

01903 879666

The Bridge Leisure Centre

01403 211311

The Pavilions In The Park

01403 219200

The Capitol, Horsham

01403 750220
www.thecapitolhorsham.com

Horsham Drill Hall

01403 211436

Horsham Park Barn bookings

contact@thecapitolhorsham.com
01403 750220

Horsham Museum & Art Gallery

01403 254959
www.horshammuseum.org

Rookwood Golf Course

01403 252123

Southwater Country Park

01403 731218

Warnham Local Nature Reserve

01403 256890

Licensing

licensing@horsham.gov.uk

Alcohol licensing

01403 215578

Hackney carriage

private hire licensing

01403 215471

Housing

Homeless enquiries

housing@horsham.gov.uk

Housing application enquiries

housing.applications@

horsham.gov.uk

01403 215204

National Benefit Fraud Hotline

0800 854 4400

Council Tax, business rates and benefits

08081 648610

Parking

parking@horsham.gov.uk

01403 215379

Planning Services

Development Management

General enquiries

planning@horsham.gov.uk

01403 215187

Building Control

General enquiries and helpline

building.control@horsham.gov.uk

01403 215151

Recycling and Bins

Including trade waste, litter, garden waste, cleansing and dog fouling

yoursay@horsham.gov.uk

01403 733144

For all other general enquiries

01403 215100

Stay Connected

Sign up to receive updates on topics that are important to you at www.horsham.gov.uk/stayconnected

AUTUMN HIGHLIGHTS

AN EVENING WITH
NIGEL OWENS MBE



Sat 2 Sep

CROONERS
UNCAGED



Fri 15 Sep



Fri 13 & Sat 14 Oct

STARCHITECTS
BY MOTIONHOUSE



Thu 26 Oct