

Our District



Horsham
District
Council

News from Horsham District Council
Winter 2022

**Check out our
new waterfront
Discovery Hub** | Page 2
.....

**What to look out
for at our new look
Museum** | Page 12
.....

**Drop into our
Wellbeing Centre** | Page 7



Follow us on Twitter @HorshamDC



Find us on Facebook/HorshamDC



Lilyford

PRIDE OF PLACE

Downsizing done differently

A fresh new approach that offers a more fully realised lifestyle. A brand new development of 16 apartments, ideally suited to downsizers looking for camaraderie, security and peace of mind. Perfectly placed in Midhurst town centre, at the heart of the South Downs.

DUNDEE HOUSE

Midhurst, West Sussex
1 & 2 bedroom
apartments now selling
from £315,000



Book your private
viewing today

01730 770 660
sales@lilyford.co.uk
www.lilyford.co.uk

housebuilder
Awards
FINALIST 2021



Welcome

There is much to feel positive about in 2022, as whilst we still need to remain mindful about the pandemic, we can now slowly but surely start to do more normal things again and enjoy reconnecting with people.

This is very much reflected in this edition where we are pleased to announce the opening of our new waterfront Discovery Hub in Warnham Local Nature Reserve. This is a real asset to the Reserve, hosting a broad selection of entertaining and informative experiences to help visitors engage with the nature around them.

We are also sharing articles about how we are supporting local businesses as they start to thrive after the lockdown, and a wide range of schemes to help residents get back into the workforce or find new training opportunities.

It also brings highlights about how we are helping our young people as we emerge from the pandemic, the success of our recent recycling trials and the re-opening of our much loved Museum & Art Gallery and all the amazing new exhibitions it has for everyone to enjoy.

Let's continue to work together to keep Horsham District as safe as we can.

Councillor David Skipp

Chairman of
Horsham District Council



Send us your feedback on this edition by emailing us at communications@horsham.gov.uk

Disclaimer: Contents of this magazine were correct at the time of going to print, but due to the ongoing pandemic, advice on staying safe and any local restrictions may change. Please visit our Covid-19 web pages for the very latest information: www.horsham.gov.uk/coronavirus

Discover what's new at Warnham	2
Managing ash dieback	3
Horsham Park voted one of the best green spaces in the UK	3
New skatepark for Horsham	3
A day in the life of an Outreach Worker	4
Drop in to our new Wellbeing Centre	7
Enjoy great value discounts in our leisure centres	7
Welcome Back... we're open for business	8
Helping you find work and new training opportunities	9
Helping our telecare users switch to digital	11
What to look out for at our new look Museum & Art Gallery	12
Last Knight at the Museum	13
Ease yourself back to work with our commuter car park	14
Climate friendly car park lighting	14
Exciting new trials to boost our recycling rates	16
Tackling the HGV driver shortage – we're hiring!	18
Your Mind Matters	18
Our Young People Safety Survey: the results are in	19
Activities to support young people and parents	19
An update on the Horsham District Local Plan	20
Keeping you warm and saving you energy costs	21
Becoming a more climate friendly District	22
How to create a more wildlife-friendly garden	23
Horsham District councillors	24
Contact us	25



Discover what's new at Warnham

An exciting new experience has been opened at Warnham Local Nature Reserve which has already attracted lots of new visitors young and old.

Unique design and breath-taking views

The Discovery Hub boasts a unique octagonal design created from wood and floor to ceiling glass, and showcases the best view ever of the Reserve's iconic Millpond. It also hosts a vast array of entertaining and informative experiences and activities to help visitors engage with the wildlife, nature and heritage around them.

Educating, informing and entertaining

The space can be used for both educational and leisure purposes and tells the story of the industrial, natural and social heritage of this important nature and conservation reserve.

The Hub can be accessed by a new entrance garden inspired by the works of local poet Percy Bysshe Shelley, and a courtyard with seating provides a new welcome area.



Entering the Hub through an 'animated corridor', once inside, visitors can discover the wide variety of wildlife, flora and fauna on the site. Interactive displays and a digital microscope help visitors delve into more detail.

They can also focus in on the historical significance of the Reserve site using touch screens, take a spin on the 'seasonal wheel' to discover what's topical at any particular time of the year and check out the regularly updated sightings board and display cabinets bursting with historical artefacts.



Inspiring a generation

We believe the Hub will inspire the next generation to protect nature at the Reserve and appreciate its rich history, whilst understanding the impacts modern life can have on the environment.



For more details and to sign up for email newsletter updates please visit www.horsham.gov.uk/parks-and-countryside.

Warnham Local Nature Reserve can be found just off the A24 at the Robin Hood roundabout, Warnham Road, Horsham, RH12 2RA.

Managing ash dieback

We have developed a programme of inspection and felling to tackle the increasing threat of ash dieback disease affecting trees on council-owned land.

The programme is helping to determine how we will manage the anticipated risks and issues associated with the spread of ash dieback, a serious fungal disease, across the Horsham District.

It is estimated that up to 90% of all Ash trees in the UK will be affected by ash dieback and ultimately be killed by the disease over the next decade. There is currently no cure or method of control to prevent or protect against the disease. Affected trees could pose a significant risk to people and property if not dealt with in a timely fashion.

There will be a phased felling approach targeting woods where the risk is greatest.

In most cases the area will be left to naturally re-generate. This is the most environmentally friendly way to re-establish the woodland.



For further information about the disease and the programme, please visit www.horsham.gov.uk/ashdieback.

Horsham Park voted one of the best green spaces in the UK

Horsham Town Centre's iconic Horsham Park has been recognised with three major accolades recently.

Blooming marvellous

First up, the Park was recognised twice in the 2021 South and South East in Bloom awards scheme.

It was awarded a 'Silver-Gilt' in the *Large Park* category of the awards scheme and a 'Thriving' in the *It's Your Neighbourhood* category, which focusses on community participation and environmental responsibility, as well as gardening achievement.

Flying the Green Flag

The Park was then recognised for the second year running by the prestigious Green Flag Award Scheme as one of the best green spaces in the UK.

This scheme recognises and rewards well-managed parks and green spaces, setting the benchmark standard for their management across the UK.

Many thanks and congratulations to our Parks and Countryside team and our army of volunteers including the Friends of Horsham Park, the dedicated team who work tirelessly in the Human Nature Garden and everyone else who helps to make our Park such a special place.

Above:

Celebrating Horsham Park's 2021 South and South East In Bloom awards

Below:

Green Flag Award 2021/22



New skatepark for Horsham

SKATEPARK HORSHAM 2022

We are now in the process of tendering for a replacement for Horsham Skatepark which will be built in free-form concrete.

We are working with a group of local riders to try to ensure the legacy of the original Horsham Skatepark is retained and the new design reflects the needs of riders of skateboards, BMX bikes, scooters and skates.

Updates will be provided on the Council's website and Instagram pages. Design work will take place in early Spring 2022 and will be subject to planning permission. It is hoped that the skate park will be in use by the end of Summer 2022.

“

**Homelessness
is everywhere
and it can
affect anyone**

”



Left:

Nick Wiggington
with rough sleeper
starter kit

Above:

Evidence of
rough sleepers

Right:

An outreach
worker leaves
his calling card

A day in the life of an Outreach Worker

You may think that a relatively affluent area such as Horsham District would not have many people who are without a home and forced to sleep rough, but this is far from the truth. In fact, rough sleeping is a broad and complex issue requiring a variety of approaches and solutions.

In this edition, we explore a typical day in the life of an Outreach Worker.

Meet Nick Wiggington. Here he gives us a rundown of one of his days providing face to face support to people who are homeless or in unsafe accommodation.

How does the average day pan out for you as an Outreach Worker?

There is no average day really – the job varies immensely, depending on who engages with our outreach support and what help they need.

This morning, I was alerted to a client who is currently rough sleeping in the Horsham area. I accompanied him to an assessment to find out the level and type of support he would benefit from. Our overall aim is to empower our clients to fulfil their potential and secure a brighter future. Everyone has the right to have a home.

My next visit was to a client who is preparing to move into our Recovery Accommodation, a unique residential service, where people who have experienced homelessness are seeking safe shelter to tackle their addiction to drugs and/or alcohol. This client is recording his alcohol use as part of his preparation to detox and I am supplying him with more diary sheets to help him track this.

My last visit for the day was to an entrenched rough sleeper who has chosen to live outdoors in a rural location. I see this client every fortnight, to check in on his wellbeing and to see if I can support him to access food and other essentials. He is an articulate, intelligent person who has made an informed choice that this is the lifestyle he wants. I explore if I can support him to access services should he ever change his mind for any reason.

What types of things do you typically talk about on your visits?

There are a variety of subjects I talk about and it very much depends on the person, their background and their needs. If someone is willing to share, I really like to learn about them and what led them to become homeless so that I can establish how best to support them. I am there not only to provide emotional support but also practical help. I can provide new clients with a rough sleeper starter kit and a food parcel.

What do you like most about your job?

I like the variety of the role and the autonomy that I have. The job is neither dull nor predictable. Those that I support are some of the most interesting, inspiring and resilient people I have had the honour to meet.

Can you share any success stories?

One of the people I have been supporting recently moved into our Recovery House to start a detox from long-term alcohol misuse. I am immensely proud of him – going through this isn't easy for anyone, it takes a lot of courage and determination to make that step. He really wants to turn his life around and, as with all the people we support, we will be with them every step of the way.

If you are concerned about someone sleeping rough in England or Wales, you can highlight them using the StreetLink website www.streetlink.org.uk.

If you are homeless or threatened with homelessness, it is important to get help as soon as possible. Please contact Housing Services by applying online www.horsham.gov.uk/housing/homelessness/what-to-do-if-you-are-facing-homelessness, by calling **01403 215204** or by emailing housing@horsham.gov.uk.



TURNINGTIDES
ENDING LOCAL HOMELESSNESS

Horsham District Council works in partnership to deliver the outreach service with local charity Turning Tides – the largest provider of homeless services for single people throughout West Sussex.

For almost 30 years, Turning Tides has supported thousands of people who don't have anywhere to live. Through a variety of specialist support services, both residential and community based, the aim for each person is that they are empowered to fulfil their potential and secure a brighter future.



Looking for extra support with your day to day living?



The Connect to Support website is for anyone in West Sussex who is looking for additional help or support to maintain their independence, manage day-to-day tasks and improve their health and wellbeing.



Visit our website to:

- **DISCOVER** tips on improving your health and wellbeing
- **VIEW** equipment to help you stay independent
- **FIND** support for carers
- **LEARN** about options for extra care and support.

westsussexconnecttosupport.org

Do you need help to use the website? • Email: socialcare@westsussex.gov.uk • Phone: 01243 642121



YOUR MIND MATTERS

The way you feel matters. Your emotional health is as important as your physical health.

westsussex.gov.uk/YourMindMatters



Drop in to our new Wellbeing Centre – it's good to talk

Summer 2021 saw us open our brand new pop-up Wellbeing Centre in Horsham Town Centre, all in the same year as our wellbeing service is celebrating its 10th anniversary.



HDC Chairman Cllr David Skipp, Maddie Dubois, Harry Crayford, Cllr Claire Vickers open Horsham's new Wellbeing Centre

Based in Unit 4a in The Forum (in the walkway through to TK Maxx), you can drop in to the Centre to find out about a wide range of health and wellbeing services that we offer, all of them free of charge.

The spacious new centre offers you the opportunity to pop in and sit down and talk about how a few small changes to your health and wellbeing will help you move forward in a positive way.

You can find out about:

- Healthy eating and weight loss
- Prediabetes
- Getting active
- Improving strength and balance
- Quitting smoking
- Wellbeing checks (MOTs and NHS Health Checks)
- Alcohol awareness and reduction
- Simple steps to improve your mental wellbeing

- Wellbeing support for workplaces
- Other local services offering support.

We offer a range of free courses to help you make changes and live life to the full, or you can have a one-to-one appointment with one of our Wellbeing Advisers.

The Centre is staffed Monday to Friday 10am to 4pm. Evening appointments are available.

For more information go to www.horshamdistrictwellbeing.org.uk, email info@horshamdistrictwellbeing.org.uk or call 01403 215111.

NHS Health Checks now available

Are you aged between 40-74 years old? For the first time our team can now offer free NHS Health Checks.

An NHS Health Check is designed to spot early signs of stroke, kidney disease, heart disease, type 2 diabetes or dementia and is available to 40 to 74 year olds with no pre-existing conditions. Once you've had your NHS Health Check, one of our friendly Wellbeing Advisers will discuss your results and be on hand with advice and support should you need it.

Enjoy great value discounts in our leisure venues

Apply for a Leisure Access Card

Our Leisure Access Card is a free discount card that helps residents on low income and full-time students to save money when visiting local attractions such as going to the leisure centre, taking the children swimming, going bowling, catching a movie at The Capitol in Horsham or discovering Warnham Local Nature Reserve.

It's completely free and you can apply in just a few minutes. To find out more and apply for a Leisure Access Card, visit www.horsham.gov.uk/lac.

If you would prefer to apply via post, please send the completed application form, a photo of each of the applicants and proof of eligibility to **Leisure Access Card, Horsham District Council, Parkside, Chart Way, Horsham, RH12 1RL.**

The card will be posted to you as soon as possible.

Please send any further queries you may have via email to yoursay@horsham.gov.uk or call us on 01403 215100.

Welcome Back ... we're open for business

It's been a tough year for our businesses but thankfully their doors are now fully open. Our towns and villages have been given a helping hand to bounce back from the pandemic with financial support from the Government's 'Welcome Back' funding.

The Council is working with seven local communities to develop a programme of funded activities that will create a feeling of wellbeing and promote a safe return for residents and shoppers.

Here's a snapshot of what's been going on so far.

Right:
Pulborough
Harvest Fair
2021



Harvest market and community gardens for Pulborough

In Pulborough, one Welcome Back funded project was the Harvest Fair which played host to many local traders who came along to showcase their goods, helping to build the local economy.

Funds were used to supply a large marquee to enhance the customer experience at the Fair. Additionally, a project is underway to increase the amount of nature-friendly planting in Lower Street to soften the street scene and encourage more people (and wildlife!) back to the area.

Escape to the great outdoors

We are also aiming to use the Welcome Back Fund to develop a series of outdoor escape room experiences around the District, so that the whole family can follow trails and have fun in the various high streets safely, and in the open air.

Instantly 'Instagrammable'

We are also working closely with businesses to increase the 'Instagrammability' of their spaces by creating fun and interesting installations and artworks that will attract Instagram users and will act as free promotion for local businesses.

Pop Up
Horsham

A new Pop-Up Shop to help 'reinvent our high street'

Further Welcome Back funding has been used to reintroduce Pop-Up Horsham as part of our post pandemic economic recovery strategy, branded 'reinventing our high street'.



Our brand-new pop-up store is in West Street, right in the heart of Horsham, with a busy pedestrianised area and high footfall.

The new shop allows pandemic entrepreneurs, smaller enterprises and start-up businesses the opportunity to trial business concepts and trade in a high street environment using dedicated events space, without the commitment or cost of a longer-term lease.

The Council is especially keen to help those who have been made redundant and started a new business within the past eighteen months. It will also be working with more established independents and small businesses whatever their background, including those within the travel, entertainment, well-being, or hospitality industries.



Entrepreneurs interested in this opportunity can find out more information at www.popuphorsham.co.uk or by email at hello@popuphorsham.co.uk.

Helping you find work and new training opportunities

Y-WISH
YOUTH WORKS!

The Y-WISH Youth Hub

If you are aged between 18 and 24 and need advice and guidance on your future career and work plans, the Y-WISH Youth Employment Hub in Horsham's Swan Walk Shopping Centre is the place to go.

Since February 2021, the Council's Youth Employment Support team has worked with over 150 young people, with many successfully accessing jobs, apprenticeships, training, or further education.

We help with CVs, job applications, interviews, and can guide you through the maze of job sites and apprenticeship options, and introduce you to ideas you may never have considered. We also work with lots of specialist partners, who can support anything else you may need help with.

Call the team on **01403 215334**, email journey2work@horsham.gov.uk or just drop in – we are open Monday to Friday 9am to 5pm.

   @HorshamDC

IN²WORK

In2Work employment support

In2Work is another council-run employment scheme for the over 24s.

We provide one to one support and mentoring, face to face or virtual, job seeking advice, CV reviews, interview support and any other support you may need through our various partners.

Since January 2021 we have worked with over 100 people, with many finding work as a result.

If you are claiming benefits and want to know more, please ask your Jobcentre Plus work coach. Alternatively, contact our In2Work Support Officer on **01403 215104** or email journey2work@horsham.gov.uk.

“ I really appreciate your help with my job search. It would have taken me weeks and I would have stressed over it so much without your support ”

Welcome return for Horsham District Apprenticeships and Skills Fair in 2022

We are happy to be hosting our popular Apprenticeship Fair again this year for local people looking for apprenticeships, traineeships, graduate placements or further education and training.

The Fair will take place on **Saturday 12 February** at the Drill Hall in Horsham. We are expecting dozens of local apprenticeship employers and training providers with hundreds of exciting opportunities.

This event is not just for the young – apprenticeships and similar opportunities are now available for anyone of any age or background.

Selected employers and training providers will deliver short presentations to talk about their approach and their roles.

For more information, please visit <https://www.jobsfair.horsham.gov.uk> or email journey2work@horsham.gov.uk.

Online employment support for all

If you want a place to find jobs, employment advice and lots more, please visit the Horsham Jobs Fair website <https://www.jobsfair.horsham.gov.uk>.

ADVERTISEMENT






THE BUSINESS HOTHOUSE
GRANTS | GUIDANCE | GROWTH

**FREE EXPERT SUPPORT
FOR ALL BUSINESSES**



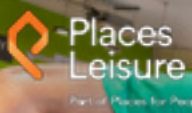
- Medium
- Small
- Micro
- Pre-start

hothouse@chi.ac.uk






chi.ac.uk/business-hothouse

ADVERTISEMENT



Whatever place you're into

A place for everyone.
Gym, personal training, group workout classes, swimming, and so much more!

Visit placesleisure.org for more information.

The Pavilions in The Park	The Bridge Leisure Centre	Billingshurst Leisure Centre	Steyning Leisure Centre
01403 219 200	01403 211 311	01403 787 500	01903 879666

ADVERTISEMENT



Expert advice on paying for care

Long-term care in your own home or in a residential care home is expensive, but with expert advice from independent financial specialists, Carewise can help you to make informed decisions on choosing and paying for the right care.

The Carewise care fees specialists are regulated by the Financial Conduct Authority and members of the Society of Later Life Advisers, so you can have peace of mind when discussing your finances.

Carewise could also help to protect your finances for the future. Contact Carewise to find out how you could benefit.

 **carewise**
WEST SUSSEX | Care Funding Advice



 carewiseadvice.com

 carewise@westsussex.gov.uk

 0330 222 7000

Helping our telecare users switch to digital

The UK's telecom networks are set to undergo substantial changes in the coming years as all analogue telephone lines will become obsolete and will be replaced with a digital service.

The good news is that the transition to digital lines should be straightforward for most telephone customers.

Our Community Link team are already a step ahead with preparations and support for our service users who use lifeline alarm equipment to help them stay independent in their own homes.



Here we take a look at how Mr and Mrs Suart, a local couple in their nineties, have already embraced the new digital technology and have upgraded their alarm system.

Aware that by 2025 all telecom networks in the Horsham District would be switching to digital, when Mr and Mrs Suart needed a new lifeline alarm, they decided to take the plunge and go completely digital at the same time.

Our Community Link advisers stepped in to help with the installation of the new all-digital alarm system to ensure all went smoothly and the Suarts' digital transformation was stress free and successful.

Their new digital alarms can be plugged in anywhere in their property instead of just via the landline telephone point as with the analogue alarms.

The couple commented:

"The switch to digital was completely seamless for us. The actual alarm is louder and the speech is clearer than with the old analogue alarm, which is a good thing for us.

"Our new digital system is simple, solid and reliable."

For added peace of mind new smoke detectors can also be linked to the new all-digital alarm system.

New lifeline pendants now have a 300 metre operating range, twice the distance of the old style pendants.

If you, or someone you know, could benefit from the Community Link service please call **01403 215230** or email **community.link@horsham.gov.uk**.

Alternatively check out our website for more information on our full range of products **www.horsham.gov.uk/communitylink**.

For a no obligation demonstration or to find out more, please call **01403 215230** or email us at **community.link@horsham.gov.uk**. Alternatively, please complete the coupon here and send to: **Community Link, Horsham District Council, PO Box 106, Horsham, RH12 1BR. Licence No. SEA 6963**

Name

Address

Postcode Telephone No.



What to look out for at our new look Museum & Art Gallery

Across the country, forced lockdown caused many a household to redecorate, re-purpose, and refresh their homes. At Horsham Museum & Art Gallery it was no different.

Our lockdown closure provided the ideal opportunity for a major refresh of our displays and galleries before we welcomed back visitors in October 2021.



Above: Radically Different Landscapes by Robin Alexander Elliott

Below: Eleanor Coate Photography

Right: One of the new installations at Horsham Museum

Take a look at what's happening over the next few months.

- The next exhibition in the Art Gallery will open in January with Radically Different Landscapes by Robin Alexander Elliott. A selection of Robin's artworks will be on display which combine geometric shapes and bold colours with realistic elements to depict the landscapes of Sussex and Kent. The exhibition will run from 20 January to 2 April 2022.
- 17 February will see our first gallery changeover in the Domestic Life Gallery and the display will detail domestic life during the Second World War in Horsham and across the home front.

- The spring exhibition will showcase the work of Royal Horticultural Society, Gold Medal winner Eleanor Coate. Photographing flowers in macro and close-up, Eleanor's photographic prints follow the traditions of botanical illustration from the 18th century. The exhibition will run from 15 April to 18 June 2022.

The Museum & Art Gallery is now open 10am to 4pm from Thursdays to Saturdays with a view to extending its opening hours in spring 2022.



For more details about the Museum & Art Gallery and to sign up to our email newsletter please visit www.horshammuseum.org.

Or keep up with our blog at www.horshammuseum.org/collections/blog.

“ I have been visiting the Museum for 70 years, but when I went back after the refresh it felt like the first time ”



Last Knight at the Museum

After an outstanding 32 years' service at the helm, our Museum & Art Gallery Curator Jeremy Knight has decided to retire.

Jeremy's last night at the Museum also coincided with the Museum's re-opening after lockdown, as the Council hosted a dual purpose re-opening celebration alongside a special celebration of thanks to mark Jeremy's indefatigable contribution as he retired.

The Council has been extremely fortunate to benefit from Jeremy's extensive knowledge over the years.

He has built many strong relationships with key regional and national institutions which has enabled the Museum to regularly host nationally important exhibitions and displays.

Jeremy will be greatly missed, his impact in both protecting and promoting the District's rich heritage is immeasurable.

“ Jeremy has single-handedly shaped Horsham Museum & Art Gallery into the exemplary facility that we have today, and this legacy will stretch far into the future ”



Above: At last Jeremy can sit down and put his feet up

Right: Welcome to Nikki Caxton as she takes the helm

Amongst just some of his many achievements include:

- Creating over 700 diverse and engaging exhibitions and numerous collections which have illustrated the richness of the District's heritage and culture.
- Linking up with the V&A for an exhibition on cloisonné in 2013 and hosting a Royal Academy watercolour exhibition in 2018.
- Receiving special recognition by The High Sheriff of West Sussex Lady Emma Barnard for his exceptional contribution to the community through his work.

On bowing out Jeremy said:

“Above all I have enjoyed working with a great bunch of volunteers and staff, transforming the Museum and the District's feeling about its past and rescuing objects, documents, books and pictures that are the foundation of future developments.”

We all wish Jeremy a long, happy and healthy retirement.



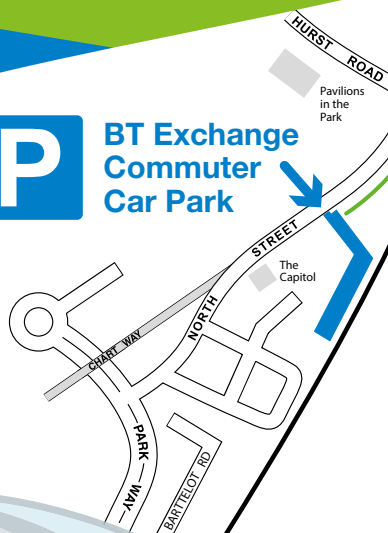
Welcome to Nikki

Newly recruited to the role of Associate Curator is Nikki Caxton who joins from the Victoria & Albert Museum in London where she worked as an Exhibitions Manager and Registrar, project managing temporary exhibitions. In this role she worked alongside Curators, Conservators, and Designers to create each exhibition's unique experience. She was also responsible for loan arrangements from museum and private collections. Prior to the V&A she worked in exhibitions and preventive conservation roles for the National Trust at Nymans and Chartwell.

Ease yourself back to work with our commuter car park



**BT Exchange
Commuter
Car Park**



**Horsham
Railway
Station**

200 yards /
3 minute
walk

With the easing of lockdown and many local commuters now travelling to work once more, the Council is pleased to promote its BT Exchange Commuter Car Park in North Street, Horsham.

The car park is just a three minute walk from Horsham train station and provides 81 parking spaces in the town centre.

It can accommodate commuters parking from Monday to Saturday from 6am to 5pm. The standard prices for customers to buy season tickets are £6 a day, £23 a week, £88 a month or £930 a year.

Flexible payment options are available through the MiPermit Portal. This provides a virtual permit, so there is no need to carry cash and personal accounts can be managed via the webpage www.horsham.gov.uk/mipermit.

Pay and Display tickets using cash or payment cards are still available if required. After 5pm Mondays to Saturdays, parking will remain free of charge. On Sundays and Bank Holidays motorists can still use pay and display facilities at a charge of £1.50 for the whole day.



For full details of how to register for a digital permit for the BT Exchange Car Park, please visit www.horsham.gov.uk/mipermit.

Climate friendly car park lighting

Our council-owned car parks are going LED.

We are replacing all the lights in our multi-storey car parks with LED lighting. By replacing just the first 387 lights in the Swan Walk Car Park we will be reducing our carbon emissions by almost 19,000kg a year, as well as saving almost £11,000 in energy bills.








THE BUSINESS HOTHOUSE
 GRANTS | GUIDANCE | GROWTH

NEED MONEY TO START OR GROW A BUSINESS?



Our Invest4 Grant Fund can award up to £5,000 to start-ups and up to £170,000 to growing businesses to help them to grow faster.

Over 90% of applications to the fund are successful.

EMAIL US TODAY

hothouse@chi.ac.uk


chi.ac.uk/business-hothouse





ARE YOU A LAWN LOVER?

From as little as
£18*
 per treatment
*Based on 5 yearly treatments at £18 each

HELP YOUR LAWN TO THRIVE, NOT JUST SURVIVE

Over the last 30 years our love for lawns has grown and grown (just like our grass!). We combine our passion and enthusiasm with innovative technology as we continue to revolutionise UK Lawn Care.

Our groundbreaking 12-month **Lawn Treatment Programmes**, keep your grass looking its best all year round, ensuring your lawn receives the love and attention it deserves.

Let's create the lawn we both love

Start your Lawn Care journey today:
 Call: Henfield 01273 491099
 Email: horsham@greenthumb.co.uk
 Visit: greenthumb.co.uk/branch





Knowing you

We all need legal advice and support at times.

Our services are available at competitive fixed prices, designed to give you easy access to specialist legal support when you need it most.

We can help you with:

- Will writing
- Setting up a trust
- Probate and estate administration
- Arranging lasting power of attorney

For more than accountancy, business and financial advice contact Gemma Spencer, Solicitor:

Call: +44 (0)1403 253 282
 Email: enquiries@krestonreeves.com
 Visit: www.krestonreeves.com

Exciting new trials to boost our recycling rates

We make no secret of the fact that as a district we are very good at recycling, in fact we have the highest recycling rate in the whole of Sussex.

So how do we improve on this?

There is always more that can be done to build on this success. In recent months we have launched three exciting new trials with our residents to help further boost our recycling rates and reduce the amount of waste going to landfill.



Food waste trial is launched

Selected households of the Horsham District took part in a new recycling and waste collection trial to include separate collections of food waste and Absorbent Hygiene Products (AHP) in September last year.

The 12-week trial collection service involved 100 different households from across the Horsham District including family households, single occupancy homes and flats.

The food waste trial was developed as a result of resident feedback telling us that they would like separate food waste collections amidst concerns about the impact of food waste on the environment.

Improving our rubbish and recycling collections

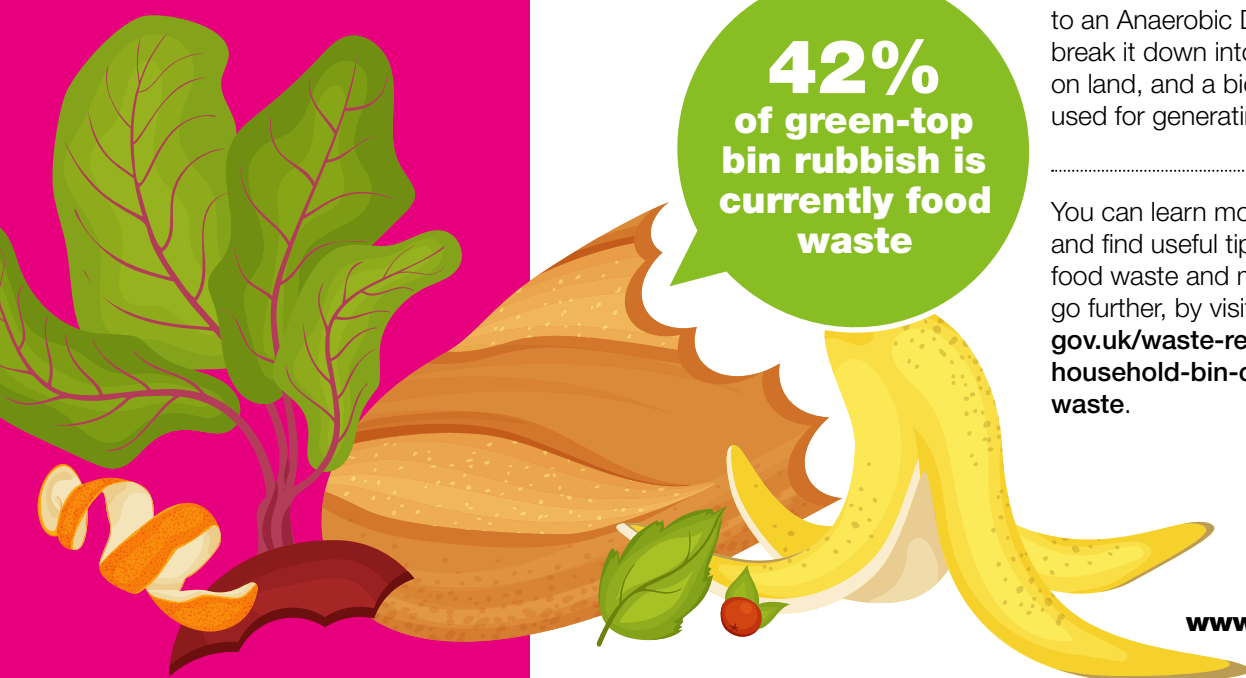
The results gathered from the trial will be key in helping us to fully understand how we can improve the way we deliver future recycling and rubbish collections and establish the correct frequency of collections, and size of bins required to effectively deliver this kind of service to meet residents' needs.

Our waste composition analysis shows that food waste makes up approximately 42% of the rubbish currently put out for collection in green-top bins, so the trial results should provide us with an accurate picture of just how much food waste and AHP we can divert away from being processed as waste in the future.

Collected food waste will be taken to an Anaerobic Digester which will break it down into biofertiliser for use on land, and a biogas, which can be used for generating energy.

42%
of green-top
bin rubbish is
currently food
waste

You can learn more about the trial and find useful tips on reducing your food waste and making your food go further, by visiting www.horsham.gov.uk/waste-recycling-and-bins/household-bin-collections/food-waste.



Free electrical, textiles and batteries collections are a massive hit

May 2021 saw us launch an eight month trial collection service for broken small electricals, unwanted textiles and used batteries.

We are delighted to say that the free service has proved a massive hit with our residents.

In just six months, our iconic bright pink collections van has made over 3,100 collections.

In total so far, over 6.4 tonnes of small electrical items have been collected and over 17 tonnes of textiles.

We also launched a collection service for household batteries where you can leave your used batteries out on top of your green-top and blue-top bins on your regular bin collections day. So far, a staggering 6.2 tonnes of batteries have been collected.

A win, win

All the reusable textiles collected are exported to countries where many people can't afford new clothing. This saves them from going to landfill waste, gives them a new life and benefits others.

Small electricals are processed at a specialist facility which takes component parts and recycles them into something new.

It all serves to reducing the carbon impact of these items going to waste. A win, win all round.

The trial which was launched as a result of a partnership with West Sussex County Council.

Saving hundreds of tonnes of waste

Over 800 tonnes of textiles and 130 tonnes of small electricals are thrown away in rubbish bins in the Horsham District every year. Booking a free collection of these items will save valuable resources from going to waste.

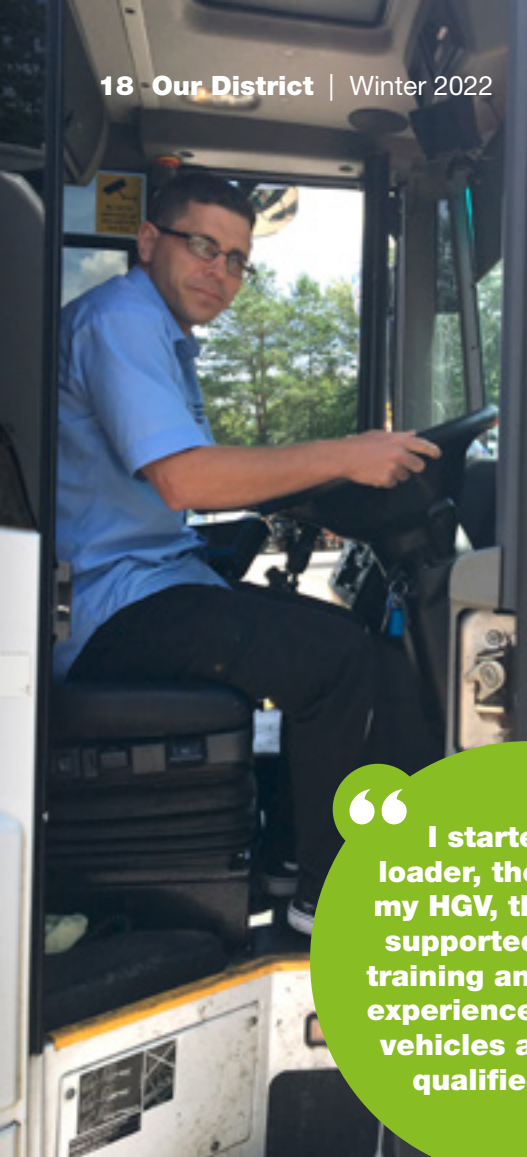
For more information and to book your collection please go to www.horsham.gov.uk/recycling.

We've made over 3,100 collections in just six months

Textiles are sorted into grades by hand at a processing facility and then sent on for reuse and recycling.

Small electricals are processed at a specialist facility which breaks down the component parts and then recycles them into something new.





Tackling the HGV driver shortage – we're hiring!

Industries nationwide face ongoing shortages of HGV drivers which is currently triggering widespread disruption to services across Britain.

Local authorities across the UK have also been affected with many being forced to suspend garden waste collection services for a time, and some having to reduce collections of recycling and waste.

“ I started as a loader, then passed my HGV, the Council supported me with training and gave me experience in driving vehicles as a newly qualified driver ”

Whilst the effect of the shortages has been challenging for us here in Horsham, we have been in the fortunate position of not yet having to suspend or cancel

collections, as we have put various proactive measures in place to prevent the effects of shortages.

Want support to train for a new career?

To help combat any problems and future proof our collection services for residents, we are running an innovative Newly Qualified Driver Recruitment campaign.

Additionally, we have grown our own staff talent pool by supporting loaders who would like to transfer their skills and take their HGV driver tests to become fully qualified drivers.

Take a driver experience day

As part of the campaign we are offering free Driver Experience Days where potential drivers can visit our depot, take a driving assessment and, if they are still interested, progress to the next stage of the recruitment process.

The new recruits would also be supported with their Certificate of Professional Competence be reimbursed for medical expenses, and enjoy the numerous benefits of working for the Council.

Building a bank of drivers

Our future aspiration is to build up a bank of drivers that we can deploy to our local authority partners. We are also looking at our workforce planning over the next five years as there are several drivers who have indicated they will be looking to retire, so for us, building our driver numbers will be an ongoing process.

If you are interested in applying to be an HGV driver or attend one of our Driver Experience Days, sign up to receive more details at www.horsham.gov.uk/hgvdrivers.

Alternatively you can email drivertraining@horsham.gov.uk.

Your Mind Matters



The pandemic has been tough and affected pretty much everyone's mental health.

A new campaign called Your Mind Matters has been launched by West Sussex County Council and partners to provide support for young people and their families by providing advice, resources and information about local services, events and information.

Your mind matters, the way you feel matters, and your emotional health is just as important as your physical health so take some time to explore the Your Mind Matters website and see what support is available for you, your friends and family.

www.westsussex.gov.uk/YourMindMatters



Our Young People Safety Survey: the results are in

Over the summer months of 2021 we asked young people across the District for their views about where they felt safe or unsafe when they were out and about.

They also shared ideas with us about what could be done to make local public spaces safer.

Here's some of the highlights of our survey:

Ideas for making outdoor spaces safer included more CCTV cameras, better lighting and more police and warden patrols in areas where young people gather.

Ideas for reducing levels of anti-social behaviour focused on providing more positive activities and building a sense of community.

When asked whether it was fair that young people were often blamed for anti-social behaviour many responses made the point that young people are often stereotyped as troublemakers.

One respondent said: "Whilst we understand that the youth are sometimes to blame, we feel we are judged more and not trusted by members of the public"

Another young person suggested: "Increase the amount of inclusive and social areas for young people".

Thank you to all the respondents to our survey, we are now actively working with young people to put in place some of the suggestions and ideas put forward.

“
Seeing the wardens patrolling makes me feel safer
”

“
We need more safe places to hang out
”

Activities to support young people and parents

Young people's emotional wellbeing is important at all times but the pandemic has made us ever more aware of the need to ensure that both young people and their parents have access to trusted support.

Throughout the summer holidays the Council, as a lead member of the Horsham District Safe and Well Partnership, worked in collaboration with other partners to create a programme of events to support families.

Here's a snapshot of the various activities.

Horsham Town Centre's new **Wellbeing Centre** hosted drop-in sessions where parents and young people in year groups 7 to 11 could pop in to access advice and information. Specialist services were in attendance and there were free stress buster give-aways.

West Sussex Mind hosted online and face to face informal sessions to discuss the challenges to young people's mental health in recent times.



4The Youth and the **Southwater Youth Project** delivered support sessions at key sites throughout August.

The Council's Neighbourhood Wardens launched their '**Talking Tents**' initiative in branded gazebos across the District. Some sessions were supported by **Sussex Clubs for Young People**. Wardens were available to have a chat and offer support and advice on the many support services available.

A wide variety of activities which were well attended were also organised over the October half-term school holidays.

For more information and advice about services and support for young people please visit www.horsham.gov.uk/community/children-and-young-people.

An update on the Horsham District Local Plan

For some time now the Council has been preparing a Local Plan that will set out planning policies and proposals to guide development in the District up to 2038. The Council is required to prepare a Local Plan by law.

What has happened so far

In 2020 we published for consultation the first draft of the Horsham District Local Plan. After assessing the feedback to that consultation and gathering additional evidence we were planning to publish the Local Plan this year in a document known as the Regulation 19 Local Plan.

At this stage we would be seeking your views on whether the Local Plan meets government requirements outlined in National Policy prior to examination by a Government appointed Inspector. However there has now been a delay to this process.

What is causing the delay to the Local Plan process?

On 14 September 2021 Horsham District Council received a 'Position Statement' from Natural England setting out concerns that existing water abstraction in Horsham District, as well as parts of Chichester District and Crawley Borough, is harming internationally protected species in the Arun Valley.

Abstracted water is used by everyone in their day to day lives, including for drinking water and household use, supporting industry, and in schools, businesses and shops.

The advice from Natural England is that in order for development to proceed in our District it must be 'water neutral'.

What is Water Neutrality?

Maintaining water neutrality means that new development should not increase the rate of water abstraction from our water supply site above existing levels.

What this means for the Local Plan

This statement from Natural England means Horsham District Council can now only legally approve planning applications if it can be shown that they are water neutral. Whilst this is not expected to impact most smaller-scale householder applications, it is clear that this water mitigation issue may impact our ability to deliver development in the future.

What we are doing in response to this

We are working with Natural England and Southern Water on longer term solutions for water neutrality. In the short term, any planning applications that materially increase water demand will need to be water neutral. We need to allow time for strategies to be produced and submitted by developers.

We will continue to work together with our neighbouring councils, parishes and other stakeholders to better understand what we can and will do. We are also seeking legal advice as to what Natural England's Position Statement means for the Council's Local Plan and Neighbourhood Plans.

This is a new and evolving issue for the Council. All updates will be shared online at www.horsham.gov.uk/localplan



ADVERTISEMENT



Tools Wanted

Do you have unwanted carpentry or engineering tools in your shed, garage, or workshop?

I'll purchase all hand tools and workshop equipment you no longer use or require.

CALL NIGEL ON 01903 816600

Other items of interest: old books, postcards, model toys inc. Dinky & Corgi, watch & clock-making equipment, automobilia, military items, cameras, etc. If it's an entire collection or just a couple of bits, please contact me.

ALL tools considered

Keeping you warm and saving you energy costs

Some of our residents are concerned about energy bills, heating costs and energy supplies during the winter months.

We are glad to be able to share information which will help reduce energy costs and enable residents to have a warmer, cosier home, whilst reducing carbon emissions. Good news for both your purse and our planet.



Home Energy Visits

LEAP (Local Energy Advice Partnership) is a free service that is helping people keep warm and reduce their energy bills without costing them any money. Working with LEAP we can help with energy switching, free energy saving measures, money advice and check if you're eligible for insulation, a new appliance or even a new boiler.

The LEAP service is free, and it has already helped many residents across the District. You can qualify under various criteria including low income, ill health, family situation and if you receive benefits.

Book a free home visit by calling **0800 060 7567** or visit www.applyforleap.org.uk.



Energy supplier gone out of business?

Over the past few months we have seen a number of energy suppliers going out of business.

It can be a worrying time for customers. If your supplier goes bust, you will not be left without gas or electricity. The industry regulator, Ofgem will step in and find a new supplier for you.

The Citizens Advice Bureau has lots of useful information about this issue and can help with a wide range of concerns around energy debt, suppliers and emergency help. The West Sussex Citizens Advice Bureau have set up a special telephone numbers to help the District's residents.

They can be contacted Monday to Friday 9am to 5pm on **01243 974063**.



Tips to beat condensation

During the colder months our Environmental Health team receive lots of enquiries from residents about how to deal with condensation and accompanying mould.

Condensation occurs when warm air gathers on cold surfaces and over time can encourage mould growth.

Here are our top tips to keep on top of it.

Reduce the mould:

Dry windows and walls with a cloth. Use diluted bleach or a fungicidal wash to kill and clean the mould. Stain block and anti mould paint can be used if redecorating. Soft things like fabrics can be treated with bicarbonate of soda.

Release less water into the air:

Drying washing inside over the winter can be unavoidable, try and give heavy clothes like towels and jeans an extra spin to remove as much moisture as you can. If drying clothes inside, an ailer is great in a room with heating and mechanical ventilation, and where you can, shut the door. When cooking use saucepan lids for a speedier cook time and to trap steam.

Ventilate:

Draught-free ventilation is really important. Keep trickle vents open and if you can do so safely, leave windows open a little for a while when you are at home. Use mechanical extraction in kitchens and bathrooms, ideally for 20 minutes each time.

Heating:

Try and keep your home warm all the time, this will stop the walls becoming cold and reduce condensation. Use room controllers if you have them to keep rooms at a comfortable temperature.

Becoming a more climate friendly District

Our communities are all working hard to reduce carbon emissions across the District.

Planting orchards, installing water butts, composters and solar panels, switching to LED lighting and refurbishing a 1970s milk float to create a touring Inspiration Eco Station, are just some of the amazing projects delivered by community groups since the Council launched its Community Climate Fund in 2020.

Check out some of the most recent projects here.

Rock Farm is a six acre sustainable growing project near Washington.

It has recently been awarded £5,000 by the Fund to help it create climate friendly methods of food production, and develop innovative energy and nature conservation strategies, whilst providing healthy food for vulnerable local people.

Waste reuse to improve soil health, rainwater capture, wild food gathering and tree planting to create a food forest are all key aspects of their sustainable work.

Commenting on the initiative, Project Development Manager Ben Szobody said:

“Thanks to the Council’s funding we are now moving quickly to regenerate our depleted farmland, grow more fruit and vegetables sustainably and distribute them to people in real need.”



Rock Farm

One grateful visitor said: “Rock Farm for me is a slice of normality and peace during challenging times and usually with a very tasty outcome.”

Horsham Sports Club has received funding towards converting the flood lighting on its tennis courts from Halide lights to more efficient LED lights. This will reduce their carbon emissions by a massive 61% and will reduce their costs, which they can pass on to the local community and members by giving cheaper access to courts.

Friends of Horsham Park are working with the Council to restore the Park House Sensory Garden which is now 30 years old. Water-wise and peat free planting is at the centre of their climate change project, **Sense the Change**, which was awarded some £2,000 from the Community Climate Fund.

Raised beds will be planted with drought tolerant planting and provide an opportunity to educate residents and visitors on the types of climate friendly planting they can use in their own gardens, which will conserve water and be pollinator friendly to increase biodiversity.

How to find out more and apply

Community Climate Funds must be used for brand new projects, which will last beyond the funding provided by the Council and include a commitment to inform the wider community about the project and encourage others to act.



For more information about the Horsham District Community Climate Fund and application criteria please email community.development@horsham.gov.uk or go to our website www.horsham.gov.uk/communityclimatefund.

www.horsham.gov.uk



How to create a more wildlife-friendly garden



Wilder Horsham District is a five-year partnership between the Council and Sussex Wildlife Trust, working to deliver a Nature Recovery Network for our District.

Whilst the main focus of the Wilder Horsham District project is to work with community groups and landowners, you as individuals are just as key and valuable to helping to develop a Nature Recovery Network.

We wanted to share with you a recent communication we had with Piers, a local Horsham resident, who got in touch asking for ideas on how to create a more wildlife-friendly garden.

Piers creates new habitats

Piers filled in previously abandoned borders with wildflower seeds which have now blossomed into life, providing a great nectar source for pollinating insects and a gorgeous display to admire.

Three raised beds for fruit and vegetables have also been added, and another new habitat – a pond. It has been dug to a maximum depth of 35cm, with two shelves at 12cm and 20cm to create a variety of habitats, plus a shallow section with pebble stones to provide access to drinking water for bees and other insects.

To help provide a home for any invertebrates, spiders, and mini beasts passing through, or newts from the pond, Piers has also introduced stones and small logs for even more habitat variety.

Piers not only transformed his front garden but his previously bare side garden too, planting more plants to provide a haven for insects.

Working towards a better ecological network

The Wilder Horsham District project follows the Lawton Principles, a set of principles detailing how best to create a “coherent and resilient ecological network”. So as a project, we are trying to make areas for nature recovery ‘bigger, better, and more joined up’.

As an individual, it can be easy to feel like you can’t make a difference, but as Piers proves, this couldn’t be further from the truth.

The spaces around our houses or in our gardens may seem small, but if they can provide valuable habitat, they play a major role in helping to achieve the ‘more joined up’ areas for wildlife that are so vital for nature recovery. This is especially true when we live in urban or built-up areas, where corridors and safe spaces for wildlife are needed more than ever.

Piers would be delighted to be put in touch with anyone to have a chat or trade tips. If you would like to be put in touch, please do contact us at wilderhorshamdistrict@sussexwt.org.uk.

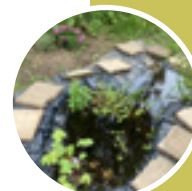


Wilder
Horsham
District



Top tips for a more wildlife friendly garden

- 1. Create a wildlife pond** – arguably the single best thing you can do for wildlife in your garden.
- 2. Create a wildflower meadow** – insects, especially pollinators, are in decline and this can really help.
- 3. Use native plants** – generally native plants are better for wildlife.
- 4. Don't be too tidy** – nature likes it when things are a bit messy! Leave some of your lawn unmown and some piles of rubble or wood around which is particularly good for wildlife.



Horsham District councillors

Billingshurst

Cllr Chris Brown (Conservative)
Telephone: 07711 900578
chris.brown@horsham.gov.uk

Cllr Nigel Jupp (Conservative)
Telephone: 01403 741542
nigel.jupp@horsham.gov.uk

Cllr Kate Rowbottom (Conservative)
Telephone: 01403 741770
kate.rowbottom@horsham.gov.uk

Bramber, Upper Beeding and Woodmancote

Cllr Michael Croker (Green)
Telephone: 01903 813178
michael.croker@horsham.gov.uk

Cllr Roger Noel (Conservative)
Telephone: 01273 494421
roger.noel@horsham.gov.uk

Broadbridge Heath

Cllr Matt Allen (Liberal Democrat)
Telephone: 07783 471311
matthew.allen@horsham.gov.uk

Cllr Louise Potter (Liberal Democrat)
Telephone: 07738 221473
louise.potter@horsham.gov.uk

Colgate and Rusper

Cllr Tony Hogben (Conservative)
Telephone: 07500 808898
tony.hogben@horsham.gov.uk

Cllr Liz Kitchen (Conservative)
Telephone: 01293 871441
elizabeth.kitchen@horsham.gov.uk

Cowfold, Shermanbury and West Grinstead

Cllr Jonathan Chowen (Conservative)
Telephone: 01403 710634
jonathan.chowen@horsham.gov.uk

Cllr Lynn Lambert (Conservative)
Telephone: 07854 042484
lynn.lambert@horsham.gov.uk

Denne

Cllr Ruth Fletcher (Liberal Democrat)
Telephone: 01403 258830
ruth.fletcher@horsham.gov.uk

Cllr Frances Haigh (Liberal Democrat)
Telephone: 01403 253652
frances.haigh@horsham.gov.uk

Cllr Belinda Walters (Liberal Democrat)
Telephone: 07808 779408
belinda.walters@horsham.gov.uk

Forest

Cllr Colin Minto (Liberal Democrat)
Telephone: 07887 480142
colin.minto@horsham.gov.uk

Forest continued

Cllr Jon Olson (Liberal Democrat)
Telephone: 07837 790004
jon.olson@horsham.gov.uk

Cllr David Skipp (Liberal Democrat)
Telephone: 07818 671404
david.skipp@horsham.gov.uk

Henfield

Cllr Mike Morgan (Independent)
Telephone: 01273 492134
mike.morgan@horsham.gov.uk

Cllr Josh Potts (Conservative)
Telephone: 07368 679546
josh.potts@horsham.gov.uk

Holbrook East

Cllr Andrew Baldwin (Conservative)
Telephone: 01403 275156
andrew.baldwin@horsham.gov.uk

Cllr Karen Burgess (Conservative)
Telephone: 01403 273533
karen.burgess@horsham.gov.uk

Holbrook West

Cllr Peter Burgess (Conservative)
Telephone: 01403 273533
peter.burgess@horsham.gov.uk

Cllr Christian Mitchell (Conservative)
Telephone: 07710 402115
christian.mitchell@horsham.gov.uk

Itchingfield, Slinfold and Warnham

Cllr Stuart Ritchie (Conservative)
Telephone: 01403 270988
stuart.ritchie@horsham.gov.uk

Cllr Tricia Youtan (Conservative)
Telephone: 01403 790669
tricia.youtan@horsham.gov.uk

Nuthurst and Lower Beeding

Cllr Toni Bradnum (Conservative)
Telephone: 01403 891181
toni.bradnum@horsham.gov.uk

Pulborough, Coldwaltham and Amberley

Cllr Paul Clarke (Conservative)
Telephone: 01798 875645
paul.clarke@horsham.gov.uk

Cllr Brian Donnelly (Conservative)
Telephone: 01798 874101
brian.donnelly@horsham.gov.uk

Cllr Diana van der Klugt (Conservative)
Telephone: 01798 875663
diana.vanderklugt@horsham.gov.uk

Roffey North

Cllr Tony Bevis (Liberal Democrat)
Telephone: 01403 264894
tony.bevis@horsham.gov.uk

Cllr John Milne (Liberal Democrat)
Telephone: 07939 669435
john.milne@horsham.gov.uk

Roffey South

Cllr Alan Britten (Liberal Democrat)
Telephone: 01403 272226
alan.britten@horsham.gov.uk

Rudgwick

Cllr Richard Landeryou (Conservative)
Telephone: 01403 824154
richard.landeryou@horsham.gov.uk

Southwater North

Cllr Billy Greening (Conservative)
Telephone: 07963 820622
billy.greening@horsham.gov.uk

Cllr Claire Vickers (Conservative)
Telephone: 01403 732094
claire.vickers@horsham.gov.uk

Southwater South and Shipley

Cllr Gordon Lindsay (Conservative)
Telephone: 01403 741577
gordon.lindsay@horsham.gov.uk

Cllr Ian Stannard (Conservative)
Telephone: 01403 250394
ian.stannard@horsham.gov.uk

Steyning and Ashurst

Cllr Tim Lloyd (Conservative)
Telephone: 01903 816969
tim.lloyd@horsham.gov.uk

Cllr Bob Platt (Green)
Telephone: 07876 365715
bob.platt@horsham.gov.uk

Storrington and Washington

Cllr Ray Dawe (Conservative)
Telephone: 07712 463462
ray.dawe@horsham.gov.uk

Cllr Jim Sanson (Conservative)
Telephone: 01903 744658
jim.sanson@horsham.gov.uk

Cllr James Wright (Conservative)
Telephone: 07856 204233
james.wright@horsham.gov.uk

Trafalgar

Cllr Martin Boffey (Liberal Democrat)
Telephone: 07536 185774
martin.boffey@horsham.gov.uk

Cllr Christine Costin (Liberal Democrat)
Telephone: 01403 266165
christine.costin@horsham.gov.uk

West Chiltington, Thakeham and Ashington

Cllr John Blackall (Conservative)
Telephone: 01798 812432
john.blackall@horsham.gov.uk

Cllr Philip Circus (Conservative)
Telephone: 01798 812719
philip.circus@horsham.gov.uk

Cllr Jack Saheid (Conservative)
Telephone: 01798 813007
jack.saheid@horsham.gov.uk

Sign up to receive Our District digitally

It has never been more important for councils to communicate effectively with a broad range of people, from residents and at risk groups to businesses and community organisations.

You can now read Our District magazine online on your computer, tablet or smartphone. The website allows you to keep up to speed with everything that is going on, discover more about our services and share stories with family and friends more easily.

Visit magazine.horsham.gov.uk to read all the past editions.

Sign up to receive Our District straight to your email inbox by visiting magazine.horsham.gov.uk/emailsignup.



Contact us

Community Link

01403 215230

Electoral Services

elections@horsham.gov.uk
01403 215126

Environmental Health

publichealth.licensing@horsham.gov.uk
01403 215641

Housing

Homeless enquiries
housing@horsham.gov.uk

Housing application enquiries

housing.applications@horsham.gov.uk
01403 215204

National Benefit Fraud Hotline

0800 854 4400

Council Tax, business rates and benefits

08081 648610

Licensing

licensing@horsham.gov.uk

Alcohol licensing

01403 215578

Hackney carriage private hire licensing

01403 215471

Parking

parking@horsham.gov.uk
01403 215058

Planning Services

Development Management
General enquiries
planning@horsham.gov.uk
01403 215187

Building Control

General enquiries and helpline
building.control@horsham.gov.uk
01403 215151

Recycling and Bins

Including trade waste, litter, garden waste, cleansing and dog fouling
yoursay@horsham.gov.uk
01403 733144

Leisure facilities

Billingshurst Leisure Centre
01403 787500

Steyning Sports and Swimming Centre
01903 879666

The Bridge Leisure Centre
01403 211311

The Pavilions In The Park
01403 219200

The Capitol, Horsham
01403 750220
www.thecapitolhorsham.com

Horsham Drill Hall
01403 211436

Horsham Park Barn bookings
01403 756088

Horsham Museum & Art Gallery
01403 254959
www.horshammuseum.org

Rookwood Golf Course
01403 252123

Southwater Country Park
01403 731218

Warnham Local Nature Reserve
01403 256890

For all other general enquiries

contact@horsham.gov.uk
01403 215100

Correct at December 2021

Follow us



@HorshamDC

Stay Connected

Sign up to receive updates on topics that are important to you.



www.horsham.gov.uk/stayconnected

THE **ROAR-SOME** CREW ARE **BACK** FOR A **BRAND NEW** ADVENTURE!

FRECKLE PRODUCTIONS AND ROSE THEATRE PRESENT

ZOG

AND THE FLYING DOCTORS

LIVE
ON STAGE



BASED ON THE BOOK BY

JULIA DONALDSON * AXEL SCHEFFLER

MUSIC & LYRICS BY JOE STILGOE • DIRECTED & ADAPTED BY EMMA KILBEY



The Capitol
HORSHAM
THEATRE • CINEMA • CAFE

FRI 18 – SUN 20 MAR

01403 750220 thecapitolhorsham.com