

Our District



Horsham
District
Council

News from Horsham District Council
July 2026

Summer events
.....

Have your say
.....

**Introducing our
Chair's year of
volunteering**

Nymans

National Trust

Are you ready for a **Summer of Play?**

Discover a summer jam-packed with fun at Nymans.

Sat 18 Jul - Fri 4 Sep

Find out what's on at nationaltrust.org.uk/nymans

@NymansNT

Supported by **POKÉMON**

©National Trust 2026 Registered charity no. 205846.
©2026 Pokémon / Nintendo / Creatures / GAME FREAK.

Standen

Try your hand at Circus School, then practise circus skills of your own at Standen.

Sat 4 Jul - Sun 6 Sep

@StandenNT

nationaltrust.org.uk/standen

© National Trust Images / Rebecca Hughes

Please note Pokémon is only at Nymans

Sisters, Eve and Alex love being creative

Where, in your home, could their art gallery go?

Become a Foster Carer and help keep siblings, like Eve and Alex, together.

With West Sussex County Council you'll receive training, ongoing support and up to £32k+* a year (per child).

To discover more about Eve and Alex, scan the QR code or visit fosteringwestsussex.gov.uk/our-children

*Fee dependent on fostering experience, age of child and length of time in your care

Children's names and image have been changed to protect their identity

west sussex county council **FOSTERING WEST SUSSEX**

Summer welcome



As we move into the height of summer, this edition reflects a season full of activity, opportunity and continued progress across the District.

With longer days and warm evenings, we look forward to bringing communities together through a vibrant programme of local events.

Partnership remains at the heart of what we do. In this issue, we highlight the impact of our work with local voluntary organisations, alongside collaboration with public sector partners to support community safety. We also celebrate our ongoing work with our sustainability networks and through initiatives such as Wilder Horsham District.

You'll find the latest Local Plan update, as well as a warm welcome to our new Chair, Councillor Joanne Knowles, who shares her focus on a year centred around volunteering and community engagement. We also include important guidance for both renters and landlords as the new Renters' Rights Act comes into effect.

A strong thread of accessibility runs throughout this edition, from our work with the Snowball app to the latest progress with refurbishments at The Capitol, where improvements are underway to ensure more comfortable and enjoyable visits for all.

I hope this issue keeps you informed and connected to our current work supporting our wonderful communities. Don't miss the latest opportunities to have your say on live and upcoming consultations on pages 8 and 9.

Councillor Martin Boffey
Leader of the Council

STAY CONNECTED



Sign up to receive updates on topics that are important to you at: www.horsham.gov.uk/email-newsletters.

If you have any feedback on this edition, please email us at: communications@horsham.gov.uk.

Cover image: The Gamblers performing at Friday Lates © Cate Dwyer Photography

[f](#) [X](#) [@HorshamDC](#)

Get ready for summer	2
Family fun at Horsham Museum	4
Wardens at the Steyning Festival	5
The Capitol refurb update	6
Thanks a bunch for recycling your food waste	7
Community Governance Review	8
Share your views on road safety	8
Local Plan examination progress	9
Supporting our communities	10
A year of volunteering planned for our new Chair	11
Celebrating local volunteering	11
Do you pay your Council Tax by Direct Debit?	12
Are you selling cakes or other food items from home?	13
You are invited to our Winter Warm Ups	13
Renting is changing	14
Delivering affordable housing	15
Accessible scheme snowballs	16
New Tern Rafts at Warnham Local Nature Reserve	17
Supporting adult wellbeing	18
Reconnecting nature	19
Leading the way in Carbon Literacy	20
Stay independent with our new wrist alarm	21
Does your new project need planning permission?	22
Home improvements	23
Innovative podcast series wins major community award	24
Helping the community save money and natural resources	25
Connect to Work	26
Don't miss the Horsham District Jobs and Skills Fair 2026	26
Council careers	27
Horsham District Councillors	28
Contact us	29



Get ready for a scorching summer

Our **Friday Lates** events have made a welcome return every Friday evening throughout July and August from 6pm to 8pm at the Horsham Carfax Bandstand, wrapping up with the fantastic Dhol Collective on **28 August**.

We are continuing to celebrate local talent with our **Sussex Sounds** performances, which you can enjoy at the Horsham Carfax Bandstand alongside our weekend markets. On **Sunday 30 August**, our much-loved **Sussex Sounds Festival** returns, bringing multiple stages of music with the fantastic markets in Horsham town centre.

Don't miss brilliant **Big Band** performances on the Carfax and Park Podium bandstands across the weekends.

We will be back for **Love Parks Week** from **27 to 31 July** with lots of activities celebrating our fantastic green spaces across the District. Find the line up at: www.horsham.gov.uk/loveparksweek.

Families with younger children can head to our free **Children's Fun Sessions** on the Horsham Park Podium every Tuesday, Wednesday and Thursday at 2pm and 3.15pm during the summer holidays. These 45-minute shows offer traditional entertainment for children to enjoy with their carers.

Other activities in Horsham Park include the extensive children's play area in front of The Pavilions In The Park, as well as the children's maze, but watch out for the dragon!

At **Southwater Country Park**, our beautifully relaxed **Sunset Sessions** continue. Join us from 6pm to 8pm and enjoy live music as the sun sets over the lake, featuring Will Brownlees on **Thursday 30 July** and Ella Ridley on **Thursday 27 August**. Food and drink will be available from the café. These sessions are free to attend, but please bring your own chair or picnic mat.

Visit: www.horsham.gov.uk/events for full listings and inspiration. If you're looking for play parks, sports facilities and outdoor spaces, head to www.horsham.gov.uk/parks-and-countryside.



Left: Dhol Collective at Friday Lates

Below: Acoustic Trio P43 at Sussex Sounds

© Sam Khan Photography



Above: Local market trader

Right: Sussex Six Local Food and Drink Market

© Sam Khan Photography

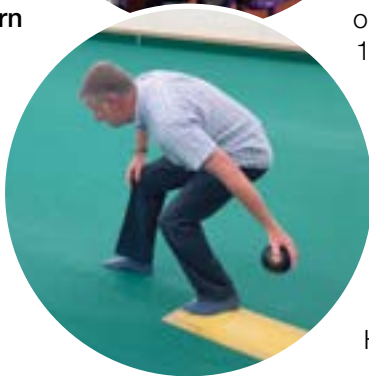
© Sam Khan Photography

For accessible activities, **Wheels for ALL**, our inclusive cycling group, will be hosting a special summer session on the athletics track at The Bridge Leisure Centre on **Wednesday 12 August** from 1.30pm to 3pm.

Find out more at: www.horsham.gov.uk/horsham-wheels-for-all.



A new Monday **Learn to Bowl** course at Horsham District Indoor Bowls Club will run for eight sessions from **5 October to 30 November**, between 12pm and 2pm.



Book your place at: www.horsham.gov.uk/sport-and-leisure/sports-sessions/learn-to-bowl.

Discover fantastic food and drink

Celebrate the arrival of summer by supporting local food and drink producers and the fantastic range of shops, restaurants, pubs and cafés that have made the Sussex Six pledge to sell and serve more Sussex produce. Look out for the logo in windows, online, and at local markets.

Join us at the **Big Nibble** in the Carfax on **6 September** from 10am to 4pm. **Discover Sussex** produce, a live cookery theatre, and plenty of music and entertainment. You can also enjoy the second Tap & Vine Takeover event that weekend organised by Your Horsham.

Explore our illustrated leaflets showcasing exceptional local food and drink.

Use our Drink Producers of Horsham District leaflet and map to discover local wine, beer, cider, spirits and soft drinks, as well as tours and experiences: www.horsham.gov.uk/drinks.

Scan this QR code and discover flourishing farm shops, cafés, restaurants, taprooms and more with our Sussex Six leaflet: www.horsham.gov.uk/_data/assets/pdf_file/0005/150296/Sussex-Six-2025-A3-digital-download.pdf.



Wardens events

Our Neighbourhood Wardens run a varied programme of activities designed to combat social isolation and bring communities together. These include summer fun days, games groups, community cafés and activities during both term time and school holidays.

Visit www.horsham.gov.uk/wardens-events to find out what's on near you.



Family fun at Horsham Museum

Our school holiday craft sessions return from **Tuesday 21 July** with **Making History** where each week's activities will be inspired by a Horsham resident, past or present. The crafts are held between 10.30am and 3pm, Tuesday to Friday with themes including writers, scientists and even dragons!

Museum of Time:

An Astrophotography Trail

Space and history collide in our free trail exhibition featuring artworks by Horsham based astrophotographer, Claire Bradshaw (Fellow of the Royal Astronomical Society). Using specialist equipment, Claire produces fascinating and highly detailed photographs of stars and celestial objects in space. Each artwork in the trail will be displayed alongside an object from the Museum's own collection, from the same time as the light-year distance of each object featured. The artefacts will represent Horsham's history at the moment that the light captured in each photograph left its place of origin. The trail is open from **now until Saturday 29 August**.

A special Eclipse-nic event will be held (clear skies permitting) on **Wednesday 12 August** to experience the partial eclipse of the sun. Claire Bradshaw and other astronomical experts will gather in Horsham Park's Human Nature Garden for a bring your own picnic to celebrate the partial eclipse that will take place that evening. The event will take place from 5pm to 7.30pm.

Museum Lates

The **Museum Lates** are back again in 2026.

Friday 24 July will see Brighton and Hove based trio The Witchcraft and Vagrancy Act beguiling audiences with their spooky traditional folk music, before the Betty Accorsi Duo return on **Friday 21 August** to entertain with a jazz performance. At each event the Museum will be fully open until 8pm with live music and a licensed bar in the garden from 6pm.

The Young Curators' Club: The Great Fire of London

This summer, visitors can enjoy a mini exhibition which has been curated by Year 2 students from St Mary's CE Primary School. Learn more about their chosen topic, The Great Fire of London, as well as marvel at the beautiful artworks and artefacts created by the talented young curators. **The Young Curators' Club** is open from now until **Saturday 29 August**.

MORE INFORMATION



The Museum is open **Tuesday to Saturday**, 10am to 4pm and all days across bank holiday weekends. Further details on all events can be found on the Museum's website: www.horshammuseum.com.

ADVERTISEMENT

AMBERLEY MUSEUM
The Home of Hands-on Heritage

50% OFF

Summer Holiday Activities

HALF PRICE ENTRY
Use Code: **100YEARS** at checkout*

Family Trail | Craft Activities
Bus & Train rides | Interactive exhibits and more!

Book your tickets at: amberleymuseum.co.uk

*Offer valid until **30th August 2026**.
Not valid on special event days.



Wardens deliver a day of inclusivity at the Steyning Festival



NEIGHBOURHOOD
WARDENS

For the second year, our Steyning, Bramber and Upper Beeding Wardens delivered an unforgettable day of inclusive activities as part of the ten-day 2026 Steyning Festival.

Hosted at Fletchers Croft, Alison and John coordinated a wide range of activities designed to bring the community together. They were also on hand to spread the word about the Neighbourhood Wardens schemes and the variety of support and events they run throughout the year. Their work helps tackle isolation, encourages community cohesion, and addresses local issues before they develop.

Our Wardens brought together stands from many of the partners they regularly work alongside.

Tons of Sound offered interactive music experiences suitable for all ages. Using professional DJ equipment, participants were able to try their hand at switching, mixing, and music creation.

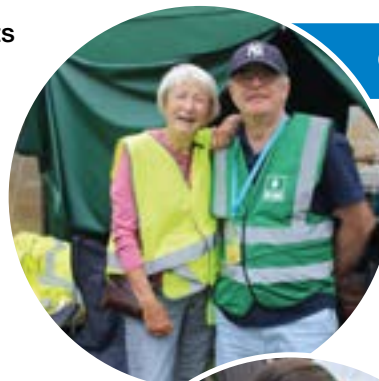
Horsham Sports Services ran archery taster sessions.

Fitness instructors from **Steyning Leisure Centre** provided fun challenges with prizes to be won.

West Sussex County Council Early Help Service brought an array of craft and play activities for families.

We were also joined by **First Responders, West Sussex Fire & Rescue Service,** and **Sussex Police.**

And of course, **Boogie Bouncers** bouncy castles added to the fun for everyone.



GET IN TOUCH



If you'd like to get in touch with Steyning, Bramber and Upper Beeding Wardens, Alison and John, please email: SBUB.wardens@horsham.gov.uk.

To find out about upcoming Warden events and activities, from board-game groups and Autism and SEN play sessions to parent support groups, community cafés, and pop-up surgeries, please visit: www.horsham.gov.uk/wardensevents.

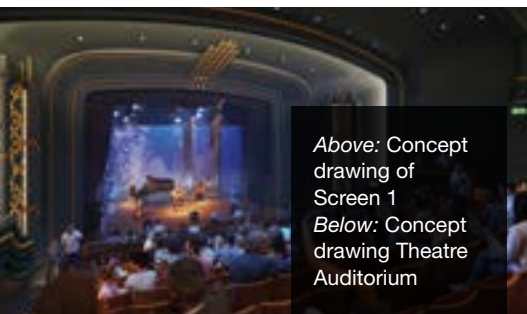
For more information on Neighbourhood Wardens and contact details for all schemes operating across the District, please visit: www.horsham.gov.uk/wardens.

The Capitol

H O R S H A M



Refurb update



Above: Concept drawing of Screen 1
Below: Concept drawing Theatre Auditorium

Over the last few months, significant progress has been made, with improvements focused on comfort, accessibility and visitor experience.

In the Theatre Auditorium, a full programme of repairs and redecoration has refreshed the walls and ceilings with rich dark green and gold accents. Leading industry seating providers, Kirwin & Simpson, will be installing dramatic red theatre seating, with a flexible system allowing more wheelchair users to sit together with their friends and family.

The cinema facilities are being upgraded, with notable progress in Screen 1. Newly installed flooring will allow a more efficient and flexible seating layout, improving both capacity for wheelchair users and overall comfort for filmgoers. A display of the new cinema seat at our temporary Box Office in Swan Walk Shopping Centre was met with a very positive response – and a lot of excitement around the cupholders! Customers were also keen to see the calming grey and blue colour schemes.

Behind the scenes: supporting infrastructure has also been addressed, including essential plumbing and heating upgrades. The replacement of end-of-life boiler systems marks a significant step forward in improving energy efficiency and reliability.

On the ground floor, works have progressed over the last few months, the installation of new partition frameworks alongside electrical and mechanical works, have laid the foundation for more modernised, high-quality toilet facilities with more cubicles to help reduce those interval queues.

Enhanced accessibility

A key highlight of the refurbishment's enhanced accessibility features include a dedicated Changing Places unit – a specialist provision designed to support visitors with complex needs. The facility will offer generous space for wheelchair users, a ceiling track hoist system, a height-adjustable adult-sized changing bench, a wash basin, a handheld shower and non-slip flooring.

“A game changer for families”
Autism Support Crawley

Local organisation Autism Support Crawley described this addition as: “a game changer for families” reflecting the significant positive impact the new facility is expected to have on inclusivity within the community’s night-time economy.

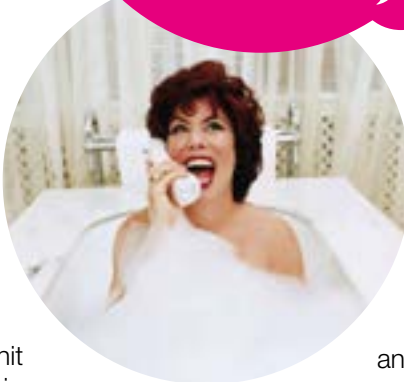
The Capitol’s Venue Manager, Matthew Effemey said: “We are committed to ensuring our space is welcoming and accessible to everyone. These improvements are not only about upgrading our building, but about empowering all visitors to enjoy what we offer in comfort and confidence.”

The upcoming programme

Whilst works continue, preparations are underway for our pantomime Dick Whittington, which will be the first event to be staged after the Refurb project is complete.

“We are committed to ensuring our space is welcoming and accessible to everyone”

Dancer, choreographer and TV star Louie Spence will be joined by UK Panto award nominee, Will Jennings, who had audiences rolling in the aisles as Guy of Gisbourne in Robin Hood. This year, Will takes on the villainous role of King Rat, but audiences can still expect to enjoy his popular comedy antics alongside any cunning conniving.



Other recent programme announcements for Spring 2027 include the Olivier award winning Pride & Prejudice (sort of...), Ruby Wax: Absolutely Famous and The Tiger Who Came to Tea.

STAY IN THE LOOP

Be sure to check out www.thecapitolhorsham.com for all the latest news.

Thanks a bunch for recycling your food waste

Across Horsham District, residents are already making a big difference by recycling their food waste.

Since the programme launched in March, an impressive **1,000 tonnes** of food waste has been collected. That's around 20 tonnes a day, or approximately 14kg a household. To bring this to life, it's the same weight as **666 cars, 80 double-decker buses, or 167 African elephants.**

We want to thank every household playing their part in this success.

With an estimated 4.4 million tonnes of edible food waste being thrown away by UK households each year, it's really important that every small bit of food waste is recycled. No amount is too small and food waste bins will be emptied no matter how little they contain.

Thanks to residents' efforts, food waste is being put to good use. It is sent to an Anaerobic Digestion Plant, operated on behalf of West Sussex County Council, where it is transformed into renewable energy and a nutrient-rich fertiliser, which returns goodness to the soil locally.

Keep it going, it's quick and easy
With weekly collections now rolled out across the District, it's easy to participate. Food waste bins are collected every week on the same day as your recycling or general waste bin, simply place your kerbside bin out by 6am.

Most households are already getting into the habit, and keeping your bin out on time helps collections run smoothly for everyone.

NEVER MISS BIN DAY



For an extra reminder to put your bin out, download our handy app at: www.horsham.gov.uk/mobileapp or scan the QR code for all the links you need.

By continuing to recycle food waste each week, we are reducing waste, generating clean energy, and supporting local agriculture.

ADVERTISEMENT

Horsham, You're Invited

Transform Elite
LONGEVITY | BEAUTY | SKIN

THE OFFICIAL LAUNCH OF

TRANSFORM ELITE

FRIDAY 21ST AUGUST 2026

HORSHAM'S NEW DESTINATION FOR LONGEVITY, BEAUTY AND SKIN.

Join us for a special launch event and discover Transform Elite – a private membership experience designed to help you look better, feel stronger and live younger.

MEET THE TEAM • EXPLORE THE VISION • DISCOVER THE MEMBERSHIP

LONGEVITY
Live younger for longer

BEAUTY
Radiant skin inside & out

SKIN
Healthy, glowing, you

CONFIDENCE
Feel strong, be empowered

SCAN TO SAVE YOUR PLACE

LIMITED PLACES AVAILABLE

Live Younger.
Live Elite.

TRANSFORM HEALTH AND BEAUTY CLINIC
42 Carfax, Horsham, RH12 1EQ

thetransformelite.com

+44 7480 708294



“have your say”

Scan the QR code and sign up at: www.horsham.gov.uk/email-newsletters to receive our Latest News in your inbox and be notified about all our consultations.

Community Governance Review

Look out for our **Community Governance Review second consultation** later this summer.

You may have seen that we began a District-wide Community Governance Review in February. This is a process councils carry out to make sure people can comment on and shape how their local communities are represented.

The aim is to ensure that parish arrangements remain effective and efficient and reflect the needs and identity of your local communities. This process gives you the opportunity to share your views.

First consultation

The first consultation ran from **9 May to 22 June** and asked for comments on the current arrangements. We are grateful to everyone who took the time to respond.

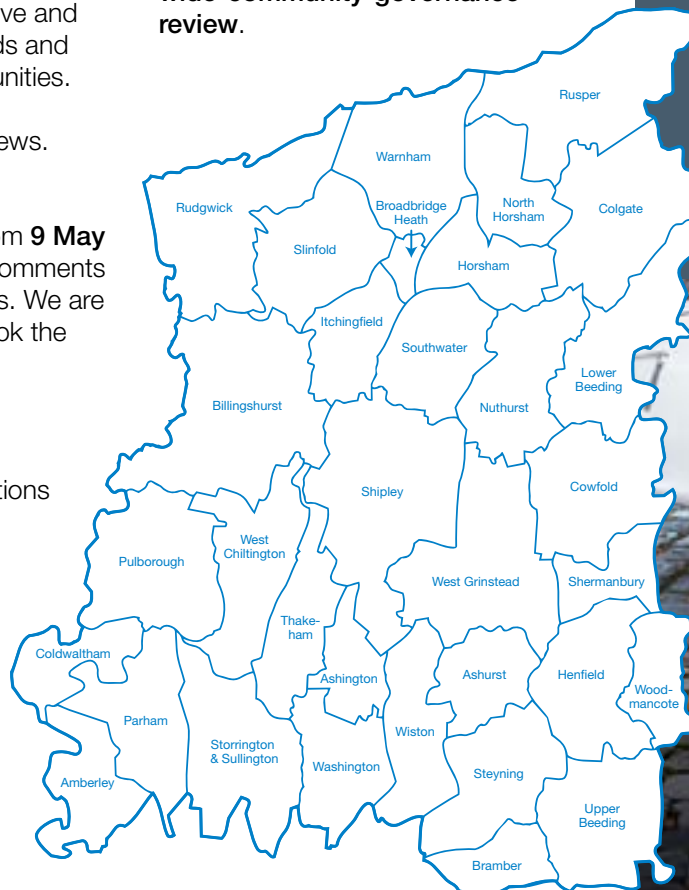
Using this feedback, the Governance Committee will approve draft recommendations at their meeting on **22 July**. A second consultation on these will take place later this summer. The Committee will then review all comments before agreeing the final recommendations.

Any proposed changes will be presented to Full Council, which will likely take effect from **1 April 2027**.

GET INVOLVED

Don't miss your chance to comment. Our second consultation will launch later this summer.

You can find out more at: www.horsham.gov.uk/council-democracy-and-elections/district-wide-community-governance-review.



Share your views on road safety

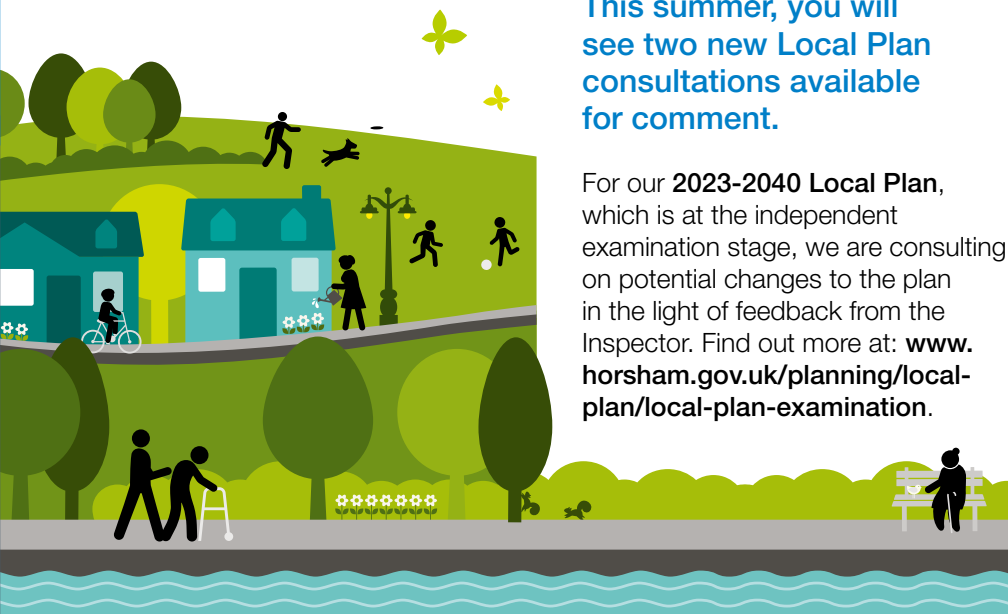
Horsham District Community Safety Partnership has Road Safety as a priority for 2026 to 2027 and would like to hear from residents about any road safety concerns they may have.

Please take a few minutes to complete the short survey, which is open until the end of July at: www.horsham.gov.uk/consultations.



Horsham District Community Safety Partnership

Comment on our summer Local Plan consultations



This summer, you will see two new Local Plan consultations available for comment.

For our **2023-2040 Local Plan**, which is at the independent examination stage, we are consulting on potential changes to the plan in the light of feedback from the Inspector. Find out more at: www.horsham.gov.uk/planning/local-plan/local-plan-examination.

In parallel, new government planning reforms mean we are required to commence preparation for the next **Horsham District 2045 Local Plan**.

An initial scoping consultation for this will run from **30 June to 28 July**. The scoping consultation will ask what this new plan should cover, prioritise and deliver for the District and how you would like to be consulted going forwards. From **30 June to 25 August** a form will also be available to submit suggestions for potential sites for consideration. Find out more at: www.horsham.gov.uk/planning/local-plan/Horsham-District-2045.

You can comment on one or both consultations. If you need help accessing documents or alternative formats, please contact us at: planning@horsham.gov.uk.

ADVERTISEMENT

ATHLETIC TRACK

NOW OPEN!



400m, six-lane all-weather running track

Ancillary athletic facilities

Beginner coaching & junior activities

Learn More



BluecoatSports
Christ's Hospital

01403 247572

info@bluecoatsports.co.uk

www.bluecoatsports.co.uk

Christ's Hospital, Horsham, West Sussex, RH13 0YB

Working together to support our communities

We know that finding support when you need it can be hard, so our Communities team works closely with a wide and diverse range of local organisations, from small volunteer-led groups to larger charities and partners to enable residents to find the help and services they need.

By working in partnership, it helps us respond to local challenges, share knowledge, and make the most of the skills, passion and expertise that exist within our communities. We want to enable our residents to reach the support and help they need before issues escalate, so we help ensure there are strong support sector networks.

Building local networks

A key part of our work focuses on bringing people together. We regularly host and support network meetings that connect organisations, community leaders and key voices. These meetings provide space to share insights, identify growing needs and work collaboratively on solutions that benefit residents.

We work with organisations that receive council funding, for example, Age UK, Horsham Matters, Citizens Advice, as well as many others.

We offer access to training opportunities, guidance and shared learning, to help organisations build capacity and strengthen their impact.

Creating opportunities to connect

We actively look for opportunities to bring organisations together at our public-facing events, giving residents the chance to meet service providers directly. An example of this is our **Winter Warm Up** events in October. These free activity taster days are designed for those aged 50 and over, to find out more about the fantastic facilities, groups and classes available locally and also offer a vibrant marketplace of local support organisations in an informal setting. Find out more on page 13.

For those looking online, we have a local service directory at: www.horsham.gov.uk/community/community-support which provides a simple way to find information about local organisations and the services they offer, helping residents connect with the right support quickly and easily.

Supporting residents through partnership

All of this work plays a vital role in supporting our residents whether through advice services, community activities, health and wellbeing support, cost-of-living help or social connection. By working with a broad range of organisations, we help foster a sector that is able to respond flexibly to local needs and ensure support is inclusive, accessible and rooted in our communities.



GET INVOLVED



If you're part of a local organisation and would like to stay informed about opportunities, news and support, you can sign up to our newsletter to receive regular updates. Subscribe at: www.horsham.gov.uk/email-newsletters.

Find out about training opportunities at: www.horsham.gov.uk/voluntary-sector-support/events-and-training.





“ Thanks to the recent funding, the Pantry has been able to expand both its reach and its volunteer base ”

Celebrating local volunteering

A year of volunteering planned by our new Chair

We are delighted to welcome the new Chair of Horsham District Council, Councillor Joanne Knowles, into the role for 2026 to 2027.

Joanne has chosen volunteering as the core civic theme for her year in office. This focus recognises the vital role that volunteers play in our communities. Volunteering is a fantastic opportunity to build experience, skills and confidence and Joanne is particularly keen to promote volunteering for young people.

FIND OUT MORE  

You can find out more about the work of the Chair at: www.horsham.gov.uk/chairman.

Our Chair attends many local events. If you have a charity, community group, or run a service for the residents of the District and have an event that you would like Joanne to attend, please contact chairman@horsham.gov.uk.

Horsham District is home to a vibrant array of voluntary groups who bring people together, support those in need, and help build stronger, more connected communities.

Over the past two years, we have supported this work through a dedicated Volunteer Support Project, funded by the UK Government's Shared Prosperity Fund. The project was designed to help local groups attract, support and retain volunteers, combining grant funding with practical training opportunities.

Since 2024, 33 grants have been awarded to local voluntary groups, supporting initiatives such as volunteer recruitment campaigns, training, community events and outreach. As a result, more than 1,600 volunteering opportunities have been created or supported across the District.

Local impact

The Pulborough Pantry received a grant to expand its community impact reducing food waste and providing essential food and hygiene items to local families in need.

They said:

“Thanks to the recent funding, the Pantry has been able to expand both its reach and its volunteer base. The grant has supported recruitment efforts through local events and advertising, covering the costs needed to attract new volunteers. It also contributes to continuous vital volunteer training.”

Training sessions

Alongside this, a programme of Volunteer Support Training sessions has helped both volunteers and volunteer managers develop their skills. Covering topics such as volunteer recruitment, good practice in volunteer management and volunteer wellbeing, the sessions have supported over 180 volunteers.

MORE INFORMATION 

The Council's Voluntary Sector Support team remains committed to helping local groups thrive, offering ongoing guidance, resources and opportunities to connect.

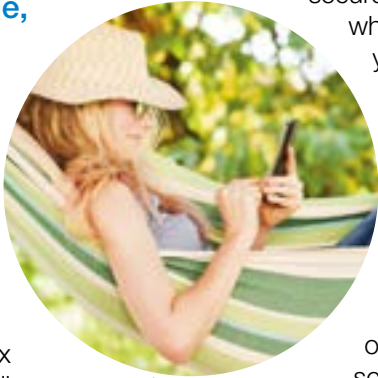
Stay up to date by signing up to the Council's Voluntary Sector Support e-newsletter here: www.horsham.gov.uk/voluntary-sector-support.

Do you pay your Council Tax by Direct Debit?

Most residents already do. In fact, 79% pay this way because it's simple, secure and takes the hassle out of remembering monthly payments.

Schedule your payment date

Paying by Direct Debit means your Council Tax is collected automatically on a date you choose. Payments are protected by the Direct Debit Guarantee, helping you avoid late or missed payments.



You can also choose to manage your Council Tax through a secure online account, where you can view your bill, check your balance and go paperless if you wish.

Set up your account today

Set up Direct Debit or an online account by scanning the QR code or visiting: www.horsham.gov.uk/council-tax.



ADVERTISEMENT

DID YOU KNOW?

Council Tax Support



Council Tax Support, discounts and exemptions are available to help people facing financial hardship to pay their Council Tax. You could be eligible if you have a low income or claim benefits. There are also discounts that may apply to you or someone you know, for example if you are the only adult in a property, are a carer or in education.

FURTHER INFO



Find out more at: www.horsham.gov.uk/council-tax.

KITCHENS · BEDROOMS · HOME STUDIES



Explore more customer projects

Holmewood interiors

KITCHEN & BEDROOM SPECIALISTS

t: 01403 254090 e: info@holmewoodinteriors.co.uk www.holmewoodinteriors.co.uk

est. 2017 HORSHAM

You are invited to our Winter Warm Ups

Following the success of our free activity days in 2025, we're delighted to invite you to our 2026 Winter Warm Ups.

Designed especially for those aged 50 and over (although everyone is welcome), there will be a full programme of free fun activities to try, including some self-care opportunities. A community marketplace will showcase support available from local organisations offering help with income maximisation, health and wellbeing, keeping safe, and much more.

We are also running a Winter Warm Up Fringe programme this year, promoting the rich array of activities on offer, week in and week out, at local venues across our District – there's bound to be something near for you to try!

SAVE THE DATE



Wednesday 14 October 2026 at The Bridge Leisure Centre

Thursday 15 October 2026 at Chanctonbury Leisure Centre.

Discover the full programme of activities and fringe events as well as transport options at: www.horsham.gov.uk/community/Winter-Warm-Ups.

We look forward to welcoming you!

We organise Winter Warm Ups in partnership with local businesses, statutory organisations and voluntary sector partners.



Are you selling cakes or other food items from home?

The rise of online marketplace services that allow direct selling of items online has become a valuable resource for many looking to earn money flexibly from home or to turn their hobbies into paying work.

However, if the products you are making or selling online are food or drink for other people, then it is likely that your activity will be legally considered as a food business.

It has become common for individuals to sell food products online through sites like Facebook Marketplace, Gumtree and Nextdoor, although it is believed that many do so without understanding the legal requirements surrounding the supply of food to the public, including the checks that councils do to make sure that the food and drink is safe to eat.

How to register your business

In the UK, anyone producing, storing or distributing food to the public (generally meaning anyone who

is not your immediate family or friends) is required to register with their local authority. This is a straightforward process that does not involve any cost, and it can be done by completing a short form online at: <https://register.food.gov.uk>.

Following registration of a local business, our food safety officers will contact you to offer advice about food safety specific to your food and undertake simple checks to ensure that it is being handled hygienically.

Buy with confidence

You can ask a seller to see their food hygiene rating or search for them on the online register at: <https://ratings.food.gov.uk>.

FURTHER INFO



Further information about registration and ensuring that you are conducting your online food business within the law can be found at www.food.gov.uk/business-guidance/starting-a-food-business-from-your-home; or by contacting our Environment Health and Licensing team at: ehl@horsham.gov.uk or by phone on: 01403 215641.

Renting is changing

What the new Renters' Rights Act means for you.

From 1 May 2026, new national legislation called The Renters' Rights Act came into effect. The Act is designed to make renting fairer, safer and more secure, while still allowing landlords to manage their properties responsibly.

Whether you rent your home or let one out, here's a guide to the changes.

The Renters' Rights Act replaces the old system of fixed-term tenancies and 'no-fault' evictions with a simpler, more balanced approach for both renters and landlords. The changes apply to most private rented homes including for new and existing tenants from 1 May 2026.



What this means for renters

More security and peace of mind

- Removing 'no-fault' evictions means that landlords will no longer be able to end a tenancy without a specific legal reason
- All tenancies will become open-ended (rolling) tenancies, so there's no fixed end date
- Renters will be able to stay in their home for as long as they want, provided they meet the terms of their tenancy.

Flexibility if things change

- Renters can end their tenancy at any time with two months' notice, making it easier to move for work, family or personal reasons.

Fairer renting rules

- Rent increases are limited to once a year, and tenants can challenge increases that seem higher than market rates
- Rental bidding wars banned – landlords must stick to the advertised rent
- Landlords can only ask for one month's rent upfront
- It is now illegal to refuse tenants simply because they have children or receive benefits
- Renters have the right to request a pet, which landlords cannot unreasonably refuse.

What this means for landlords

Clarity and consistency

Landlords can still regain possession of their property for legitimate reasons, including:

- Selling the property
- Moving in themselves or close family
- Serious rent arrears or antisocial behaviour

These reasons are known as "possession grounds" and must be clearly justified. This ensures evictions are fair, transparent and lawful for everyone.

A simpler tenancy system

- Fixed-term tenancies are replaced by a single, rolling tenancy model
- Existing agreements automatically convert, there is no need to issue new contracts, but landlords must provide information to existing tenants on the changes.

Support for good landlords

The Act is designed to support responsible landlords by creating a level playing field that tackles poor practice and rewards those who maintain safe, well-managed homes.

What we are doing

The Renters' Rights Act gives councils stronger powers and clearer duties to improve standards in the private rented sector. We will:

- Provide clear advice and guidance to renters and landlords
- Work proactively with landlords to ensure homes are safe, well-maintained and legally compliant

- Investigate complaints relating to unlawful eviction, disrepair or unfair renting practices
- Take enforcement action where serious breaches are found.

Our approach is focused on early support and education, stepping in with enforcement when necessary.

Looking ahead

Later in 2026, further improvements will be introduced, including:

- A national landlord and property database
- A Private Rented Sector Ombudsman, offering a quicker and easier way to resolve disputes without going to court.

We will share more information on these and future changes including Awaab's Law and the Decent Homes Standard which will be applied to the private rented sector

FIND OUT MORE



If you rent a home or let a property and want to understand how the changes affect you please visit: www.horsham.gov.uk/environmental-health/Renters-Rights-Act or find the Government guidance at: <https://housinghub.campaign.gov.uk>.



 **Renting is**
changing

Delivering affordable housing

Our forward-looking Housing and Homelessness Strategy (2026–2030) places a strong emphasis on delivering more affordable homes that meet the needs of communities across the District.

This will help reduce reliance on temporary accommodation and play a key role in preventing homelessness.

Collaboration on rural housing

In partnership with Saxon Weald, we are set to deliver new social rented homes in Cowfold. The new development will provide a total of eight homes, comprising four one-bedroom and four two-bedroom properties, which will be available to rent for local people on the housing register.

Through this close partnership, and with the support of grant funding from Section 106 development contributions, we are significantly increasing the availability of genuinely affordable social rented housing across the District, ensuring homes remain accessible to those in greatest need.

Keeping social housing stock available

Our continued collaboration with Saxon Weald to protect and

maintain affordable social housing is delivering strong results.

Over the past two years, we have provided grant funding to help repair and modernise **22 homes** and keep them available for tenants. This includes **16 units** for social rent – providing lower-cost accommodation for households which wouldn't have been achieved without our funding.

Dukes Square development to create accessible homes

On 25 March, we approved funding for the development of new affordable homes at Dukes Square in central Horsham.

The scheme will deliver nine properties, including two homes with enhanced accessibility features for people living with disabilities. These homes will provide much-needed affordable accommodation for local residents on the Housing Register.

The Dukes Square development forms a key objective within our Annual Plan.

FIND OUT MORE



You can read about our Housing Strategy at: www.horsham.gov.uk/housing/homes-for-tomorrow-housing-strategy and our 2026 to 2027 Annual Plan at: www.horsham.gov.uk/councilplan.

Funding approved for Dukes Square development



Accessible Horsham District scheme snowballs



“ Having a comprehensive and consistent picture of accessibility can make a real difference ”

Have you heard of the Snowball accessibility app?

Dragon’s Den viewers may recognise this free-to-use app, which helps people find accessible venues such as restaurants, cafés, bars and other local businesses. Snowball supports users to plan enjoyable, stress-free visits by providing clear, practical accessibility information in advance.

Thanks to the support of our Enterprise team, the app is going from strength to strength locally. Many businesses across Horsham District have recently joined, helping to build a clearer picture of how disability-friendly our high streets really are.

Mapping our great local businesses

Enterprise team member Simon has been visiting businesses to support them with their Snowball accessibility assessments. These reports give visitors a helpful overview of what each venue offers, as well as how close it is to other local facilities. Simon has already assessed most

cafés across our market towns and villages as well as ensuring Council-owned venues and facilities are included.

We recently caught up with him and talked about rolling out the scheme in Henfield where a local project had already brought together community members to share access information. By working collaboratively, we helped align many of these venues with the Snowball app, making that information easier to find for visitors who have additional access or sensory needs.

Simon commented:

“The businesses I’ve visited have been fantastic. Having a comprehensive and consistent picture of accessibility can make a real difference for residents and visitors alike. Many businesses have also benefited from simple ‘quick win’ suggestions identified during assessments, such as installing ramps or providing staff training to help support customers with hidden or visible needs – changes that can help them welcome even more customers with confidence.”

Learning from personal experience

We were also pleased to speak with Leah, a local resident living with a chronic

illness who reached out to us last year. Her experience and insights helped to launch this project. She explained how difficult it can be to plan trips out:

“Often it’s not just that places aren’t accessible, it’s that the information isn’t available beforehand, which makes it hard to judge whether a visit will be manageable.”

This is not an isolated issue. In parts of the District, some 16-17% of residents identify as disabled, with a further 7-9% reporting long-term health conditions. When accessibility information is missing or hard to find, residents can feel excluded and businesses can miss the opportunity to serve customers who want to support them.

Making access information easy to find

This initiative helps address that challenge by giving people one place to find clear, reliable venue information before they visit. Snowball includes accessibility and sensory ratings, reviews, maps and details of facilities, helping people to plan with confidence.

We’re also proud that our council-owned venues are now displaying their accessibility window stickers and certificates, showing their commitment to being inclusive and welcoming spaces.

Level up your days out

You can download the free Snowball app for iPhone and Android here: <https://company.snowball.community>.

Get your business on the map

If you’re a local business owner and would like to speak to the team about joining the app or arranging an accessibility visit, please contact: **business.support@horsham.gov.uk**.



New Tern Rafts at Warnham Local Nature Reserve



© Paul Shergold

We're delighted to share that a brand-new Tern Raft has been launched at the Reserve, providing a larger and improved nesting area for Common Terns.

The raft was supplied and installed by Green Future Building, with fantastic support from our Countryside Wardens.

A huge thank you to the Friends of Warnham Local Nature Reserve, whose generous funding made this conservation project possible. We're excited to see how our Common Terns make use of their new home this season.



© Paul Shergold

Sharing our knowledge

Did you know our Parks and Countryside team regularly share their expertise with tree walks, bat walks and bird ringing sessions? Places are limited, and booking ahead is essential.

Our next free bookable **Guided Bat Walks** are running at **Southwater Country Park** on **19 August** and **16 September**. Come with us and find out more about these amazing mammals.

Find out more at: www.horsham.gov.uk/parks-and-countryside/southwater-country-park/events-in-southwater-country-park.

Join our Countryside Wardens for a practical demonstration of **Bird Ringing at Warnham Local Nature Reserve** on **13 August**. Watch and learn at close quarters at an early morning session. There is a small fee for bird ringing sessions.

Find out more at: www.horsham.gov.uk/parks-and-countryside/warnham-local-nature-reserve/events-at-warnham-local-nature-reserve.

If you have missed out on these, we plan to host more events including our popular **Tree Walks** in the autumn. To be the first to know dates, times and booking info, sign up for our Parks and Countryside newsletter at: www.horsham.gov.uk/email-newsletters.

Improvements to play areas

As part of our continuous programme of upgrades to play areas across the District, we have been progressing improvements at Parbrook Play Area in Billingshurst (between Berrall Way and Stane Street).

New play equipment includes a thick rope Snake Swing which allows for group play, a zip wire for speedy rides, sheltered seating and a refresh of the gates and safety surfacing.

We expect the park to be ready for play in the autumn.

Read more at: www.horsham.gov.uk/parks-and-countryside/play-areas/parbrook-play-area.



© Goldcrest

Fields in Trust protection for Horsham Park

Horsham's much-loved Horsham Park is set to be protected for future generations to enjoy after being designated a 'Field in Trust'. The park will be protected in perpetuity in a legal agreement between Horsham District Council and the charity, Fields in Trust.

Read more at: www.horsham.gov.uk/news/2026/03/council-set-to-secure-permanent-protection-for-horsham-park.



Supporting adult wellbeing at every stage of life

Our free wellbeing services are here to support adults of all ages.

We offer in person support for weight management, alcohol reduction, getting active, stopping smoking, nutrition and general lifestyle advice.

In the past, many people tended to seek support in their mid 30s or later, often to help manage health concerns or navigate life changes. We're now seeing younger adults accessing support and information much earlier.

This shift reflects a growing awareness that looking after your wellbeing isn't something to put off until later in life.

Wellbeing MOTs

Wellbeing MOTs are often the first way people engage with our service, offering a supportive opportunity to reflect on current health and lifestyle. This 1-2-1 appointment involves stepping onto body composition scales, a blood pressure check and conversation about your overall health and lifestyle.

What clients gain:

- Clear results of current body composition, including hydration, fat %, bone and muscle mass
- Blood pressure reading with guidance on how to manage or improve this
- Practical and realistic guidance on general wellbeing including nutrition.

“It really showed me how important it is to think about your health at any age”

“Since my first appointment, I've taken up running and walking more to improve my muscle mass and bone density, and I've since completed another Wellbeing MOT to check my progress. It really showed me how important it is to think about your health at any age.”

“The session was inclusive and helped me understand the different indicators of wellbeing”

Taking the First Step

Taking positive steps early on can make a real difference to health, happiness, and quality of life at every age.

If you're aged **18 or over** and thinking about how your lifestyle is impacting your wellbeing, our services are here to help.

With flexible appointment options, our wellbeing services are designed to meet adults where they are at any age.

FIND OUT MORE



You can find further information at:
www.horsham.gov.uk/community/health-and-wellbeing.





Wilder
Horsham
District

Reconnecting nature

Wilder Horsham District (WHD) is a partnership between Sussex Wildlife Trust and Horsham District Council.

Established in 2020, it aims to restore wildlife habitats and reconnect the landscape. The small team supports coordinated action across multiple sites.

A focus on Pulborough to Storrington

One of WHD's key focus areas runs between Pulborough and Storrington. This is a rich and varied landscape shaped by the Arun and Rother rivers, along with smaller watercourses such as the Stor and Chilt. Wetlands, heathland, farmland and woodland come together here, linking important nature reserves in the Arun Valley floodplain with the South Downs.

The area has been prioritised because of its strong potential for nature recovery and the high level of engagement from local landowners.

What has been achieved so far

WHD has supported a range of practical actions across the area. These include working with the National Trust at Sullington to restore heathland, lay hedgerows and plant

an orchard, helping to strengthen links with nearby sites such as our own Sandgate Park.

Efforts have also focused on tackling invasive Himalayan Balsam (pictured right) along local watercourses, protecting native plants and reducing riverbank erosion.

In the past year, the team has made 23 site visits to provide advice including on conservation grazing, as well as creating and managing hedgerows, ponds, scrapes and woodland. Many of these sites form part of wider initiatives such as the Weald to Waves corridor and the Lost Woods of the Low Weald, further strengthening connections across the landscape.

Community projects have also been supported through **Nature Recovery Awards**. Funding has helped install almost 200 nesting boxes for swifts, swallows and house martins, alongside projects for barn owls, kingfishers and heathland and pond restoration.

Why this work matters

Nature cannot thrive in isolation.

By reconnecting habitats, wildlife has the space it needs to move, adapt and survive in a changing environment.

These nature corridors also support people by improving flood resilience, air and water quality, and pollination, while creating healthier, more attractive places to live and work.

Looking ahead

The Pulborough to Storrington corridor shows how local action can contribute to wider landscape scale change. The reach of the project in this area has already expanded beyond the core area into nearby communities such as Wiston, Washington and Ashington.

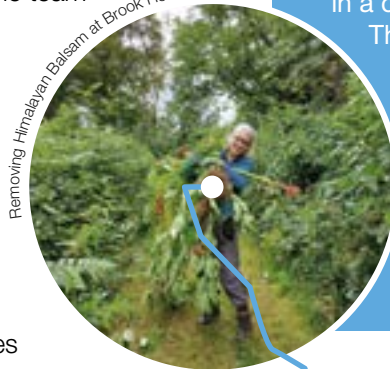
By continuing to build partnerships and support landowners, WHD aims to extend this network further, creating a more resilient and connected natural environment for the future.

FIND OUT MORE



To learn more about Wilder Horsham District's work and how you can get involved, please visit: www.horsham.gov.uk/wilderhorshamdistrict.

Removing Himalayan Balsam at Brook House Farm



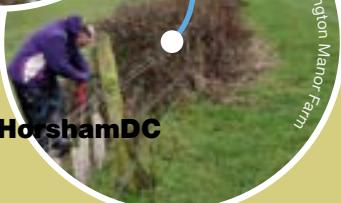
Installing a Swift box in Storrington



Restoring heathland at Warren Hill



Hedgerow work on Sullington Manor Farm





Carbon Literacy Project



Leading the way in Carbon Literacy

The Carbon Literacy Project define Carbon Literacy as: the ability to understand, communicate about, and act on climate change in our daily lives.

It's about being equipped and empowered to deliver the best possible climate action, wherever you live, work or study.

A Carbon Literate Council

In February 2025, we demonstrated our commitment to Carbon Literacy by becoming a Carbon Literate Organisation at a Bronze level, and we are now working towards achieving silver level accreditation. To do this, we need to certify 30% of our work force, as well as show the impact of our pledged actions, and ripple out impact



into our community. So far, we have trained just over 100 staff members, so we are three quarters of the way toward our target, which has led to hundreds of pledges to reduce carbon.

Training opportunity for local organisations

We are also offering courses to a range of Horsham District organisations, including leaders in the community, Parish Councillors, and Small and Medium Enterprises (SMEs).

So far, we have trained around 30 people and are offering more community-based courses.

REGISTER TODAY 

If you are interested in taking a course, please get in touch with our Sustainability Team at: **ClimateChangeAction@horsham.gov.uk** to find out which course is most relevant for you and future dates.

DID YOU KNOW?

Priority Service Register



Joining your energy and water supplier's Priority Service Register means you'll be able to get a range of support when you need it, such as priority support in an emergency.

You can join if you have reached state pension age, are pregnant or have young children, are living with a disability or a long-term medical condition, as well as a number of other situations. Find out more at www.thepsr.co.uk or contact your energy or water supplier.

Southern Water



Southern Water offers support such as payment schemes, a hardship fund, and social tariffs for low-income households.

To find out more, visit: www.southernwater.co.uk/help-and-support.

Social tariffs



Social tariffs are cheaper for broadband and phone packages for people claiming Universal Credit, Pension Credit and some other benefits. Check if you, or someone you know, might be eligible at: www.ofcom.org.uk/phones-and-broadband/saving-money/social-tariffs.

Stay independent with our new wrist alarm

Our Community Link devices are designed to give peace of mind, helping people live safely and independently at home and when out and about.

We are pleased to introduce our latest wrist worn device. It offers discreet support wherever you are, along with a range of helpful features.

The new Mindme 4G wrist alarm

Compact, comfortable and stylish, this watch is an ideal everyday device. It shows the time and date, tracks steps and displays battery status. It also works as a wearable emergency button.

With a multi network SIM, the device connects to the strongest available mobile signal. It sends location updates to Mindme's secure platform every five minutes.

If you press the alarm button, you will be connected to our 24-hour monitoring centre. Our trained operators can speak with you, see your location and if needed, dispatch lifesaving support and alert your nominated emergency contacts.

Optional fall detection and medical sensors

You can activate extra features:

- If a fall is detected, the device can vibrate and display a message before calling the monitoring centre. This gives you time to cancel if it is a false alarm.
- Sensors can measure heart rate, blood pressure, temperature and blood oxygen and provide alerts via the app if they fall outside pre-set levels. The data can be exported to share with your health providers.

Adapts to your needs

The Mindme 4G wrist alarm can be set to alert family or care givers if the wearer enters or leaves set areas. This can be especially reassuring for people living with dementia who may find navigating unfamiliar places challenging.

Is this right for you?

This device is suitable for many people, including those who:

- Spend time alone or work alone
- Want extra reassurance when out and about
- Are at risk of falls
- Live with a health condition or disability
- Are living with dementia.

It is also a great option for lone workers who want added peace of mind.

Affordable, reliable and local

Community Link is a Horsham District Council service. Our team understands the challenges people face and is here to help.

We work with trusted partners to provide wider support. This includes working with West Sussex Fire & Rescue and with NHS services to support people returning home from hospital.

Whether you are thinking about your own needs or supporting a loved one, we are here to help make life safer and more reassuring.

FURTHER INFO



Visit: www.horsham.gov.uk/communitylink for more information about Community Link and the products we offer.

To talk through your needs with no pressure, call us on: **01403 215230**, or email us at: community.link@horsham.gov.uk.



Certified Organisation



Community Link

Does your new project need planning permission?

When thinking about starting a project on your home one of the first questions you might ask is: do I need planning permission?

Our new-look webpage is the perfect place to start. We have helpful tools to guide you through the process designed to answer some of the common queries you might have.

Understand what to expect with our online guide

The page includes an easy-to-follow online magazine packed with helpful guidance, such as:

- The different types of planning applications and when they're needed
- Other approvals you might require alongside planning permission
- How to apply and where to get advice
- Information on green energy options
- Common mistakes to avoid.

Use the PlanX tool

If you'd like a more tailored answer, try the PlanX tool, which provides personalised guidance.



After entering some basic details about your property, answering a series of simple questions PlanX will indicate whether your proposal is likely to need planning permission, or whether you might benefit from further pre-application advice before applying.

It's a quick and user-friendly way to sense-check your plans.

Expert advice before you apply

If you are still unsure if you require planning permission, or if you want extra reassurance, you can use our pre-application service.

This is a paid service, but it can be very helpful in avoiding costly mistakes or delays to your project.

ADVERTISEMENT

Could it be a SCAM?
Report it... Do not ignore it...

- STAY ALERT**
Do not share personal or financial information unless you are 100% sure who you are dealing with.
- CHECK BEFORE YOU CLICK**
Do not open attachments or click on suspicious links in texts or emails. Never assume - always verify.
- SPOT THE RED FLAGS**
Unsolicited calls, pressure to act quickly, or offers that seem too good to be true usually are.
- VERIFY CALLS AND EMAILS**
Contact companies directly using official contact details - never trust caller ID alone.
- TRUST YOUR INSTINCTS**
If something does not feel right, it is okay to say "no." Make decisions in your own time.

• Vulnerable victims of fraud can contact Sussex Police on **101** or textphone service **18001 101**.

• Always call **999** if you are in danger.

• If you have been a victim of a scam, report it at www.reportfraud.police.uk or call **0300 123 2040**.

With pre-application advice, you'll receive:

- An indication of whether your proposal is likely to be acceptable
- Identification of potential issues and how to address them
- Input from specialists (such as conservation or landscape experts, where relevant).
- The information required to be submitted with your planning application

Our pre-application planning advice covers all application types.

FIND OUT MORE

Scan the QR code and start your project at: www.horsham.gov.uk/planning/planning-applications/do-i-need-planning-permission.





Home improvements

Your guide from Sussex Building Control...

Whatever your project, most home improvements must meet the UK's Building Regulations. These are national standards set by Government to ensure building work is safe, energy efficient and built to last.

Sussex Building Control helps residents meet these standards. Our role is to support homeowners and professionals and ensure work is compliant. If your project requires a Building Regulations application, our surveyors will review your plans, carry out inspections and check work. A certificate is issued upon successful completion.

Here, we explain two common routes to getting your project signed off and what that means for you.

Building Notice application

Converting a garage is one of the most popular ways to maximise existing space. It's a great way to add value to your home.

But turning a garage into a comfortable, habitable room involves more than just decorating. In most cases, it will need to meet Building Regulations. As a homeowner, you're responsible for making sure your project is planned and carried out correctly. This includes choosing competent contractors.

Why Building Regulations matter

Garages are usually built to a lower standard than the rest of your home. To safely convert the space, upgrades are often needed for things like:

- Insulation and energy efficiency
- Damp proofing and ventilation
- Structural stability
- Fire safety.

This is where **Sussex Building Control** can support your project.

Typical inspection stages for a garage conversion may include:

- Start of work
- Foundation check (for any new walls)
- Floor insulation and damp proofing
- Structural elements (such as beams)
- Pre-plaster inspection
- Final completion check

Top tip: Always choose a competent contractor and make sure Building Regulations are considered early in your project.

Competent Person Scheme

For some types of home improvement work, you may not need to submit a Building Regulations application to Sussex Building Control at all. This is thanks to the Competent Person Scheme.

It allows certain registered tradespeople to self-certify that their work complies with Building Regulations.

This is an alternative route to submitting a Building Regulations application to us and applies to a range of specific trades, including for:

- Electrical installations
- Gas and heating systems
- Replacement windows and doors
- Some insulation and renewable energy systems.

The scheme is overseen by Government-approved bodies, ensuring ongoing compliance and consumer protection. For a full list of the types of works covered please visit: www.gov.uk/building-regulations-competent-person-schemes.

What this means for you

Using a registered installer can:

- Save time
- Reduce costs
- Provide peace of mind that work meets standards
- Give you certification needed for selling your home.

How it works

If your contractor is registered with a CPS scheme:

- They complete the work in line with regulations
- They notify their scheme provider
- You (and us) receive compliance certification, usually within 30 days.

It's important to keep your certificates safe as proof the work meets legal requirements.

Not sure which route applies?

If your contractor isn't registered with a Competent Person Scheme, you'll usually need to apply through **Sussex Building Control** instead.

HERE TO HELP



We support residents across Horsham District with a wide range of projects from small home improvements to major builds.

To submit an application, please visit: www.horsham.gov.uk/building-control. You can also explore homeowner-friendly guidance at: www.labcfroontdoor.co.uk.

Council's innovative podcast series wins major community award



We are celebrating national recognition after winning bronze in the Tourism and Leisure Award at the 21st Community Rail Awards, for our 'Arun Valley Line: Beyond the Rails' project.

A series of podcasts and short films highlight the unique character of the local area, showcasing attractions, walks and community activities that visitors can easily reach by train.

The award-winning project was delivered collaboratively by Horsham District Council, Southeast Communities Rail Partnership and Whistlestop Arts.

This national recognition reflects the success of the innovative series of podcasts and short films that showcase the unique character of our District. They highlight local attractions, walking routes and community activities that can be easily accessed by rail.

Supporting tourism and sustainable visits

The project promotes not only our visitor economy, but also the benefits of sustainable travel and the positive impact of exploring our local area, as well as enhancing the profile of our District at a national level.

Series Two now available

The first series, launched in 2025, focused on stations within the District including Horsham, Billingshurst, Pulborough and Amberley. Building on that success, a second series has now been delivered, extending coverage to additional locations and strengthening collaboration with partners including Arun District Council and Experience Sussex. A children's activity pack has also been developed, helping families engage with the railway and discover the area in an accessible and enjoyable way.

The Community Rail Awards received over 300 entries from across the country, making this recognition a significant achievement for all involved.



ADVERTISEMENT

**PARENT & CHILD
PARENT & TODDLER
CLASSES AVAILABLE**



FREE TRIAL LESSON

HORSHAM SWIM SCHOOL

Luxury private pool
Pool Heated to 33.6°
Swim England registered
Award winning swim school
Classes over seven days a week

info@horshamswimschool.co.uk
telephone: 07500 808898
www.horshamswimschool.co.uk

LISTEN IN



The podcast series, short films and activity pack can be accessed online at: www.whistlestoparts.org/aronvalley.

The Arun Valley Line: Beyond the Rails project is part-funded by the UK Government through the UK Shared Prosperity Fund.



Helping the community save money and natural resources



Our Community Climate Fund offers up to £5,000 for local community organisations to deliver new projects that reduce carbon emissions.

An added benefit of these climate friendly initiatives is that they often help organisations save money by easing the impact of rising or fluctuating bills, supporting them to continue delivering services on a more sustainable financial and environmental footing.

Here are just a few examples of recent successful projects:

Warnham Primary School

The school replaced nine push taps in pupils' toilets, which were frequently getting stuck on, with automatic sensor taps. Alongside saving water, the school has reduced its bills thanks to a 30% decrease in water usage.

They commented:

"No doubt money has been saved."

The project has also helped educate pupils about sustainable behaviour.



"No doubt money has been saved"

"It has the additional benefit of making the allotments affordable for the community"

Highwood Allotment Society

The society secured grant funding to install a rainwater harvesting system to support the growing of fruit and vegetables. Based on average rainfall and an assumed 85% efficiency rate, they estimate saving 25 thousand litres of metered water each year. This has significantly reduced one of the allotment's largest ongoing costs.

Allotment holder, Mr More said:

"The community climate fund grant from Horsham District Council will be critical in providing the ability to harvest water for the allotments. It has the additional benefit of making the allotments affordable for the community at a time when there are greater periods of drought and when piped water is subject to significant price inflation."

Henfield Youth Club

With support from the fund, the club installed solar panels. In just the first four months, they reported savings of £140 on energy bills by selling electricity back to the grid.

Above: Water harvesting at Highwood Allotment

Below: New taps at Warnham Primary School



The club told us:

"This grant will make a huge difference to us at the Henfield Youth Club. It will allow us to show our young people how we are making a difference to climate change and reduce our energy costs which will make a difference to their everyday lives."

"This grant will make a huge difference to us"

Be inspired

To find out more and explore other successful projects, visit: www.horsham.gov.uk/communityclimatefund. From community gardens and village halls to youth clubs, community fridges and sports facilities, there are plenty of ways this fund can help your organisation become more sustainable.

Opportunities to apply

The next round opens at the beginning of September.

GET IN TOUCH  

For advice and pre-application support, we recommend you contact our team on: **01403 215156** or via email at: communityclimatefund@horsham.gov.uk.



Connect to Work

West Sussex residents who face barriers to securing and sustaining work, such as those with long-term health conditions, disabilities or those from disadvantaged backgrounds, can get support to find a job with Connect to Work.

The programme, supported by the Council, which is funded by the Department for Work and Pensions, is voluntary and completely free to join. It offers personalised support from dedicated employment advisors.

Advisors will work closely with you to understand your strengths and ambitions, to create a tailored plan designed to help you find employment that suits your needs.

Support includes:

- Confidence building
- Job searching and applications
- Interview preparation
- Ongoing support to help individuals settle and progress in their roles.

The programme works in partnership with local employers, helping them meet their recruitment needs by matching them with skilled and diverse candidates, contributing to more inclusive and representative workforces.

For residents already in work but concerned about keeping their job, Connect to Work advisors support with identifying workplace adjustments to help them stay successfully in role.

By connecting local employers with motivated, work-ready individuals, the Connect to Work programme helps build a more inclusive workforce and supports the development of resilient and successful workplaces across West Sussex.

CONNECT TO WORK 

Find out more at: www.westsussex.gov.uk/connecttowork.

CONNECT TO WORK

Funded by UK Government



HORSHAM DISTRICT JOBS & SKILLS FAIR

Don't miss the Horsham District Jobs and Skills Fair 2026 – now midweek

The Horsham District Jobs and Skills Fair will return to Horsham's Drill Hall on **Wednesday 30 September 2026, 3.30pm to 7.30pm.**

Following feedback from previous years, we have moved the event from a Saturday to a Wednesday evening this year to make it even more accessible for jobseekers and businesses to attend.

Whether you are looking for paid work, voluntary work, apprenticeships or new training opportunities, the Jobs Fair will enable you to meet a broad range of local employers and organisations from a variety of different industries who will be showcasing what they have on offer.

YOUR OPPORTUNITY 

Find out more at: www.horsham.gov.uk/jobsfair.

www.horsham.gov.uk



Council careers – making a real difference



Above: Building Control work experience

Left: This year's cohort

Below: Students with dignitaries



Working for the Council can offer a varied and rewarding professional path, whether you are at the start of your career or an established expert.

From June this year we took a cohort of 40 local students for work experience placements. Officers helped them see the range of services we manage. Students spent time working with many teams including Building Control and Strategic Planning, Communities, Legal and Democratic Services, IT, Finance, Sustainability, Health and Wellbeing, and Recycling and Waste.

“ I also wanted to do something that would make a difference ”



They were able to experience first-hand jobs which have a positive impact on real people's lives within their own communities.

From work experience to the workplace

From our last cohort of work experience students, we are delighted that one participant has gone on to secure a permanent role with us.

Reflecting on her new role, Housing Services Assistant Ellie said:

“Being given the opportunity to do work experience with Horsham District Council a few years ago, I got a great insight into an office workspace. The environment was great, and the team culture was supportive, so when I saw the role in housing I knew not only that it would be a place I'd enjoy working, but I also wanted to do something that would make a difference.”

Our offer

Our teams deliver services to over 66,000 households. We provide community, health and wellbeing support, look after green spaces, leisure and arts facilities, and manage local democracy and elections.

We provide expertise on areas such as environmental health, sustainability, building control and planning, and contribute to the success of local businesses and our local voluntary sector. This all means we have a huge variety of opportunities both in front-facing roles and behind the scenes.

As an employer, we are inclusive and disability friendly. We offer flexible working practices, an environment where you are respected and where development opportunities are prioritised. We support staff to grow rewarding and impactful careers with training and development opportunities including degree apprenticeships and through graduate programmes.

The Local Government Graduate Programme

We take on graduates for the two-year 'Impact' programme for candidates looking to start a career in local government.

Current graduate placement participant Alice told us:

“The Impact scheme has given me the chance to work across a wide range of Council projects, from organising community events such as our Volunteer Awards to setting up an AI working group and supporting the project management of the Capitol Theatre refurbishment. I've really valued the variety of work and the support from mentors who are genuinely invested in your development.”

OUR VACANCIES



Get a regular round-up of current vacancies, plus skills and training opportunities directly into your inbox by signing up to our **Jobs & Current Vacancies** newsletter at: www.horsham.gov.uk/email-newsletters.

You can also find more at: www.horsham.gov.uk/jobs-and-careers. Click through to find out about working with us, including a link to a Q&A where some of our apprentices talk about their experiences.

Don't forget, you can meet our teams along with lots of other local employers at the **Horsham District Jobs and Skills Fair**.

Horsham District Councillors

Billingshurst

Cllr Sam Bateman
(Liberal Democrats)
sam.bateman@horsham.gov.uk

Cllr Mark Baynham
(Liberal Democrats)
Deputy Leader and Cabinet Member for Finance and Resources
mark.baynham@horsham.gov.uk

Cllr John Trollope
(Liberal Democrats)
john.trollope@horsham.gov.uk

Bramber, Upper Beeding and Woodmancote

Cllr Mike Croker (Green)
mike.croker@horsham.gov.uk

Cllr Roger Noel (Conservative)
Leader of the Opposition
roger.noel@horsham.gov.uk

Broadbridge Heath

Cllr James Brookes
(Liberal Democrats)
james.brookes@horsham.gov.uk

Cllr Jonathan Taylor
(Liberal Democrats)
Cabinet Member for Enterprise and Property
jonathan.taylor@horsham.gov.uk

Colgate and Rusper

Cllr Hannah Butler
(Liberal Democrats)
hannah.butler@horsham.gov.uk

Cllr Tony Hogben
(Reform UK)
tony.hogben@horsham.gov.uk

Cowfold, Shermanbury and West Grinstead

Cllr Joanne Knowles
(Liberal Democrats)
Chairman of the Council
joanne.knowles@horsham.gov.uk

Cllr Lynn Lambert
(Conservative)
lynn.lambert@horsham.gov.uk

Denne

Cllr Ruth Fletcher
(Liberal Democrats)
Cabinet Member for Planning and Infrastructure
ruth.fletcher@horsham.gov.uk

Cllr Cheryl Sweeney
(Conservative)
cheryl.sweeney@horsham.gov.uk

Cllr Clive Trott
(Liberal Democrats)
clive.trott@horsham.gov.uk

Forest

Cllr Colin Minto
(Liberal Democrats)
colin.minto@horsham.gov.uk

Cllr Jon Olson
(Liberal Democrats)
Cabinet Member for Performance, Customer Service & Communications
jon.olson@horsham.gov.uk

Cllr David Skipp
(Liberal Democrats)
Cabinet Member for Environmental Health, Recycling & Waste
david.skipp@horsham.gov.uk

Henfield

Cllr Gill Perry (Green)
Joint Leader of the Green Group
gill.perry@horsham.gov.uk

Cllr Josh Potts (Conservative)
josh.potts@horsham.gov.uk

Holbrook East

Cllr Nick Grant
(Liberal Democrats)
nick.grant@horsham.gov.uk

Cllr Warwick Hellawell
(Liberal Democrats)
warwick.hellawell@horsham.gov.uk

Holbrook West

Cllr Nigel Emery
(Liberal Democrats)
Vice Chairman of the Council
nigel.emery@horsham.gov.uk

Cllr Chris Franke
(Liberal Democrats)
chris.franke@horsham.gov.uk

Itchingfield, Slinfold and Warnham

Cllr Ross Dye (Conservative)
ross.dye@horsham.gov.uk

Cllr Tricia Youtan
(Conservative)
tricia.youtan@horsham.gov.uk

Nuthurst and Lower Beeding

Cllr Dennis Livingstone
(Liberal Democrats)
dennis.livingstone@horsham.gov.uk

Pulborough, Coldwaltham and Amberley

Cllr Jon Campbell (Green)
jon.campbell@horsham.gov.uk

Cllr Paul Clarke (Conservative)
paul.clarke@horsham.gov.uk

Cllr Len Ellis-Brown (Green)
len.ellis-brown@horsham.gov.uk

Roffey North

Cllr Tony Bevis
(Liberal Democrats)
tony.bevis@horsham.gov.uk

Cllr Belinda Walters
(Liberal Democrats)
Cabinet Member for Housing and Communities
belinda.walters@horsham.gov.uk

Roffey South

Cllr Jay Mercer
(Liberal Democrats)
jay.mercer@horsham.gov.uk

Cllr Sam Raby
(Liberal Democrats)
sam.raby@horsham.gov.uk

Rudgwick

Cllr Richard Landeryou
(Conservative)
richard.landeryou@horsham.gov.uk

Southwater North

Cllr Peter van der Borgh
(Liberal Democrats)
peter.vanderborgh@horsham.gov.uk

Cllr Claire Vickers
(Conservative)
claire.vickers@horsham.gov.uk

Southwater South and Shipley

Cllr Colette Blackburn
(Liberal Democrats)
Cabinet Member for Climate Action and Nature Recovery
colette.blackburn@horsham.gov.uk

Cllr Alexander Jeffery
(Liberal Democrats)
alex.jeffery@horsham.gov.uk

Steyning and Ashurst

Cllr Victoria Finnegan (Green)
Joint Leader of the Green Group
victoria.finnegan@horsham.gov.uk

Cllr Nicholas Marks (Green)
nicholas.marks@horsham.gov.uk

Storrington and Washington

Cllr Emma Beard (Green)
emma.beard@horsham.gov.uk

Cllr Claudia Fisher (Green)
claudia.fisher@horsham.gov.uk

Cllr Joan Grech (Green)
joan.grech@horsham.gov.uk

Trafalgar

Cllr Martin Boffey
(Liberal Democrats)
Leader of the Council
martin.boffey@horsham.gov.uk

Cllr Anthony Frankland
(Liberal Democrats)
Cabinet Member for Wellbeing, Culture & Green Spaces
anthony.frankland@horsham.gov.uk

West Chiltington, Thakeham and Ashington

Cllr Philip Circus
(Conservative)
philip.circus@horsham.gov.uk

Cllr Joy Dennis (Conservative)
joy.dennis@horsham.gov.uk

Cllr Alan Manton
(Independent)
alan.manton@horsham.gov.uk

Disclaimer: Contents of this magazine were correct at the time of going to print. Full details of councillors including phone numbers can be found at: www.horsham.gov.uk/councillors.

Contact us



Go online

Make our website your first place to check for all sorts of useful information about our services.



www.horsham.gov.uk

You'll find links to our latest news, support, services, events information and much more. You can also use our self-service forms to:

- **Make payments** – are you looking to sign up for a service or pay the Council? You can do it online, anytime.
- **Complete an application** – from a parking permit, to planning permission, accessing grants or to join the housing register, you can apply online.
- **Report** – if you have spotted a problem such as fly tipping or a damaged bin, let us know.

Email or call us

Community Link

community.link@horsham.gov.uk
01403 215230

Electoral Services

elections@horsham.gov.uk
01403 215581

Enterprise

business.support@horsham.gov.uk
01403 215279

Environmental Health

ehl@horsham.gov.uk
01403 215641

Licensing

licensing@horsham.gov.uk
01403 215407

Housing

Homeless enquiries
housing@horsham.gov.uk

Housing application enquiries
housing.applications@horsham.gov.uk
01403 215204

National Benefit Fraud Hotline
0800 854 4400

Council Tax, business rates and benefits
01403 337800

www.horsham.gov.uk/council-tax-benefits

Parking

parking@horsham.gov.uk
01403 215057

Planning Services

Development management and general enquiries
planning@horsham.gov.uk
01403 215186

Building Control

General enquiries and helpline
building.control@horsham.gov.uk
01403 215151

Leisure Facilities

Billingshurst Leisure Centre
01403 787500

Blackbridge Community Centre
www.horsham.gov.uk/community/rooms-for-hire

Horsham Museum & Art Gallery
01403 254959
www.horshammuseum.org

Horsham Park Barn bookings
contact@thecapitolhorsham.com
01403 750220

Rookwood Golf Course
01403 252123

Southwater Country Park
01403 731218

Steyning Sports and Swimming Centre
01903 879666

The Capitol, Horsham
01403 750220
www.thecapitolhorsham.com

The Bridge Leisure Centre
01403 211311

The Pavilions In The Park
01403 219200

Warnham Local Nature Reserve
01403 256890

Recycling and Bins

Including trade waste, garden waste, cleansing and dog fouling
customer.services@horsham.gov.uk
01403 733144

Food waste
01403 739448

For all other general enquiries

01403 215100

Get our app

Use our mobile app to help make accessing our services on the move even easier.



Receive notifications for your bin collections, search for what can and can't be recycled, find your nearest recycling site, and more.



Horsham
District
Council

EVENTS IN HORSHAM DISTRICT

Discover what's on at:
www.horsham.gov.uk/events

