

Our District



Horsham
District
Council


News from Horsham District Council
November 2023

**Third birthday of
our Community
Climate Fund**
.....

**Christmas events
across the District**
.....

**The Council Plan –
a fresh vision for
Horsham District**

 Follow us on Instagram @HorshamDC

 Find us on Facebook/HorshamDC

Could you give the gift of a childhood?

Every child deserves a safe and loving home. Become a foster carer with WSCC and receive up to £28.5k a year (per child), plus comprehensive training and ongoing professional support

Want more information?

Scan the QR code to book onto an information session, call **0330 222 7775** or visit **fosteringwestsussex.org.uk**



THE BELOVED BOOK SERIES LIVE ON STAGE



MON 12 - THU 15 FEB thecapitolhorsham.com



Welcome to winter in Our District



The autumn has been a really productive time for making plans and focussing on council priorities.

I am proud to share with you our new Council Plan – 'A fresh vision for

Horsham District' (page 8). This outlines what we want to achieve over the next four years.

As we head towards the New Year we are celebrating Horsham District as a great place to live with good jobs, homes, accessible countryside and affordable fun.

In this edition we showcase festive things to do for all the family, many of them free of charge. We are sharing some fantastic climate and nature friendly initiatives and we mark milestones for our Community Lottery and Climate Fund. We have also highlighted our Health and Wellbeing services, grants to keep your home warm, and where you can find more cost of living support.

With my very best wishes for you and your families this Christmas and New Year.

Councillor Martin Boffey
Leader of the Council



8



16



22

GET IN TOUCH



Send us your feedback on this edition by emailing us at communications@horsham.gov.uk

Cover image: Winter salad planting at Rock Farm. See page 12 for the full article.

@HorshamDC

Enjoy the festive season in Horsham District	2
Discover Horsham Museum this winter	4
Welcome to our Horsham Wellbeing Hub	5
Horsham Shopmobility	5
Live Well in Horsham District	6
Simplify your accounts online	6
Keeping warm this winter	7
The Council Plan	8
Horsham Park pond area is now open for all to enjoy	9
Are you looking to improve your home?	10
Help is at hand with the Mindme Wrist Alarm	11
Community Climate Fund	12
Happy Birthday to our Community Lottery	14
The Chairman's Charity	15
Wilder Horsham District volunteers	16
Repair, reuse, and recycle your way to a sustainable Christmas	18
New Business Training Programme launched	20
Resources and advice to help you find a job	20
Shaping our Climate Action Strategy	21
Our HOTBIN winners get composting	22
A cleaner sweep for Horsham	22
Coffee lovers in Horsham District reach recycling milestone	23
Bin collections over Christmas and New Year	23
Horsham District Councillors	24
Contact us	25
We're hiring!	25

Enjoy the festive season in Horsham District

With everything from a fantastic array of local food and drinks, artisan gifts to festive entertainment and events, the magic of the season is right on your doorstep.

Make the most of our free festive events

We will have an evening not to be missed on 24 November with our fantastic panto cast performing in Horsham's Carfax along with great shopping opportunities and delicious food.

Check out www.horsham.gov.uk/christmas for full listings including festive acts, seasonal activities, and traditional carolling.

Marvel at magical displays

Look out for fantastic Christmas windows and displays when you visit Horsham District high streets and you could win a great prize for your family!

You will find details of our Christmas displays competition on our social media pages and each business taking part will display a special window sticker or sign that they are part of the Council's 'Buy Local Gift Happy' campaign.

Get involved at: www.horsham.gov.uk/buylocal.

Find the best of arts and culture on your doorstep

We have a dazzling Christmas line up at The Capitol including our panto Beauty and the Beast starring John Partridge, as well as The Gingerbread Boy for our younger theatregoers. Don't forget to check out our New Year shows to kick-start your 2024 in style. One highlight will be the fantastic There's a Monster in Your Show – based on Tom Fletcher's wonderful interactive adventure books.

Find out about all the shows on offer at: www.thecapitolhorsham.com/whats-on.

Don't forget Horsham Museum & Art Gallery is packed full of fascinating collections, free to visit and open Tuesday to Saturday, 10am to 4pm. We are open until 23 December, and then reopening for 2024 on 2 January. Read about our new children's gallery, the A-Z of History on page 4 (opening on 16 December) and check out: www.horshammuseum.org/events, for details of our events, free children's trails and crafts running from 19 to 22 December.

Make a visit part of your family's seasonal tradition and absorb local history at our beautifully decorated museum in the heart of Horsham.

Absorb the festive market scene

Nothing feels more Christmassy than enjoying a mulled wine in a beautiful buzzing market town and choosing perfect gifts from artisan traders.

With markets in Billingshurst, Henfield, Horsham, Pulborough, Steyning and Storrington there is always something to discover. You can find details on market events on our website at: www.horsham.gov.uk/christmas.



Sample local food and drink with Sussex Six
Sussex Six helps you to find the best of

local produce in food businesses across the District. Look out for the logo on shops, restaurants, pubs, and cafés where you will find at least six great locally sourced products.

We have been working in collaboration with Natural Partnerships CIC to deliver Sussex Six as part of our Plate Up Local initiative. This project is part-funded by the UK Government through the UK Shared Prosperity Fund.

Visit: www.sussexfoodanddrink.org/sussex-six-campaign.

CHRISTMAS
Magic Displays
COMPETITION



LEVELLING
UP



UK Government

The Christmas Challenge Trail



Spark imaginations on our AR kids trails

Have some free festive fun this Christmas by taking part in a new interactive digital trail in each of our high streets. Find 10 festive-themed illustrated characters in your local town centre and use the QR code displayed to 'meet' them. Each has a festive challenge for you and a prize. Choose what happens in the story and see the characters come to life in 'Augmented Reality' (AR).

The trails have been commissioned by the Council, delivered by geo-gaming platform High Street Safari, and managed by local community partners. Select your location and complete the trail by going to: www.highstreetsafari.com/trails.

Our parks have so much to offer on a crisp wintry day

Explore our green spaces from woodlands to waterways, sports facilities and play parks. There is so much for all ages. Discover what you can see and do here: www.horsham.gov.uk/parks-and-countryside.

Enjoy wildlife

Warnham Local Nature Reserve is just one of our great green spaces across the District to catch up with wildlife. The Reserve is closed on Christmas Day and Boxing Day but open to enjoy the rest of the Christmas holidays. The Friends of Warnham Local Nature Reserve are running a number of festive events including wreath making. Find out more at www.horsham.gov.uk/warnhamlnr.

Walk or cycle your way into 2024

Blow out the cobwebs with our free walking routes (www.horsham.gov.uk/walks), heritage trails (www.horshammuseum.org/heritagetrails) and cycle rides for all abilities (www.horsham.gov.uk/bikerides).

Join us for a Wellbeing Walk

Our popular Wellbeing Walks take place across the District and are free, sociable, and family-friendly. Our walk programme is published monthly on our website at: www.horsham.gov.uk/sport-and-leisure/walking/wellbeing-walks.

Get into Volleyball

Our Sports Development team have been helping to establish a new mixed adult volleyball club. Redstars Horsham Volleyball Club train on Tuesday evenings at The Forest School in Horsham and play matches on a Sunday afternoon. Further information can be found at www.horsham.gov.uk/sport-and-leisure/sports-sessions.

Community activities

Don't forget to look out on our Neighbourhood Wardens Facebook page to find brilliant board games and fantastic community group events.



Discover Horsham Museum this winter

Located on Horsham's beautiful Causeway, the Museum offers a changing programme of galleries, activities, and events.

Horsham Now

Visit our newest gallery to find out more about Horsham District from the mid 20th century until today. The displays explore the contribution of Horsham's residents to film, tv and literature and how the town has transformed in recent years. The gallery's centrepiece is a display which uncovers the complex processes of bringing video games to life. The UK's largest gaming studio, Creative Assembly, is based in Horsham and has lent many tools of the trade including motion capture suits and equipment, to show the craft behind each game.

A-Z of History

Opening on Saturday 16 December, our A-Z of History gallery is a fun take on Horsham District's past. The gallery will be filled with toys and games and feature key stories from Horsham's bygone days. Our new children's activity booklet launches too, designed to guide and occupy younger audiences whilst they explore the Museum.



Events

Join us on Friday 15 December for a cosy and festive evening at the Museum. Enjoy the decorated galleries accompanied by the sound of Christmas carols and get a sneak preview of the A-Z of History gallery. Book onto a workshop to create your own corn dolly tree decoration or browse our selection of gifts and souvenirs in the shop. The Museum will be lighting its Causeway Advent Street window this evening too so you

can continue your visit with a stroll down the Causeway to enjoy the festive scenes. The Museum will be open until 8pm and entry is free.

FURTHER INFO



The Museum is open Tuesday to Saturday, 10am to 4pm. We will be closed Christmas Eve until 2 January 2024.

For full details please visit:
www.horshammuseum.org.

Welcome to our Horsham Wellbeing Hub



Our Horsham Wellbeing Hub opened in Swan Walk Shopping Centre this July. Offering a friendly service, visitors can access all sorts of support free of charge.

Advisors can help with:

- Stopping smoking
- Reducing your alcohol intake
- Healthy eating and weight management
- Prediabetes and high Cholesterol
- Getting active
- Wellbeing checks (full body MOTs and NHS Health Checks)
- Wellbeing support for workplaces
- Access and information on local services offering more support.

The Hub has confidential consultation rooms as well as a bright modern studio space for friendly group classes. It is open Monday, Tuesday, Thursday and Friday 9am to 4.30pm and Wednesdays 1pm to 5pm. Evening appointments are available on request.

Meet Paul

He recently completed a weight management course and had this to say about his experience:



“This was a fantastic course”

“The course helped me to understand food combinations. I have started jogging and after 12 weeks have lost over a stone. My back pain is reduced, I am sleeping better, my stress feels more manageable and generally I look happier. This was a fantastic course delivered by a knowledgeable, friendly, and experienced advisor.”

Wellbeing on the road

As well as operating from our Horsham Wellbeing Hub, the team offer their services and courses right across the District. You can find what's on offer by health topic or check out the calendar of courses here: www.horsham.westsussexwellbeing.org.uk/events.

Accessing our services

As well as dropping in for a chat, you can call the team on **01403 215111**, email: info@horshamdistrictwellbeing.gov.uk or find a simple self-referral form on our website at: www.horsham.gov.uk/community/health-and-wellbeing.

The Horsham Wellbeing Hub has been made possible through funding from the District Council and an additional one-off contribution of £45,000 from UK Government through the Shared Prosperity Fund. This operates as part of the wider Health and Wellbeing service funded by West Sussex County Council's Public Health service.

Horsham Shopmobility – helping you get around town

To help anyone, young or old, who has problems walking we have a fantastic Shopmobility service based in Swan Walk Shopping Centre.

Our range of powered scooters and powered and manual wheelchairs are there to give people greater independence and access to the shopping areas and leisure facilities. The service is free to use. It is funded by Horsham District Council and donations from users.

If our Shopmobility service would help you get to the Horsham Wellbeing Hub or would be useful to help you get around the town centre you can find more information at: www.horsham.gov.uk/parking/shopmobility.

If you have any questions, please call Parking Services on **01403 215057** or email parking@horsham.gov.uk.

Community Transport

If getting there is proving to be a barrier to taking part in activities or accessing key services, do take a look at local community transport schemes which provide accessible and supported travel for residents who have difficulty accessing the mainstream networks.

We have links to a selection of local schemes on our webpage here: www.horsham.gov.uk/community/community-transport.





Our Community Services team with some of our partners offering various support services

Live Well in Horsham District

If you are looking for support over the winter months, we are here to make sure you can find the help you need.

Whether you are trying to find organisations who can help you with money worries, housing, your health and wellbeing or rising bills, we have collated lots of places that are there for you on our website at: www.horsham.gov.uk/community/cost-of-living-support.

The Council made an extra £1.1million of funding available dedicated to cost of living support for the 2023/24 financial year.



Helping those that need it most

We have invested in new software to help us to understand with greater accuracy and detail the living and financial situations of our residents. This will help us identify where our support is most needed and enable us to directly contact and offer targeted help for people or groups who may be struggling. To start with we are especially looking at families or individuals who may not be accessing existing support that they could be eligible for.

One area we are currently focusing on is Pension Credit. Did you know that if you are over State Pension age and on a low income, you could be entitled to extra weekly money. Please visit www.gov.uk/pension-credit or call the free Pension Credit helpline on **0800 991 234** to check if you are eligible.



Simplify your council accounts online

If you register for our self-service portal, you can manage your Council Tax, Council Tax Support, Housing Benefit, Business Rates and Landlord payment accounts all in one place. Simply create your account to get started.

Save time with Direct Debit and help us to run more efficiently.

You can register to pay Council Tax or Business Rates by Direct Debit. Once you're set up, secure and convenient payments are taken automatically.

FURTHER INFO



For further information and to find all the links you need to sign up the portal please visit: www.horsham.gov.uk/council-tax-and-benefits.

www.horsham.gov.uk

Keeping warm this winter

With colder months coming, some residents may be worried about heating costs.

The Council is working with its partners to help people improve the energy efficiency of their homes to help keep energy bills lower.

We are pleased to support schemes to help low-income households improve the energy efficiency of their homes to reduce costs and carbon emissions.

Warmer Homes Scheme

This scheme offers funding for homes using oil, LPG or electricity for heating systems. If you also have a household income of under £31,000 and your home has an energy rating of D or below, you could qualify for up to £25,000 grant funding. Energy ratings can be checked at www.gov.uk/find-energy-certificate.

Through the Warmer Homes project, grant funding is available for energy improvements like insulation, solar panels and air source heat pumps.

Warmer homes grants are available for homeowners and tenants who rent from a private landlord (a landlord contribution is required).

You can apply online at www.warmerhomes.org.uk or by telephone on **0800 038 5737**.

ECO4

The Government's new ECO4 scheme will be going live soon to help homeowners and private tenants with energy saving measures such as insulation and renewable technologies. ECO4 can also provide grant funding to people with specific medical conditions whose health is affected by living in a cold home. Retrofit surveyors will suggest suitable measures. ECO4 is available to qualifying owner occupiers and tenants who rent from a private landlord. Further details are available at www.horsham.gov.uk/climate-and-environment/energy-saving.

The new Great British Insulation Scheme will also be launched nationally later this year; keep an eye on our website for details.



Warm Home Discount

This scheme offers £150 credit to your electricity bill. Households receiving Pension Credit Guarantee element should receive this automatically. Low-income households receiving qualifying benefits can apply direct to their energy company. If you live in a park home you will need to apply through <https://charisgrants.com/partners/park-homes>. The Warm Home Discount is different from the winter fuel payments available to all people of pensionable age.

Boiler Upgrade Scheme

The Boiler Upgrade Scheme offers grant funding to help people with the cost of replacing oil, gas or electric systems with a heat pump or biomass boiler. Homeowners will need to obtain quotes from certified installers. Further details are available at www.gov.uk/apply-boiler-upgrade-scheme.

Further support

The West Sussex Citizens Advice Home Energy helpline can be contacted on **01243 974063**, help and advice is also available from the Local Energy Advice Partnership **0800 060 7567** or www.applyforleap.org.uk.

Be scam aware

Please be cautious if you receive cold-calls or unsolicited telephone calls offering free insulation.



The Council Plan – a fresh vision for Horsham District

Our new Council Plan, which was adopted in October, identifies our key priorities and drives our focus for the next four years.

It addresses the man-made climate change emergency, the ongoing impact of the cost of living crisis for residents, maintaining and building a thriving local economy and moving forward with more sharing and more community involvement.



© Toby Phillips Photography

Supporting people and communities



Our District is a great place to live and everyone deserves to benefit. We'll provide help in tough times and build communities where people can flourish and have fun.

Inspiring greener futures



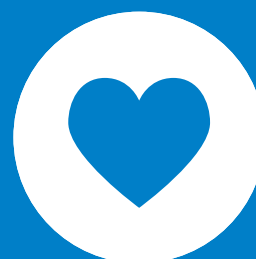
We aim to be a net zero council by 2030 and a net zero district by 2050. Horsham District will be held in high regard for best practice in rewilding, regenerative farming and recycling.

Building a thriving local economy



Our District will be known as an easy place to do business. We'll work to overcome challenges and keep our high streets thriving, both in Horsham town and across the District.

Always listening, learning and improving



We're stronger when we work together. That means more sharing and more community involvement. Local democracy has to mean more than just an election every four years.

Alongside our Council Plan we will publish an Annual Plan each February. This will set out our actions for the next 12-months. The Annual Plan will be prepared together with our annual budget and Council Tax arrangements.

FURTHER INFORMATION



You will find the documents on our website here: www.horsham.gov.uk/councilplan.

www.horsham.gov.uk

Horsham Park pond area is now open for all to enjoy

The last part of our programme of improvements to Horsham Park's much loved pond area was completed in the summer.

The project included relandscaping the pond edge and improving accessibility with a gently sloping path onto a flat area to view the pond, along with a new information board and refurbished and relocated seating.

A haven for nature

The area now benefits from new gates and fencing including 'hedgehog highways' which allow safe passage for hedgehogs to pass freely through the area.

Grasses and wildflowers have been introduced into the beds either side of the path to further improve the habitat around the pond.

Essential work has been undertaken to de-silt the pond, which is a regular requirement to maintain water quality and storage capacity. In addition, necessary repairs to the sluice have been completed.

During the works the Council was mindful to create minimal disturbance to habitats for birds and wildlife, and specialist aquatic consultant advice was sought to manage fish, balancing stocks by re-homing healthy native varieties to benefit water quality and biodiversity.

Love our ducks

We know that lots of people like to feed the ducks on the pond, even though there is plenty of food available naturally. Bread is a popular choice, but it is not very nutritious and any left uneaten can encourage green algae and attract rodents. If you wanted to bring a tasty treat for the ducks, grapes, sweetcorn, lettuce, peas, oats, or seeds are healthy foods for them.

This project was partly funded through Section 106 contributions from local developments.



ADVERTISEMENT

Chestnut Tree House
LOTTERY

Only £1 per play

Don't miss your chance to... **Win £1,000 every week!**

Play Now
01903 871842
www.chestnut.org.uk/district
18+ | GB residents only | T&Cs apply
Registered Charity No. 256789

Are you looking to improve your home?



As we settle into wintry evenings indoors you may be planning some changes that would make your home perfect for your family.

Your local authority building control service (LABC), known as Sussex Building Control plays a key role in helping you make improvements to your house and creates dream homes by providing information and guidance to homeowners and technical advice to architects and builders throughout the project.

Familiarity with the local area, combined with detailed expert knowledge and practical experience mean that we give you the reassurance that your project will comply with building regulations standards.

Here to help you

Our goal is to ensure buildings are safe, accessible and energy efficient. At the end of your project, we give you the completion certificate you need to sell your home or building. We're impartial and independent - we're here to protect you and your project.

Strong local partnerships

Sussex Building Control works with you, alongside architects and professionals in construction, to provide the regulatory building control service you can trust.

We partner with local architects and builders, some of these relationships span over 20 years and regularly win awards at the LABC Building Excellence Awards - the largest business to business awards in the building control sector in the UK.

When do you need us?

Building regulations apply whether you are self-building, renovating, or extending. In fact, most construction work, even fairly minor alterations to your home will require building regulations compliance of some kind.

If you're changing an existing building or building something new, you may need building control approval.

What our clients say

"Local Authority Building Control helped us solve problems quickly and cost-effectively. There was a slight delay onsite while we searched for a solution that didn't add thousands of pounds to the job, but the consultation from Sussex

Building Control was included in their original fee and their knowledge and expertise was invaluable."

"We found our surveyor professional and always approachable. We can't speak highly enough of them. As a customer I was impressed that they came out so quickly and it was reassuring to be able to call them directly throughout our project."

Architect and builder feedback

"We've had a really good working relationship with the team for over 15 years and get on well with their common-sense approach to the Regulations".

"We rely on Sussex Building Control to inspect our work. We value the feedback they give us because this helps us improve our service and workmanship."

CONTACT US



If you are planning a new extension, conversion, or other type of home improvement then please contact Sussex Building Control. You can find more information and contact details on our website at: www.horsham.gov.uk/building-control.

Their knowledge and expertise was invaluable





**Activate
the alarm
to relay your
location to our
24hr Receiving
Centre**

Help is at hand with the Mindme Wrist Alarm

New to the suite of Community Link products, which help our residents with independent living, we are pleased to showcase the Mindme Wrist Alarm.

The slick design looks just like a smart watch, but this clever little device is hiding a number of features to help you live with a little extra peace of mind. As well as showing the time, date, battery status and a step counter, it records your precise location. You also have a discreet panic button to alert our 24hr Alarm Receiving Centre and allow you to speak to an operator which ensures help is always at hand if you need it.

Is it the device for me?

As well as for anyone lone working, wanting extra security out and about, or living with any conditions that might be eased by having help at the touch of a button, the Mindme Wrist Alarm is a great device for young people, those with disabilities or to help support people living with dementia.

Practical support for carers

Carers can securely look up the location of a user on Mindme's website at any time. In an emergency they can also call our Receiving Centre directly where operators are trained to understand the challenges of caring for anyone with additional needs.

You can establish up to three 'geofences', which are virtual perimeter areas. If a wearer passes into an unfamiliar area a nominated carer can be alerted by text message and email.

How it works

A combination of the latest GPRS technology and a multi-network SIM ensures that the device will always stay connected anywhere a mobile network exists. The wrist alarm will update its location around every four minutes.

Activating the alarm on the device will relay your location to our 24hr Receiving Centre. An operator will answer your call and you can speak to them directly. Your details and location, together with next of kin and emergency contact details will appear on their monitor.

Charging the Mindme Wrist Alarm is very easy with no fiddly connections, simply pop it on its magnetic dock. We recommend that you charge it overnight, but if you forget it can last for up to five days use without a charge and can be recharged in only two hours.

FURTHER INFO



You can find more information on the full range of Community Link products at: www.horsham.gov.uk/communitylink.

If you have any questions, please speak to our trained team members who can recommend the best device for your current needs on **01403 215230** or email us at community.link@horsham.gov.uk.



Community Climate Fund – seeding a sustainable future



Rock Farm is a six-acre working market garden, community space and horticultural therapy project near Washington, operated by One Church Brighton.

The site champions climate friendly food production and uses innovative energy and nature conservation strategies, as well as providing healthy food,

education opportunities and practical therapy for local people.

One Church Brighton has received two lots of funding from our Community Climate Fund for Rock Farm. Initially they were awarded a contribution towards creating an outdoor space for their carbon-negative farming project, with a specialist focus on including marginalised members of the community.

A new training offer

Their latest successful funding bid will establish two courses, to be run on site, for groups comprising primarily of Horsham District residents.

These programmes aim to educate participants on nature friendly and carbon-negative horticulture, equipping them with the skills to apply the methods at home.

For unemployed or underemployed individuals, there will be the opportunity to undertake a six-

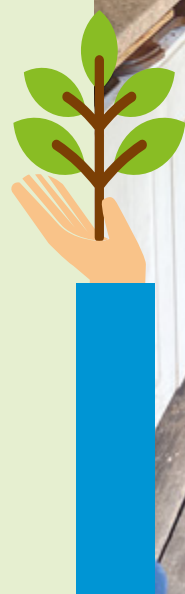
month programme with the outcome of a recognised qualification and skills to pursue outdoor work.

Rock Farm Project Development Manager Ben Szobody commented:

“The Community Climate Fund grant programme has helped Rock Farm grow into a hugely valuable resource and leader in carbon-negative horticulture locally, engaging more than 600 people per year.



“ **The grant has helped us grow into a leader in carbon-negative horticulture locally, engaging more than 600 people per year** ”





Has this project inspired you?

The Community Climate Fund is a grant of up to £5,000 available for local voluntary or community groups undertaking new climate positive projects.

Your project must deliver a lasting impact on the wider community and inspire positive climate action.

Groups such as schools, community organisations, sports clubs and centres, scouts, guides and faith groups delivering inclusive projects can apply.

Your organisation can apply once a year, providing it is for a new project in each application.

The first 2024 round of funding opens on 2 January and closes 11 February.

MORE INFO



Please visit www.horsham.gov.uk/communityclimatefund to find out more. We recommend that you discuss your application with a Sustainability Officer before applying. Please call **01403 215156** or email communityclimatefund@horsham.gov.uk.

Three years of the CCF!

This October marked the third anniversary of the Community Climate Fund grant scheme.

Since the launch we have awarded a total of **£134,683**. This has funded **42 successful projects** and a further eight were transferred to the Nature Recovery Award scheme.

Grants have enabled projects such as rainwater harvesting, community gardens, solar PV panel installation and LED lighting, innovative recycling and repair schemes, a community fridge, installing bicycle racks and bike maintenance classes.

"We often have people referred to us, some of whom have learning disabilities. For them, these courses could provide the pathway to a viable outdoor career.

"We have become a hub for student groups requesting places on residencies with us to train in our methods and many of our local volunteers have expressed an interest in further learning opportunities. In addition, through our networks with local regenerative farms and agricultural colleges we have identified a lack of training opportunities in this emerging approach to food production and a real need to create employment pathways into this sector of the local agricultural economy.

"With the help of the Council's Community Climate Fund we can move to address these needs, empowering local people with training at the forefront of innovative and thoughtful horticulture."

HORSHAM DISTRICT
**COMMUNITY
LOTTERY**

make good things happen!

Your chance to

**WIN
£500
FOR YOUR
CAUSE**

Happy Birthday to our Community Lottery

**Horsham District
Community Lottery is now
four years old. To celebrate
it is giving local charities
and good causes the
chance to win £500 for
their organisations.**

New organisations can sign up,
and if live by 8 December are eligible
to be entered into the prize draw.
Existing lottery organisations will
be automatically entered.

Get a lottery page for your cause

Any local not-for-profit or charity
organisation can sign up to take
part online. Groups can complete a
simple online form, and once we've
checked everything over, we'll set
you up with your own customisable
lottery page. Find out more at: www.horshamdistrictcommunitylottery.co.uk/news/win-500-cash-for-your-cause.

As well as the chance of winning
the £500, our lottery organisations
get regular monthly payments for
their ticket sales, their own public
fundraising webpage and marketing
support. With no set-up fees or
ongoing admin costs, it's a great
way to raise money for your cause.

How do I play?

Tickets are just £1 each, with
60p in each pound going to a great
local cause.

Simply sign up, choose your cause
and get the chance to win the
£25,000 jackpot every week!

Who will you support?

Everyone buying a ticket can choose
which community group they want
to support. There are many different
types of organisations from sports
clubs, school associations and
amateur dramatic societies, to local
environmental groups, community
projects and those helping vulnerable
people in our community.

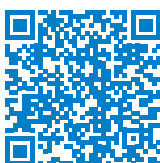
Find your cause and start playing
here: www.horshamdistrictcommunitylottery.co.uk/support/find-a-good-cause.



Supported by



**Horsham
District
Council**



Supporters
must be 18
years or over

www.horsham.gov.uk

The Chairman's charity

Councillor David Skipp is Horsham District Council's Chairman for the civic year 2023-24.

The Chairman has several duties, including leading full Council meetings and acting as the official representative of Horsham District Council on civic and ceremonial occasions and events, as well as attending community events to help raise their profile.

His chosen charity for this civic year is The Olive Tree Cancer Support Group. The charity has recently opened a new hub located in Lavinia House, Dukes Square, Horsham.

The centre gives anyone affected by cancer, from right across the District, access to a range of services. The charity provides information, counselling, complementary therapies and support groups for patients, and their carers and families right from diagnosis to navigating life post treatment. David has chosen this charity because as a retired Horsham GP this vital service to improve lives for local people is close to his heart. They are one of the great local causes that you can support through our Community Lottery.

To find out more about The Olive Tree, please visit www.olivetreecancersupport.org.uk and why not head to their Christmas Bazaar on 24 November 3pm to 6pm.



David with members of The Olive Tree team

You can find out more about the work of the Chairman at: www.horsham.gov.uk/charman.

Our Chairman attends many local events. If you have a charity, community group, business launch, or run a service for the residents of the District and have an event that you would like David to attend please do contact chairman@horsham.gov.uk.

ADVERTISEMENT



carewise

WEST SUSSEX | Care Funding Advice

Expert advice on paying for care

Long-term care in your own home or in a residential care home is expensive, but with expert advice from independent financial specialists, Carewise can help you to make informed decisions on choosing and paying for the right care.

The Carewise care fees specialists are regulated by the Financial Conduct Authority and members of the Society of Later Life Advisers, so you can have peace of mind when discussing your finances.

Contact Carewise to find out how you could benefit.

 carewiseadvice.com |  carewise@westsussex.gov.uk |  0330 222 7000



“ Our
volunteers
are amazing.
We can't thank
all 76 of them
enough! ”

Our team of
volunteers at
Dyke Farm

Wilder Horsham District volunteers – a force for good

Wilder Horsham District is a five-year partnership between the Council and Sussex Wildlife Trust working to deliver a nature recovery network.

A nature recovery network takes advantage of areas of thriving biodiversity, or those with that potential, and aims to improve and link them, creating flourishing corridors for native plants and wildlife.

Working closely with local communities and landowners, the partnership aims to reverse the decline in species and habitats and enrich the natural environment for all residents and visitors. Through our wonderful volunteer workforce, we have been able to hugely increase the scale and impact of our work in Horsham District.

Work party volunteering

Our team of volunteers help us carry out vital conservation tasks on privately or publicly owned land. The work is varied, sessions have involved tasks such as seeding and maintaining wildflower meadows, clearing invasive species, creating ponds, building leaky dams, and improving hedgerows.



Sussex
Wildlife Trust



Horsham
District
Council



Volunteer removing Himalayan Balsam

“It’s great to come back and see the work we have done



Astrid with a successful leaky dam

Tackling a green space invader

We caught up with a group at Dyke Farm (near Pulborough) who were tackling Himalayan Balsam, an invasive non-native species. The plant (a relative of the Busy Lizzie) grows incredibly quickly and smothers native vegetation. With explosive seed cases it can spread widely but the plant itself only lives for a year and its seeds are only viable for two years, so physically clearing it before it sets seed can eradicate it in an area in just a few seasons. But this is challenging and requires great effort. Every plant produces thousands of seeds, if you miss just one, it can very quickly reseed and re-establish, which is why it is such a problem.

Wilder Horsham District started Himalayan Balsam removal at this site in 2022 and returned this year as part of a wider effort with other conservation groups in the area (including Sussex Wildlife Trust’s Storrington and Arun Valley group, and Horsham Green Gym) to tackle the problem along the Upper Arun River. Other work at the site has included hedging and building leaky dams to slow the flow of water.

Some of the volunteers had worked the site at earlier sessions, they commented that:

“It’s great to come back and see the work we have done and build on it.”

Astrid, who was joining the group for the first time said:

“I have done other volunteering, this really appealed to me as the sessions were easily accessible, varied and it seems a really friendly group.”

Landowner, Nicola said:

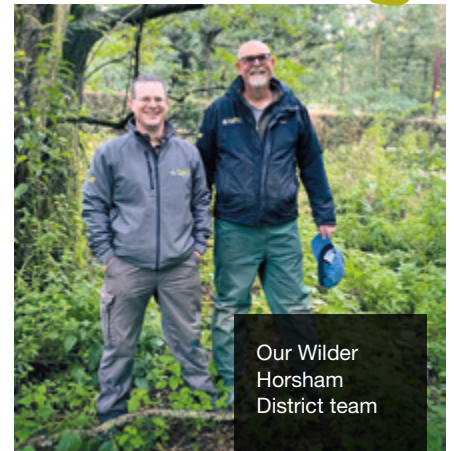
“Wilder Horsham District are great; we have ambitious plans at the site and are keen to share with others what has been done and what is possible.

“We have worked with our neighbours getting permission to extend the work, so the positive action is extending to a larger reach.”

Our Wilder Horsham District team described the impact of the volunteer support:

“Our volunteers are amazing. Their hard work equates to an in-kind contribution of around £14,900 for just under two years, which is incredible. We could never complete the volume of work we do without them - our volunteers significantly multiply the on-the-ground impact the project is able to have, and so are an essential and invaluable part of delivering a Nature Recovery Network in Horsham District.

“We can’t thank all 76 of them enough!”



Our Wilder Horsham District team

GET INVOLVED



How do I become a volunteer?

If anyone is interested in volunteering, we’d love to welcome them into the team. No experience necessary! Simply reach out to swtvolunteering@sussexwt.org.uk to find out more and sign up.

A message to landowners

If you are a landowner, land manager or community group in Horsham District and interested in helping wildlife and habitats to recover on your land, we’d love to hear from you too. Please complete the Landowner Contact Form at: www.sussexwildlifetrust.org.uk/landownerenquiry on the Sussex Wildlife Trust website so we can see how we can support you.

To find out more about Wilder Horsham District please visit: www.horsham.gov.uk/wilderhorshamdistrict.





“ **Repair cafés are great at giving some extra life to items that you use around your household** ”

Repair, reuse, and recycle your way to a sustainable Christmas

We are all often looking for ways to reduce waste and the amount we spend.

It is important for our pockets and our impact on the climate. Reusing existing materials and products for as long as possible supports a sustainable circular economy in the District.

Don't ditch it, fix it

Have you got Christmas lights that aren't fully working, or a toy, garment, or appliance that could have a new lease of life with a bit of expertise - why not try using your local repair café?

The concept of the Repair Café is a global movement to help people be more sustainable and reduce the amount of things that might be discarded.

As Robin Johnson, from Greener Steyning says:

“Repair cafés are great at giving some extra life to items that you use around your household. Why replace them when you could extend their life and save the cost. This is especially important around Christmas which is an expensive time of the year.”

We have nine repair cafés throughout Horsham District, some of which have received a grant from the Council's Community Climate Fund to assist them in their start up.

Each repair café runs slightly differently, so please check how they operate before your visit.



“ **Why replace them when you could extend their life and save the cost** ”

Make the most of a re-use shop

For items with plenty of life that you are no longer using West Sussex County Council have a re-use shop at the Billingshurst Recycling Centre to save homewares, bikes, and furniture from going to waste.

Recycle

Cardboard packaging, Christmas cards, and plastic trays can all be recycled in your blue-top bin, but please remember to rip up large pieces of cardboard as these can cause your recycling to become stuck in the bin.

Plastic film, bubble wrap and polystyrene packaging cannot be accepted in your blue-top bins for recycling.

Do the scrunch test

Avoid foil or glittery wrapping paper. If you can scrunch it and it springs back it contains plastic and can't be recycled in your blue-top bin.

What about those harder to recycle materials?

There are many single-use plastic items that we use every day like toothbrushes, confectionery wrappers and make up that can't be recycled by the Council. Local community group Sussex Green Living has partnered with Terracycle to recycle many single use plastics including crisp packets. There are community recycling collection points across Horsham District for these and many other products.

Many local supermarkets have facilities to drop off soft plastics such as plastic bags, bread bags and other wrapping. We have a link to a Recycling Locator tool from Recycle Now on our website to help you find your nearest participating stores.

Use your recycling centre

Your local recycling centre can take items including spectacles, hard plastics, paint, saucepans, tools,

light bulbs and household hazardous chemicals such as cleaning products.

FURTHER INFO

You can find links to details of recycling schemes, repair cafés, terracycle drop off points and the Billingshurst Re-Use Shop here: www.horsham.gov.uk/waste-recycling-and-bins/recycling/community-recycling-schemes.



ADVERTISEMENT



**Parent & Baby / Toddler / Childrens (4+)
swimming lessons, open 7 days a week.**



- Small classes
- Private luxury pool
- Qualified instructors
- Swim England registered
- CRB/DBS Checked Instructors
- Warm Pool - 34 Degrees
- 1 to 3 staff ratio for beginner lessons.
- Holiday intensive courses available



www.horshamswimschool.co.uk
Email: info@horshamswimschool.co.uk
Telephone: 07500 808898 | 07497 647220



ADVERTISEMENT



Tools Wanted

Do you have unwanted carpentry or engineering tools
in your shed, garage, or workshop?

I'll purchase all hand tools and workshop equipment you no longer use or require.

CALL NIGEL ON 01903 816600

Other items of interest: old books, postcards, model toys inc. Dinky & Corgi, watch & clock-making equipment, automobilia, military items, cameras, etc. If it's an entire collection or just a couple of bits, please contact me.

**ALL tools
considered**



New Business Training Programme launched



To date, over 100 businesses have been supported by the Council's Business Training Programme.

We have now launched even more free skills training for independent business owners.

The exciting series of business training workshops use a blend of online and in-person formats, providing skills development and enhanced opportunities to share and learn from the latest best practice. Courses cover a range of topics including social media, accountancy, videography and more!



Also featured is a five-minute online quiz, where businesses can test how effective they are at sales and negotiation.

The three-year programme (2023-25) seeks to help entrepreneurs and business leaders in the District build resilience into their business models, keep them well informed and enable opportunities for upskilling.

Course content is delivered by locally based independent business experts in their fields.

This project is part-funded by UK Government through the UK Shared Prosperity Fund.

FURTHER INFO



Find out more at:
www.horsham.gov.uk/btp



Above: Local expert delivering Business Training Programme

LEVELLING
UP



UK Government



Jobs & Skills
Fair 2023

Resources and advice to help you find a job

From January 2024, keep an eye out on the Council website for a new webpage: www.horsham.gov.uk/jobs-and-careers.

This will give local job hunters links to useful resources and advice to help find their next role.



Please subscribe to our 'Jobs and current vacancies' fortnightly round-up to hear the latest news at: www.horsham.gov.uk/email-newsletters.

www.horsham.gov.uk

Shaping our Climate Action Strategy

We want to thank residents for completing our climate action survey – we had over 750 responses.

The survey asked residents about what climate actions they feel are most important, what they are already doing, or would consider doing with more support.

Your responses, along with other engagement will help us finalise our Climate Action Strategy and make sure it includes what matters most.

The final strategy will include a 10-year action plan for the Council, our key partners, local businesses and the wider community.

Survey Headlines

Over the coming weeks we will be analysing the results and comments.

Key priority areas across our categories that you ranked as most important included:

- Renewable and low carbon energy use for buildings
- Increased local public transport options for greener travel
- More recycling and reducing our waste
- Wildlife friendly projects
- Supporting Parish and Neighbourhood Councils and community group initiatives

Actions at home

It was encouraging to see that many people are already taking action. Respondents were already

doing around 80% of the actions we had listed in the survey. A large number of you are reducing energy consumption, water usage and household waste. Many of you are also making eco-friendly and ethical choices when shopping, creating wildlife-friendly and more climate resilient gardens, and choosing more sustainable travel options.

Respondents primarily identified that the main challenge to them continuing their climate journey was affordability.

Find out more

You can find out more on our website at: www.horsham.gov.uk/climateactionstrategy.

Keep in touch

To stay up to date sign up for our Climate Action email newsletter at www.horsham.gov.uk/email-newsletters. If you have any questions, please contact: climatechangeaction@horsham.gov.uk.



ADVERTISEMENT

Looking for extra support with your day to day living?



The Connect to Support website is for anyone in West Sussex who is looking for additional help or support to maintain their independence.



westsussexconnecttosupport.org

Visit our website to:

- **DISCOVER** tips on improving your health and wellbeing
- **VIEW** equipment to help you stay independent
- **FIND** support for carers
- **LEARN** about options for extra care and support

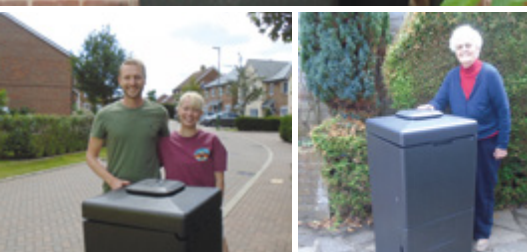
Do you need help to use the website? Email: socialcare@westsussex.gov.uk or phone: 01243 642121



HOTBIN®
composting

Our HOTBIN winners get composting

To celebrate the launch of our subsidised HOTBIN food composter offer for residents, we gave you the chance to win one of six HOTBINs worth almost £300.



Our winners shared their top tips to reduce food waste to enter our prize draw.

Some of their great tips included:

- Using up leftover ingredients to create rainbow stirfrys and risottos or cooking them up into tasty potato cakes
- Getting children involved in cooking their own food
- Keeping bread in the fridge for freshness and turning ends of loaves into breadcrumbs to save waste
- Using coffee grounds on the garden
- Freezing herbs so you always have them at hand for cooking
- Cooking down fruit that's getting past its best to make delicious compotes.

Why recycling is great

Some 41.5% of our average waste bin is made up of food waste. However, up to 70% of that waste can be avoided. By finding ways to reduce our food waste, composting, or sharing our surplus food, we can save money, save the environment, and support our communities too.

Go greener at home

If you missed out on the competition, Horsham District residents can still purchase a HOTBIN with a 10% discount or bag a discounted compost bin through West Sussex County Council and 'Get Composting'.

FURTHER INFO



For more information please visit:
www.horsham.gov.uk/composting.

A cleaner sweep for Horsham's streets



This summer we introduced our first all-electric street sweepers to Horsham Town Centre.

The new sweepers improve air quality and reduce noise.

Reducing air pollution

Replacing the old diesel sweepers with electric power, the new street sweepers deliver a reduction in carbon emissions in line with the Council's priority to be net zero by 2030.

Reducing noise pollution

The electric sweepers are much quieter which is valuable given the early starts worked by our street cleansing crews who keep the streets looking their best.

Two highway sweepers have also been refurbished to run on hydro-treated vegetable oil, a carbon-saving fuel which reduces carbon emissions.

These vehicles represent another step forward in our vision for a cleaner Horsham District. Upgrades like this will help us achieve a green, thriving and carbon neutral area.



Coffee lovers in Horsham District reach recycling milestone



In January 2023 we partnered with Podback to launch a free collection service for residents to recycle their used coffee pods from home.

The service has proved to be a great success with over half a million pods collected and recycled in the first six months of operation.

By recycling we reduce waste and give materials a second life. Once collected from the kerbside, the coffee pods are taken to specialist aluminium and plastics reprocessing plants in the UK.

The plastic and aluminium are transformed into new products, including beverage cans, car components or plastic garden furniture and building products. The coffee grounds are used to create soil improver and renewable energy (biogas).

BOOK TODAY



Please visit **www.horsham.gov.uk/recycling** to find out more about the coffee pod collection scheme, including information on booking a collection.

Bin collections in Horsham District over Christmas and New Year



What you need to know

There will be no collections on Christmas Day and Boxing Day.

Our Waste Collection team will be working on Saturday 30 December, in addition to working additional Saturdays on 6 January and 13 January to catch up. Collections will be back to the normal schedule by week commencing 15 January.

Garden waste collections will be suspended over the festive period from week commencing 25 December and will resume on Tuesday 9 January.

Your collections calendar

Householders can view and download their own personalised collections calendar on our website at: **www.horsham.gov.uk/waste-recycling-and-bins**.

If you require assistance to view the online personalised collections calendar, please ask a family member or you can request a printed version via our Customer Contact Centre by calling **01403 733144**.

We will empty all dog bins and litter bins throughout the District during the Christmas week.

Thanks to our residents recycling efforts, the Horsham District has achieved a recycling rate of 53% but we can always do more to recycle and reduce waste!

Horsham District Councillors

Billingshurst

Cllr Sam Bateman

(Liberal Democrats)
sam.bateman@horsham.gov.uk

Cllr Mark Baynham

(Liberal Democrats)
Cabinet Member for Finance and Resources
mark.baynham@horsham.gov.uk

Cllr John Trollope

(Liberal Democrats)
john.trollope@horsham.gov.uk

Bramber, Upper Beeding and Woodmancote

Cllr Mike Croker (Green)

Leader of the Green Group
mike.croker@horsham.gov.uk

Cllr Roger Noel (Conservative)

roger.noel@horsham.gov.uk

Broadbridge Heath

Cllr James Brookes

(Liberal Democrats)
james.brookes@horsham.gov.uk

Cllr Jonathan Taylor

(Liberal Democrats)
jonathan.taylor@horsham.gov.uk

Colgate and Ruspur

Cllr Tony Hogben

(Conservative)
tony.hogben@horsham.gov.uk

Cllr Liz Kitchen (Conservative)

elizabeth.kitchen@horsham.gov.uk

Cowfold, Shermanbury and West Grinstead

Cllr Joanne Knowles

(Liberal Democrats)
joanne.knowles@horsham.gov.uk

Cllr Lynn Lambert

(Conservative)
lynn.lambert@horsham.gov.uk

Denne

Cllr Ruth Fletcher

(Liberal Democrats)
Cabinet Member for Local Economy and Place
ruth.fletcher@horsham.gov.uk

Cllr John Milne

(Liberal Democrats)
Deputy Leader and Cabinet Member for Planning and Infrastructure
john.milne@horsham.gov.uk

Cllr Clive Trott

(Liberal Democrats)
clive.trott@horsham.gov.uk

Forest

Cllr Colin Minto

(Liberal Democrats)
colin.minto@horsham.gov.uk

Cllr Jon Olson

(Liberal Democrats)
Cabinet Member for Leisure, Culture and Green Spaces
jon.olson@horsham.gov.uk

Cllr David Skipp

(Liberal Democrats)
Chairman of the Council
david.skipp@horsham.gov.uk

Henfield

Cllr Malcolm Eastwood

(Independent)
malcolm.eastwood@horsham.gov.uk

Cllr Josh Potts (Conservative)

josh.potts@horsham.gov.uk

Holbrook East

Cllr Nick Grant

(Liberal Democrats)
nick.grant@horsham.gov.uk

Cllr Warwick Hellawell

(Liberal Democrats)
warwick.hellawell@horsham.gov.uk

Holbrook West

Cllr Nigel Emery

(Liberal Democrats)
Vice Chairman of the Council
nigel.emery@horsham.gov.uk

Cllr Chris Franke

(Liberal Democrats)
chris.franke@horsham.gov.uk

Itchingfield, Slinfold and Warnham

Cllr Kasia Greenwood

(Liberal Democrats)
kasia.greenwood@horsham.gov.uk

Cllr Tricia Youtan

(Conservative)
tricia.youtan@horsham.gov.uk

Nuthurst and Lower Beeding

Cllr Dennis Livingstone

(Liberal Democrats)
dennis.livingstone@horsham.gov.uk

Pulborough, Coldwaltham and Amberley

Cllr Jon Campbell (Green)

jon.campbell@horsham.gov.uk

Cllr Paul Clarke (Conservative)

paul.clarke@horsham.gov.uk

Cllr Len Ellis-Brown (Green)

len.ellis-brown@horsham.gov.uk

Roffey North

Cllr Tony Bevis

(Liberal Democrats)
tony.bevis@horsham.gov.uk

Cllr Belinda Walters

(Liberal Democrats)
belinda.walters@horsham.gov.uk

Roffey South

Cllr Jay Mercer

(Liberal Democrats)
Cabinet Member for Environmental Health, Recycling and Waste
jay.mercer@horsham.gov.uk

Cllr Sam Raby

(Liberal Democrats)
Cabinet Member for Housing, Communities and Wellbeing
sam.raby@horsham.gov.uk

Rudgwick

Cllr Richard Landeryou

(Conservative)
richard.landeryou@horsham.gov.uk

Southwater North

Cllr Peter van der Borgh

(Liberal Democrats)
peter.vanderborgh@horsham.gov.uk

Cllr Mike Wood

(Liberal Democrats)
mike.wood@horsham.gov.uk

Southwater South and Shipley

Cllr Colette Blackburn

(Liberal Democrats)
Cabinet Member for Climate Action and Nature Recovery
colette.blackburn@horsham.gov.uk

Cllr Alexander Jeffery

(Liberal Democrats)
alex.jeffery@horsham.gov.uk

Steyning and Ashurst

Cllr Victoria Finnegan (Green)

victoria.finnegan@horsham.gov.uk

Cllr Nicholas Marks (Green)

nicholas.marks@horsham.gov.uk

Storrington and Washington

Cllr Emma Beard (Green)

emma.beard@horsham.gov.uk

Cllr Claudia Fisher (Green)

claudia.fisher@horsham.gov.uk

Cllr Joan Grech (Green)

joan.grech@horsham.gov.uk

Trafalgar

Cllr Martin Boffey

(Liberal Democrats)
Leader of the Council
martin.boffey@horsham.gov.uk

Cllr Anthony Frankland

(Liberal Democrats)
anthony.frankland@horsham.gov.uk

West Chiltington, Thakeham and Ashington

Cllr Philip Circus

(Conservative)
Leader of the Opposition
philip.circus@horsham.gov.uk

Cllr Joy Dennis (Conservative)

joy.dennis@horsham.gov.uk

Cllr Alan Manton

(Conservative)
alan.manton@horsham.gov.uk

Disclaimer: Contents of this magazine were correct at the time of going to print. Full details of councillors including phone numbers can be found at: www.horsham.gov.uk/councillors.

Contact us

Community Link

01403 215230

Economic Development

businessdevelopment@horsham.gov.uk

Employment Support Service

Journey2work@horsham.gov.uk
01403 215334

Electoral Services

elections@horsham.gov.uk
01403 215126

Environmental Health

publichealth.licensing@horsham.gov.uk
01403 215641

Leisure facilities

Billingshurst Leisure Centre
01403 787500

Blackbridge Community Centre
www.horsham.gov.uk/community/rooms-for-hire/blackbridge-community-centre

Steyning Sports and Swimming Centre

01903 879666

The Bridge Leisure Centre
01403 211311

The Pavilions In The Park
01403 219200

The Capitol, Horsham
01403 750220
www.thecapitolhorsham.com

Horsham Drill Hall
01403 211436

Horsham Park Barn bookings
contact@thecapitolhorsham.com
01403 750220

Horsham Museum & Art Gallery
01403 254959
www.horshammuseum.org

Rookwood Golf Course
01403 252123

Southwater Country Park
01403 731218

Warnham Local Nature Reserve
01403 256890

Licensing

licensing@horsham.gov.uk
01403 215407

Housing

Homeless enquiries
housing@horsham.gov.uk

Housing application enquiries
housing.applications@horsham.gov.uk

01403 215204

National Benefit Fraud Hotline
0800 854 4400

Council Tax, business rates and benefits
08081 648610

Parking

parking@horsham.gov.uk
01403 215379

Planning Services

Development Management
General enquiries
planning@horsham.gov.uk
01403 215187

Building Control

General enquiries and helpline
building.control@horsham.gov.uk
01403 215151

Recycling and Bins

Including trade waste, litter, garden waste, cleansing and dog fouling
yoursay@horsham.gov.uk
01403 733144

For all other general enquiries
01403 215100

Stay Connected

Sign up to receive updates on topics that are important to you at www.horsham.gov.uk/stayconnected



We're hiring!

We have an exciting variety of roles on offer for individuals from all backgrounds who care about their local community.

We have a great personal development ethos and a supportive working environment.

We would love to hear from you.



Never miss an opportunity

Scan the QR code to sign up to job alerts

Current Vacancies

For more information and details on our current vacancies, please visit: www.horsham.gov.uk/jobs-and-careers.



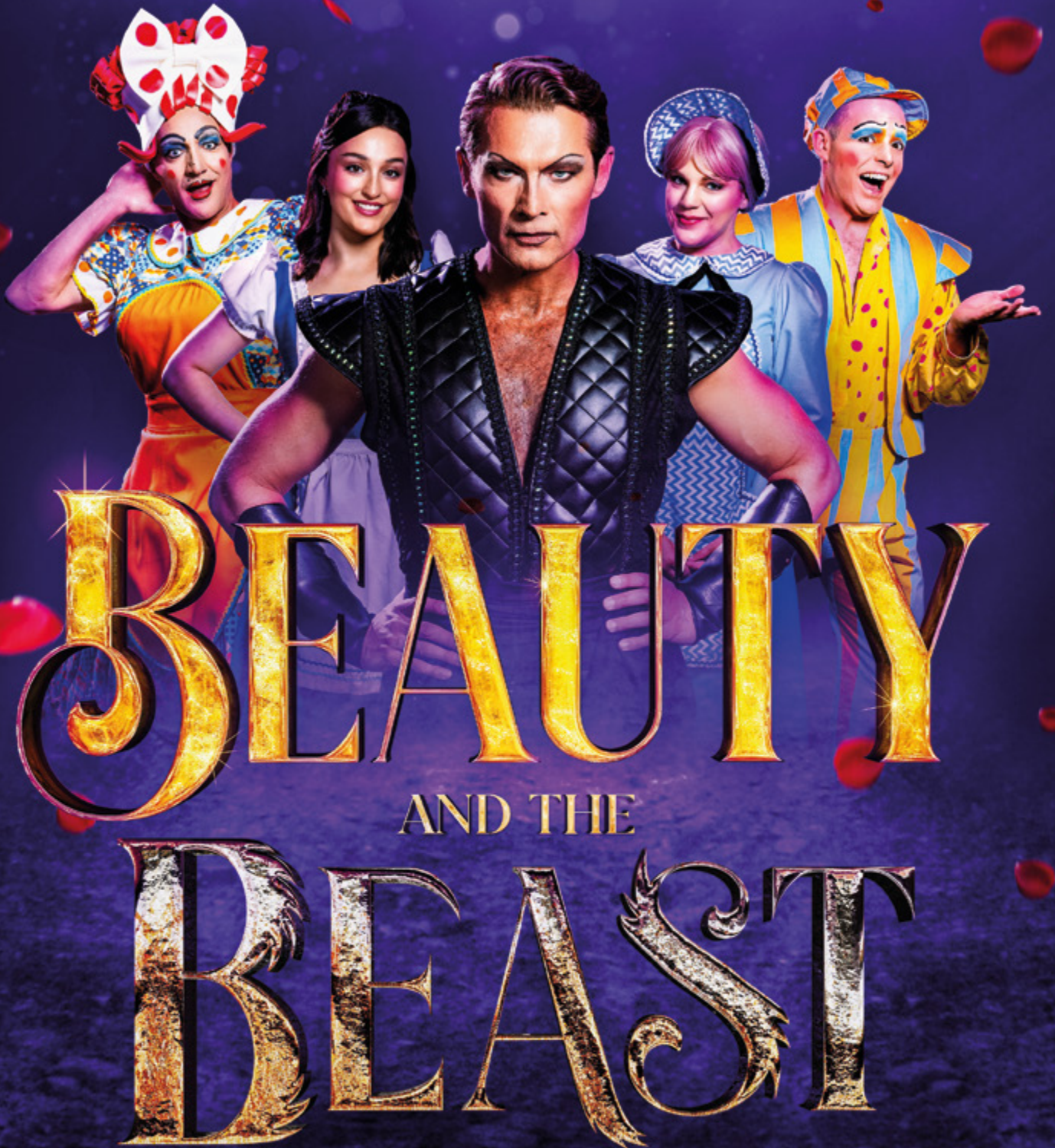
Employer
Recognition
Scheme

SILVER AWARD 2018



A CAPITOL PRODUCTION

A Tale as Old as Pantomime



STARRING
JOHN PARTRIDGE

1 – 31 DECEMBER 2023

thecapitolhorsham.com

The Capitol
HORSHAM



Horsham
District
Council